

Product datasheet

Anti-CaMK2 beta gamma delta (phospho T287) antibody ab182647

[8 References](#) [8 Images](#)

Overview

Product name	Anti-CaMK2 beta gamma delta (phospho T287) antibody
Description	Rabbit polyclonal to CaMK2 beta gamma delta (phospho T287)
Host species	Rabbit
Tested applications	Suitable for: IHC-P, ICC/IF, WB
Species reactivity	Reacts with: Mouse, Rat, Human
Immunogen	Synthetic peptide corresponding to Human CaMK2 beta gamma delta (phospho T287) conjugated to Keyhole Limpet Haemocyanin (KLH). Peptide sequence around phosphorylation site of Threonine 287 (Q-E-T(p)-V-E) derived from Human CaMK2 beta gamma delta. Swiss-Prot#: Q13554/Q13555/Q13557. Database link: NP_001211.3
Positive control	WB: Rat brain lysate, human 22RV1 cells Immunohistochemistry: Human-liver-cancer tissue, Rat testis tissue, mouse testis tissue Immunocytochemistry: Human lung tissue, rat lung tissue
General notes	<p>The Life Science industry has been in the grips of a reproducibility crisis for a number of years. Abcam is leading the way in addressing this with our range of recombinant monoclonal antibodies and knockout edited cell lines for gold-standard validation. Please check that this product meets your needs before purchasing.</p> <p>If you have any questions, special requirements or concerns, please send us an inquiry and/or contact our Support team ahead of purchase. Recommended alternatives for this product can be found below, along with publications, customer reviews and Q&As</p>

Properties

Form	Liquid
Storage instructions	Shipped at 4°C. Store at +4°C short term (1-2 weeks). Upon delivery aliquot. Store at -20°C long term. Avoid freeze / thaw cycle.
Storage buffer	<p>pH: 7.40</p> <p>Preservative: 0.02% Sodium azide</p> <p>Constituents: 49% PBS, 0.88% Sodium chloride, 50% Glycerol</p> <p>PBS (without Mg²⁺ and Ca²⁺)</p>

Purity	Immunogen affinity purified
Purification notes	ab182647 was purified by affinity-chromatography using epitope-specific phosphopeptide. Non-phospho specific antibodies were removed by chromatography using non-phosphopeptide.
Clonality	Polyclonal
Isotype	IgG

Applications

The Abpromise guarantee Our **Abpromise guarantee** covers the use of ab182647 in the following tested applications. The application notes include recommended starting dilutions; optimal dilutions/concentrations should be determined by the end user.

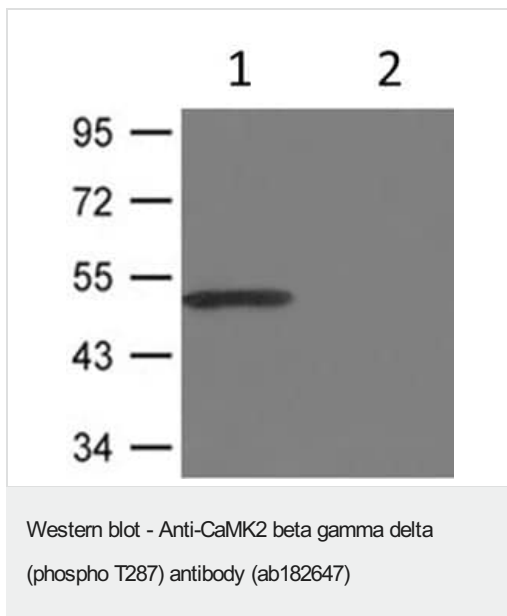
Application	Abreviews	Notes
IHC-P		1/200.
ICC/IF		1/200.
WB		1/500. Predicted molecular weight: 50 kDa.

Target

Relevance The product of this gene belongs to the serine/threonine protein kinase family and to the Ca(2+)/calmodulin-dependent protein kinase subfamily. Calcium signaling is crucial for several aspects of plasticity at glutamatergic synapses. In mammalian cells, the enzyme is composed of four different chains: alpha, beta, gamma, and delta. It is possible that distinct isoforms of this chain have different cellular localizations and interact differently with calmodulin. Eight transcript variants encoding eight distinct isoforms have been identified for this gene.

Cellular localization Cytoplasmic and Nuclear

Images

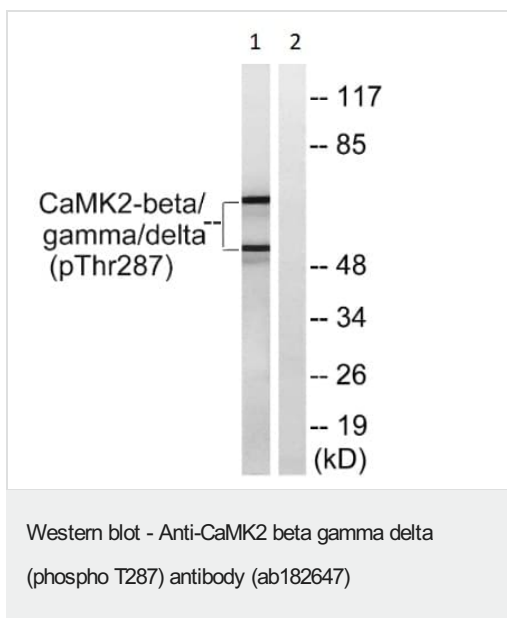


All lanes : Anti-CaMK2 beta gamma delta (phospho T287) antibody (ab182647) at 1/500 dilution

Lane 1 : Rat brain lysate.

Lane 2 : Rat brain lysate with antigen-specific peptide

Predicted band size: 50 kDa

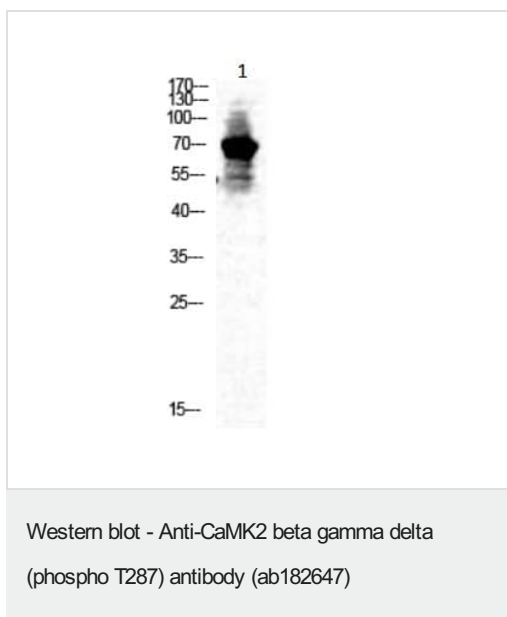


All lanes : Anti-CaMK2 beta gamma delta (phospho T287) antibody (ab182647)

Lane 1 : Rat Brain

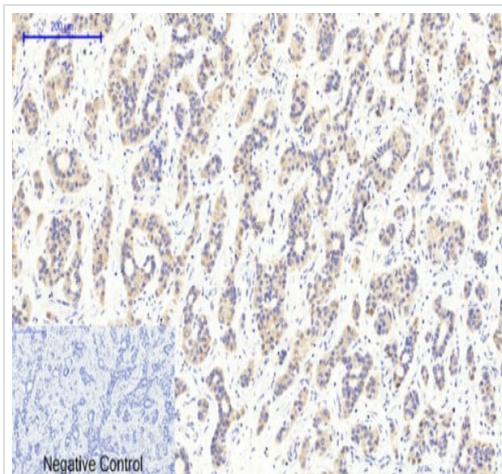
Lane 2 : Rat brain blocked with phospho peptide

Predicted band size: 50 kDa



Anti-CaMK2 beta gamma delta (phospho T287) antibody (ab182647) at 1/500 dilution + Human 22RV1 cells

Predicted band size: 50 kDa



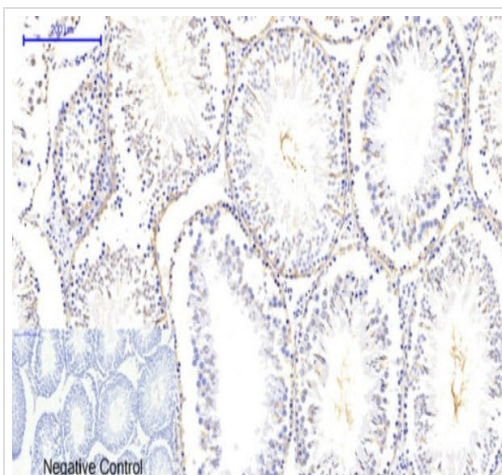
Immunohistochemistry (Formalin/PFA-fixed paraffin-embedded sections) - Anti-CaMK2 beta gamma delta (phospho T287) antibody (ab182647)

Immunohistochemical analysis of paraffin-embedded human liver cancer tissue labelling CaMK2 beta gamma delta (phospho T287) with ab182647 at 1/200 and incubated overnight at 4°C followed by a secondary antibody diluted at 1/200, incubated at RT for 30 minutes.

Negative control: no staining on human live cancer tissue.

Negative control: Secondary antibody only.

Heat mediated antigen retrieval was performed with Citrate buffer (pH 6.0) for 20 minutes.

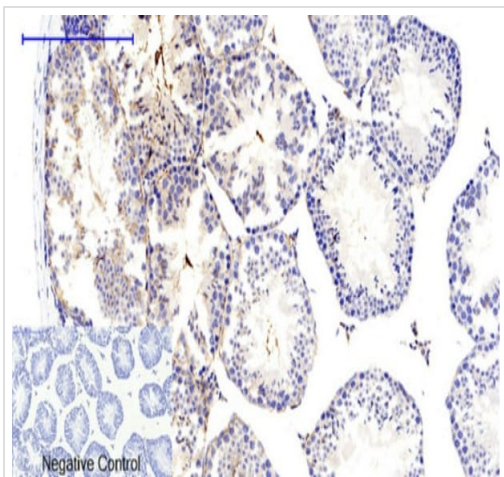


Immunohistochemistry (Formalin/PFA-fixed paraffin-embedded sections) - Anti-CaMK2 beta gamma delta (phospho T287) antibody (ab182647)

Immunohistochemical analysis of paraffin-embedded Rat testis tissue labelling CaMK2 beta gamma delta (phospho T287) with ab182647 at 1/200 and incubated overnight at 4°C followed by a secondary antibody diluted at 1/200, incubated at RT for 30 minutes. Negative control: no staining on Rat-testis tissue.

Negative control: Secondary antibody only.

Heat mediated antigen retrieval was performed with Citrate buffer (pH 6.0) for 20 minutes.

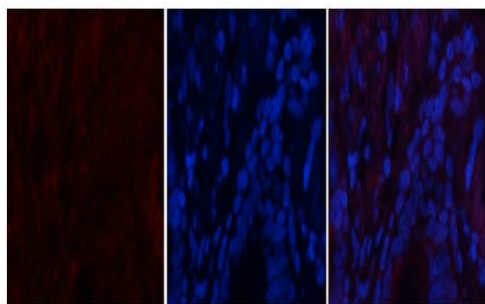


Immunohistochemistry (Formalin/PFA-fixed paraffin-embedded sections) - Anti-CaMK2 beta gamma delta (phospho T287) antibody (ab182647)

Immunohistochemical analysis of paraffin-embedded Mouse testis tissue labelling CaMK2 beta gamma delta (phospho T287) with ab182647 at 1/200 and incubated overnight at 4°C followed by a secondary antibody diluted at 1/200, incubated at RT for 30 minutes. Negative control: no staining on Rat-testis tissue.

Negative control: Secondary antibody only.

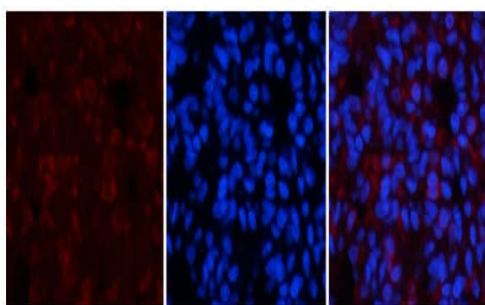
Heat mediated antigen retrieval was performed with Citrate buffer (pH 6.0) for 20 minutes.



Immunocytochemistry/ Immunofluorescence - Anti-CaMK2 beta gamma delta (phospho T287) antibody (ab182647)

Immunofluorescent analysis of human lung tissue labelling CaMK2 beta gamma delta (phospho T287) with ab182647 at 1/200 dilution, followed by Cy3 labelled secondary antibody 1/300. The Nuclear counterstain was DAPI (Blue).

Left: ab182647, **Middle:** DAPI, **Right:** Merged



Immunocytochemistry/ Immunofluorescence - Anti-CaMK2 beta gamma delta (phospho T287) antibody (ab182647)

Immunofluorescent analysis of rat lung tissue labelling CaMK2 beta gamma delta (phospho T287) with ab182647 at 1/200 dilution, followed by Cy3 labelled secondary antibody 1/300. The Nuclear counterstain was DAPI (Blue). **Left:** ab182647, **Middle:** DAPI, **Right:** Merged

Please note: All products are "FOR RESEARCH USE ONLY. NOT FOR USE IN DIAGNOSTIC PROCEDURES"

Our Abpromise to you: Quality guaranteed and expert technical support

- Replacement or refund for products not performing as stated on the datasheet
- Valid for 12 months from date of delivery
- Response to your inquiry within 24 hours

- We provide support in Chinese, English, French, German, Japanese and Spanish
- Extensive multi-media technical resources to help you
- We investigate all quality concerns to ensure our products perform to the highest standards

If the product does not perform as described on this datasheet, we will offer a refund or replacement. For full details of the Abpromise, please visit <https://www.abcam.com/abpromise> or contact our technical team.

Terms and conditions

- Guarantee only valid for products bought direct from Abcam or one of our authorized distributors