

## Product datasheet

# Anti-CAMKK2 antibody ab96531

★★★★★ [1 Abreviews](#) [6 References](#) [2 Images](#)

### Overview

---

<b>Product name</b>	Anti-CAMKK2 antibody
<b>Description</b>	Rabbit polyclonal to CAMKK2
<b>Host species</b>	Rabbit
<b>Tested applications</b>	<b>Suitable for:</b> WB, ICC/IF
<b>Species reactivity</b>	<b>Reacts with:</b> Human
<b>Immunogen</b>	Synthetic peptide corresponding to a region within amino acids 1-15 of CAMKK2 isoform 5 (NP_705720)

### General notes

The Life Science industry has been in the grips of a reproducibility crisis for a number of years. Abcam is leading the way in addressing this with our range of recombinant monoclonal antibodies and knockout edited cell lines for gold-standard validation. Please check that this product meets your needs before purchasing.

If you have any questions, special requirements or concerns, please send us an inquiry and/or contact our Support team ahead of purchase. Recommended alternatives for this product can be found below, along with publications, customer reviews and Q&As

### Properties

---

<b>Form</b>	Liquid
<b>Storage instructions</b>	Shipped at 4°C. Upon delivery aliquot and store at -20°C or -80°C. Avoid repeated freeze / thaw cycles.
<b>Storage buffer</b>	pH: 7.00 Preservative: 0.025% Proclin 300 Constituents: 79% PBS, 20% Glycerol (glycerin, glycerine)
<b>Purity</b>	Immunogen affinity purified
<b>Clonality</b>	Polyclonal
<b>Isotype</b>	IgG

### Applications

---

**The Abpromise guarantee** Our **Abpromise guarantee** covers the use of ab96531 in the following tested applications.

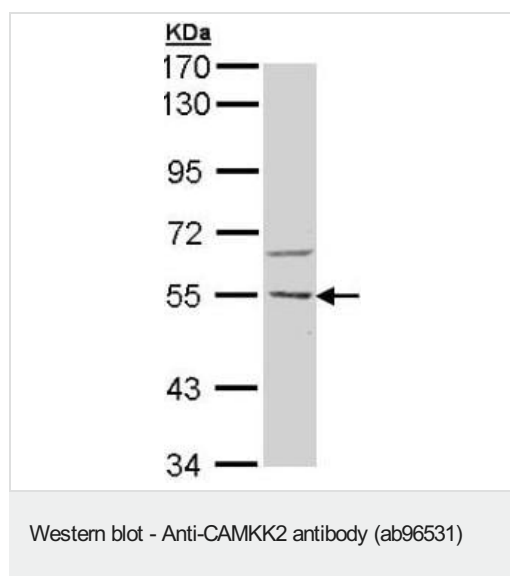
The application notes include recommended starting dilutions; optimal dilutions/concentrations should be determined by the end user.

Application	Abreviews	Notes
WB		1/500 - 1/3000. Predicted molecular weight: 55 kDa.
ICC/IF		1/100 - 1/200.

## Target

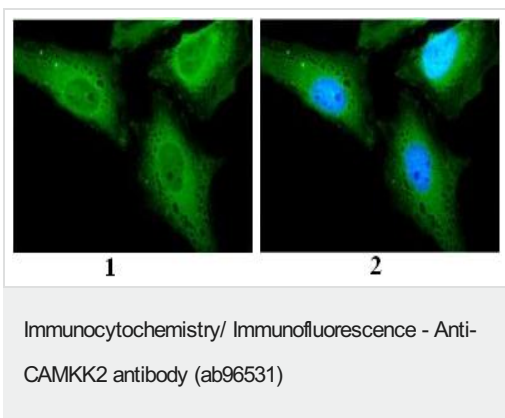
<b>Function</b>	Calcium/calmodulin-dependent protein kinase belonging to a proposed calcium-triggered signaling cascade involved in a number of cellular processes. Isoform 1, isoform 2 and isoform 3 phosphorylate CAMK1 and CAMK4. Isoform 3 phosphorylates CAMK1D. Isoform 4, isoform 5 and isoform 6 lacking part of the calmodulin-binding domain are inactive. Seems to be involved in hippocampal activation of CREB1.
<b>Tissue specificity</b>	Ubiquitously expressed with higher levels in the brain. Intermediate levels are detected in spleen, prostate, thyroid and leukocytes. The lowest level is in lung.
<b>Sequence similarities</b>	Belongs to the protein kinase superfamily. Ser/Thr protein kinase family. Contains 1 protein kinase domain.
<b>Domain</b>	The autoinhibitory domain overlaps with the calmodulin binding region and may be involved in intrasteric autoinhibition. The RP domain (arginine/proline-rich) is involved in the recognition of CAMK1 and CAMK4 as substrates.
<b>Post-translational modifications</b>	Autophosphorylated.
<b>Cellular localization</b>	Cytoplasm.

## Images



Anti-CAMKK2 antibody (ab96531) at 1/500 dilution (10% SDS PAGE) + H1299 whole cell lysate at 30 µg

**Predicted band size:** 55 kDa



Immunofluorescence analysis of paraformaldehyde fixed HeLa using ab96531 at 1/200 dilution: (1) without DNA probe; (2) merged with DNA probe.

**Please note:** All products are "FOR RESEARCH USE ONLY. NOT FOR USE IN DIAGNOSTIC PROCEDURES"

### **Our Abpromise to you: Quality guaranteed and expert technical support**

---

- Replacement or refund for products not performing as stated on the datasheet
- Valid for 12 months from date of delivery
- Response to your inquiry within 24 hours
- We provide support in Chinese, English, French, German, Japanese and Spanish
- Extensive multi-media technical resources to help you
- We investigate all quality concerns to ensure our products perform to the highest standards

If the product does not perform as described on this datasheet, we will offer a refund or replacement. For full details of the Abpromise, please visit <https://www.abcam.com/abpromise> or contact our technical team.

### **Terms and conditions**

---

- Guarantee only valid for products bought direct from Abcam or one of our authorized distributors