


## Product datasheet

# Anti-CAND1 antibody ab101987

3 Images

### Overview

<b>Product name</b>	Anti-CAND1 antibody
<b>Description</b>	Rabbit polyclonal to CAND1
<b>Host species</b>	Rabbit
<b>Tested applications</b>	<b>Suitable for:</b> WB, IP, IHC-P
<b>Species reactivity</b>	<b>Reacts with:</b> Mouse, Human <b>Predicted to work with:</b> Rat, Rabbit, Horse, Chicken, Guinea pig, Cow, Dog, Turkey, Pig, Chimpanzee, Rhesus monkey, Gorilla, Orangutan, Platypus 
<b>Immunogen</b>	Synthetic peptide corresponding to Human CAND1 aa 1180-1230 (internal sequence). Database link: <a href="#">NP_060918.2</a>
<b>Positive control</b>	293T, NIH3T3 and HeLa cell lysates
<b>General notes</b>	<p>The Life Science industry has been in the grips of a reproducibility crisis for a number of years. Abcam is leading the way in addressing this with our range of recombinant monoclonal antibodies and knockout edited cell lines for gold-standard validation. Please check that this product meets your needs before purchasing.</p> <p>If you have any questions, special requirements or concerns, please send us an inquiry and/or contact our Support team ahead of purchase. Recommended alternatives for this product can be found below, along with publications, customer reviews and Q&amp;As</p>

### Properties

<b>Form</b>	Liquid
<b>Storage instructions</b>	Shipped at 4°C. Upon delivery aliquot and store at -20°C. Avoid freeze / thaw cycles.
<b>Storage buffer</b>	pH: 7 Preservative: 0.09% Sodium azide Constituent: Tris citrate/phosphate
<b>Purity</b>	Immunogen affinity purified
<b>Clonality</b>	Polyclonal
<b>Isotype</b>	IgG

### Applications

## The Abpromise guarantee

Our **Abpromise guarantee** covers the use of ab101987 in the following tested applications.

The application notes include recommended starting dilutions; optimal dilutions/concentrations should be determined by the end user.

Application	Abreviews	Notes
WB		1/2000 - 1/10000. Predicted molecular weight: 136 kDa.
IP		Use at 2-5 µg/mg of lysate.
IHC-P		1/1000 - 1/5000. Perform heat mediated antigen retrieval with citrate buffer pH 6 before commencing with IHC staining protocol.

## Target

### Function

Enhances transcription from various types of promoters (By similarity). Regulatory protein that interferes with the assembly of the SCF (SKP1-CUL1-F-box protein) ubiquitin ligase complex and thereby down-regulates ubiquitination of target proteins. Prevents neddylation of CUL1 by physically blocking access to the neddylation site. Disrupts interactions between CUL1 and SKP1 and between CUL1 and F-box proteins.

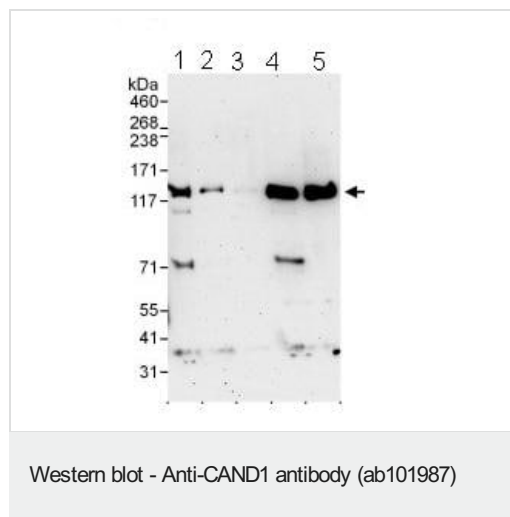
### Sequence similarities

Belongs to the CAND family.  
Contains 27 HEAT repeats.

### Cellular localization

Nucleus.

## Images



**All lanes :** Anti-CAND1 antibody (ab101987) at 0.1 µg

**Lane 1 :** HeLa cell lysate at 50 µg

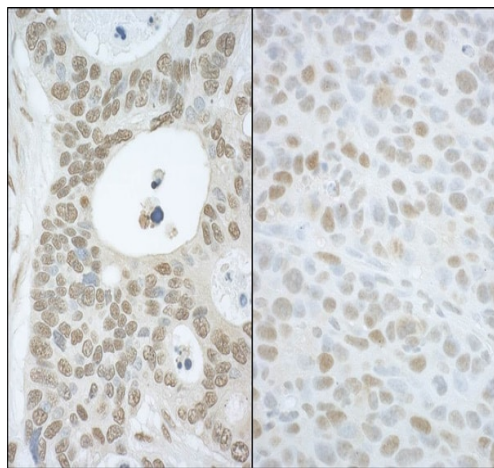
**Lane 2 :** HeLa cell lysate at 15 µg

**Lane 3 :** HeLa cell lysate at 5 µg

**Lane 4 :** 293T cell lysate at 50 µg

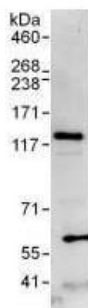
**Lane 5 :** NIH3T3 cell lysate at 50 µg

**Predicted band size:** 136 kDa



Immunohistochemistry (Formalin/PFA-fixed paraffin-embedded sections) - Anti-CAND1 antibody (ab101987)

Immunohistochemistry (Formalin/PFA-fixed paraffin-embedded sections) analysis of human ovarian carcinoma (left) and mouse hybridoma tumor (right) tissues labelling CAND1 with ab101987 at 1/5000 (0.2µg/ml) and 1/1000 (1µg/ml). Detection: DAB.



Immunoprecipitation - Anti-CAND1 antibody (ab101987)

Detection of CAND1 by Western blot of Immunoprecipitate. ab101987, at 1 µg/ml, staining CAND1 in HeLa whole cell lysate immunoprecipitated using ab101987 at 3 µg/mg lysate (1 mg/IP; 20% of IP loaded/lane). Detection: Chemiluminescence with an exposure time of 30 seconds.

**Please note:** All products are "FOR RESEARCH USE ONLY. NOT FOR USE IN DIAGNOSTIC PROCEDURES"

### Our Abpromise to you: Quality guaranteed and expert technical support

- Replacement or refund for products not performing as stated on the datasheet
- Valid for 12 months from date of delivery
- Response to your inquiry within 24 hours
- We provide support in Chinese, English, French, German, Japanese and Spanish

- Extensive multi-media technical resources to help you
- We investigate all quality concerns to ensure our products perform to the highest standards

If the product does not perform as described on this datasheet, we will offer a refund or replacement. For full details of the Abpromise, please visit <https://www.abcam.com/abpromise> or contact our technical team.

#### **Terms and conditions**

---

- Guarantee only valid for products bought direct from Abcam or one of our authorized distributors