

Product datasheet

Anti-Cannabinoid Receptor I antibody ab137410

[3 References](#) [5 Images](#)

Overview

Product name	Anti-Cannabinoid Receptor I antibody
Description	Rabbit polyclonal to Cannabinoid Receptor I
Host species	Rabbit
Tested applications	Suitable for: WB, IHC-P
Species reactivity	Reacts with: Mouse, Rat, Human
Immunogen	Synthetic peptide, corresponding to a region within internal sequence amino acids 270-365 of Human Cannabinoid Receptor I
Positive control	Human Cannabinoid Receptor I transfected HEK-293T cells. U87-MG, mouse brain and Rat brain whole cell lysate.
General notes	<p>The Life Science industry has been in the grips of a reproducibility crisis for a number of years. Abcam is leading the way in addressing this with our range of recombinant monoclonal antibodies and knockout edited cell lines for gold-standard validation. Please check that this product meets your needs before purchasing.</p> <p>If you have any questions, special requirements or concerns, please send us an inquiry and/or contact our Support team ahead of purchase. Recommended alternatives for this product can be found below, along with publications, customer reviews and Q&As</p>

Properties

Form	Liquid
Storage instructions	Shipped at 4°C. Upon delivery aliquot. Store at -20°C or -80°C. Avoid freeze / thaw cycle.
Storage buffer	pH: 7.00 Preservative: 0.01% Thimerosal (merthiolate) Constituents: 79.99% PBS, 20% Glycerol (glycerin, glycerine)
Purity	Protein A purified
Clonality	Polyclonal
Isotype	IgG

Applications

The Abpromise guarantee

Our **Abpromise guarantee** covers the use of ab137410 in the following tested applications.

The application notes include recommended starting dilutions; optimal dilutions/concentrations should be determined by the end user.

Application	Abreviews	Notes
WB		1/1000 - 1/10000. Predicted molecular weight: 53 kDa.
IHC-P		1/100 - 1/1000. Suggested antigen retrieval using heat mediated 10mM Citrate buffer (pH6.0) or Tris-EDTA buffer (pH8.0).

Target

Function

Involved in cannabinoid-induced CNS effects. Acts by inhibiting adenylate cyclase. Could be a receptor for anandamide. Inhibits L-type Ca(2+) channel current. Isoform 2 and isoform 3 have altered ligand binding.

Tissue specificity

Widely expressed.

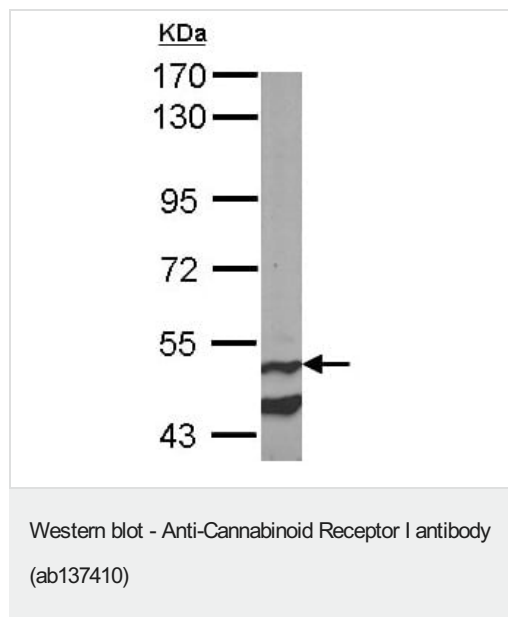
Sequence similarities

Belongs to the G-protein coupled receptor 1 family.

Cellular localization

Cell membrane.

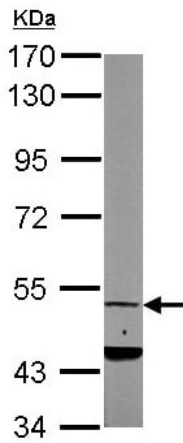
Images



Anti-Cannabinoid Receptor I antibody (ab137410) at 1/5000 dilution + Mouse brain whole cell lysate at 50 µg

Predicted band size: 53 kDa

7.5% SDS PAGE

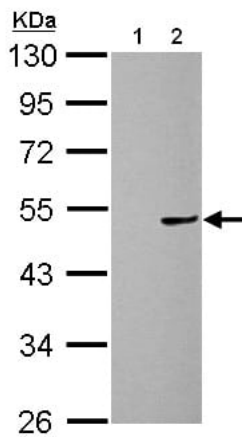


Western blot - Anti-Cannabinoid Receptor I antibody (ab137410)

Anti-Cannabinoid Receptor I antibody (ab137410) at 1/5000 dilution + Rat brain whole cell lysate at 50 µg

Predicted band size: 53 kDa

7.5% SDS PAGE



Western blot - Anti-Cannabinoid Receptor I antibody (ab137410)

All lanes : Anti-Cannabinoid Receptor I antibody (ab137410) at 1/1000 dilution

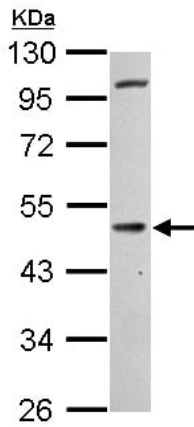
Lane 1 : HEK 293T whole cell lysate

Lane 2 : HEK 293T whole cell lysate transfected with Cannabinoid Receptor I

Lysates/proteins at 10 µg per lane.

Predicted band size: 53 kDa

10 % SDS-PAGE

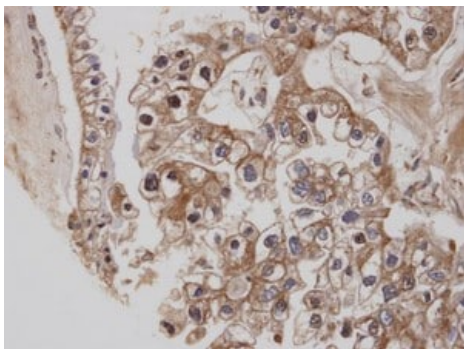


Anti-Cannabinoid Receptor I antibody (ab137410) at 1/1000 dilution + U87-MG whole cell lysate at 30 µg

Predicted band size: 53 kDa

10 % SDS-PAGE

Western blot - Anti-Cannabinoid Receptor I antibody (ab137410)



Immunohistochemical analysis of paraffin-embedded OVCA, labelling Cannabinoid Receptor I using ab137410 at 1/100 dilution.

Immunohistochemistry (Formalin/PFA-fixed paraffin-embedded sections) - Anti-Cannabinoid Receptor I antibody (ab137410)

Please note: All products are "FOR RESEARCH USE ONLY. NOT FOR USE IN DIAGNOSTIC PROCEDURES"

Our Abpromise to you: Quality guaranteed and expert technical support

- Replacement or refund for products not performing as stated on the datasheet
- Valid for 12 months from date of delivery
- Response to your inquiry within 24 hours
- We provide support in Chinese, English, French, German, Japanese and Spanish
- Extensive multi-media technical resources to help you

- We investigate all quality concerns to ensure our products perform to the highest standards

If the product does not perform as described on this datasheet, we will offer a refund or replacement. For full details of the Abpromise, please visit <https://www.abcam.com/abpromise> or contact our technical team.

Terms and conditions

- Guarantee only valid for products bought direct from Abcam or one of our authorized distributors