

Product datasheet

Anti-Cannabinoid Receptor I antibody [H6] ab284657

Recombinant

[2 Images](#)

Overview

Product name	Anti-Cannabinoid Receptor I antibody [H6]
Description	Rabbit monoclonal [H6] to Cannabinoid Receptor I
Host species	Rabbit
Tested applications	Suitable for: Flow Cyt
Species reactivity	Reacts with: Human
Immunogen	Synthetic peptide within Human Cannabinoid Receptor I. The exact immunogen sequence used to generate this antibody is proprietary information. If additional detail on the immunogen is needed to determine the suitability of the antibody for your needs, please contact our Scientific Support team to discuss your requirements. Database link: P21554
General notes	This product is a recombinant monoclonal antibody, which offers several advantages including: <ul style="list-style-type: none">- High batch-to-batch consistency and reproducibility- Improved sensitivity and specificity- Long-term security of supply- Animal-free production For more information see here .

Properties

Form	Liquid
Storage instructions	Shipped at 4°C. Store at +4°C short term (1-2 weeks). Upon delivery aliquot. Store at -20°C long term. Avoid freeze / thaw cycle.
Storage buffer	Preservative: 0.09% Sodium azide Constituents: 0.2% BSA, 98% PBS
Purity	Protein A purified
Clonality	Monoclonal
Clone number	H6
Isotype	IgG
Light chain type	kappa

Applications

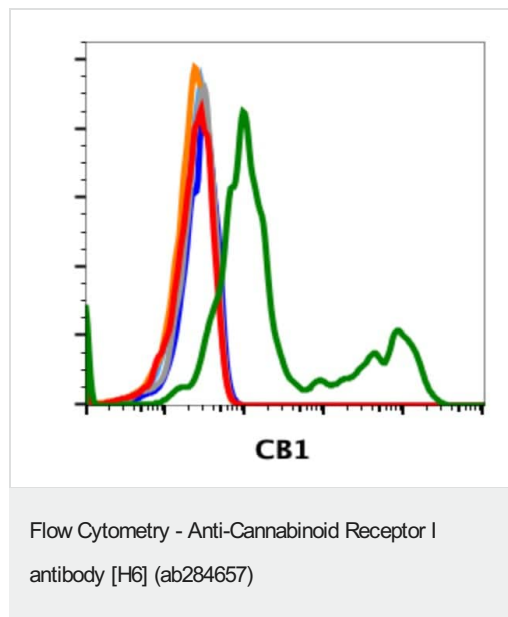
The Abpromise guarantee Our **Abpromise guarantee** covers the use of ab284657 in the following tested applications. The application notes include recommended starting dilutions; optimal dilutions/concentrations should be determined by the end user.

Application	Abreviews	Notes
Flow Cyt		Use 5µl for 10 ⁶ cells.

Target

Function	Involved in cannabinoid-induced CNS effects. Acts by inhibiting adenylate cyclase. Could be a receptor for anandamide. Inhibits L-type Ca(2+) channel current. Isoform 2 and isoform 3 have altered ligand binding.
Tissue specificity	Widely expressed.
Sequence similarities	Belongs to the G-protein coupled receptor 1 family.
Cellular localization	Cell membrane.

Images



Flow cytometric analysis of HEK293 cells transfected with CB1 (green) or untransfected (red) using ab284657 at 0.1 µg/mL. Isotype control antibody tested under identical conditions does not show staining to transfected (orange) or untransfected (gray) cells.

Why choose a recombinant antibody?



Research with confidence
Consistent and reproducible results



Long-term and scalable supply
Recombinant technology



Success from the first experiment
Confirmed specificity



Ethical standards compliant
Animal-free production

Anti-Cannabinoid Receptor 1 antibody [H6]
(ab284657)

Please note: All products are "FOR RESEARCH USE ONLY. NOT FOR USE IN DIAGNOSTIC PROCEDURES"

Our Abpromise to you: Quality guaranteed and expert technical support

- Replacement or refund for products not performing as stated on the datasheet
- Valid for 12 months from date of delivery
- Response to your inquiry within 24 hours
- We provide support in Chinese, English, French, German, Japanese and Spanish
- Extensive multi-media technical resources to help you
- We investigate all quality concerns to ensure our products perform to the highest standards

If the product does not perform as described on this datasheet, we will offer a refund or replacement. For full details of the Abpromise, please visit <https://www.abcam.com/abpromise> or contact our technical team.

Terms and conditions

- Guarantee only valid for products bought direct from Abcam or one of our authorized distributors