

Product datasheet

Anti-CAP1 antibody [EPR8338] ab133655

Recombinant RabMAb

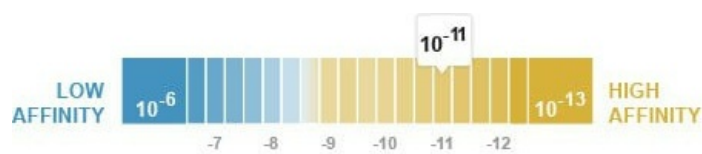
[6 References](#) [6 Images](#)

Overview

Product name	Anti-CAP1 antibody [EPR8338]
Description	Rabbit monoclonal [EPR8338] to CAP1
Host species	Rabbit
Tested applications	Suitable for: WB, IHC-P, ICC/IF Unsuitable for: Flow Cyt
Species reactivity	Reacts with: Human
Immunogen	Synthetic peptide within Human CAP1 aa 1-100. The exact sequence is proprietary.
Positive control	HepG2, 293T, K562 and Raji cell lysates; Human bladder carcinoma tissue; HeLa cells.
General notes	This product is a recombinant monoclonal antibody, which offers several advantages including: <ul style="list-style-type: none"> - High batch-to-batch consistency and reproducibility - Improved sensitivity and specificity - Long-term security of supply - Animal-free production For more information see here . Our RabMAb [®] technology is a patented hybridoma-based technology for making rabbit monoclonal antibodies. For details on our patents, please refer to RabMAb[®] patents .

Properties

Form	Liquid
Storage instructions	Shipped at 4°C. Store at -20°C. Stable for 12 months at -20°C.
Dissociation constant (K_D)	K _D = 5.46 x 10 ⁻¹¹ M



[Learn more about K_D](#)

Storage buffer	pH: 7.20 Preservative: 0.01% Sodium azide Constituents: 9% PBS, 40% Glycerol (glycerin, glycerine), 0.05% BSA, 50% Tissue culture
-----------------------	---

	supernatant
Purity	Tissue culture supernatant
Clonality	Monoclonal
Clone number	EPR8338
Isotype	IgG

Applications

The Abpromise guarantee Our **Abpromise guarantee** covers the use of ab133655 in the following tested applications. The application notes include recommended starting dilutions; optimal dilutions/concentrations should be determined by the end user.

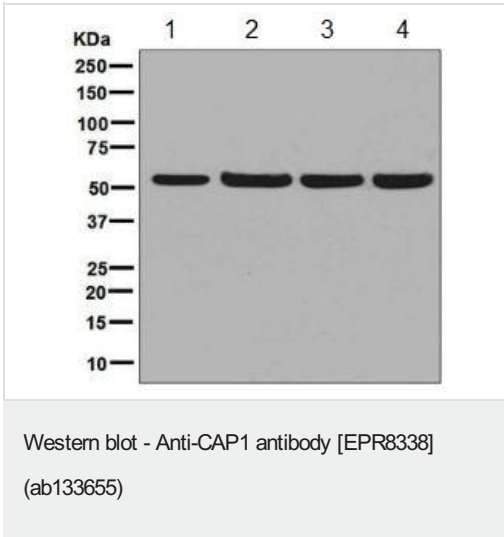
Application	Abreviews	Notes
WB		1/10000 - 1/50000. Detects a band of approximately 52 kDa (predicted molecular weight: 52 kDa).
IHC-P		1/100 - 1/250. Perform heat mediated antigen retrieval before commencing with IHC staining protocol.
ICC/IF		1/250 - 1/500.

Application notes Is unsuitable for Flow Cyt.

Target

Function	Directly regulates filament dynamics and has been implicated in a number of complex developmental and morphological processes, including mRNA localization and the establishment of cell polarity.
Sequence similarities	Belongs to the CAP family. Contains 1 C-CAP/cofactor C-like domain.
Cellular localization	Cell membrane.

Images



All lanes : Anti-CAP1 antibody [EPR8338] (ab133655) at 1/10000 dilution

Lane 1 : HepG2 cell lysate

Lane 2 : 293T cell lysate

Lane 3 : K562 cell lysate

Lane 4 : Raji cell lysate

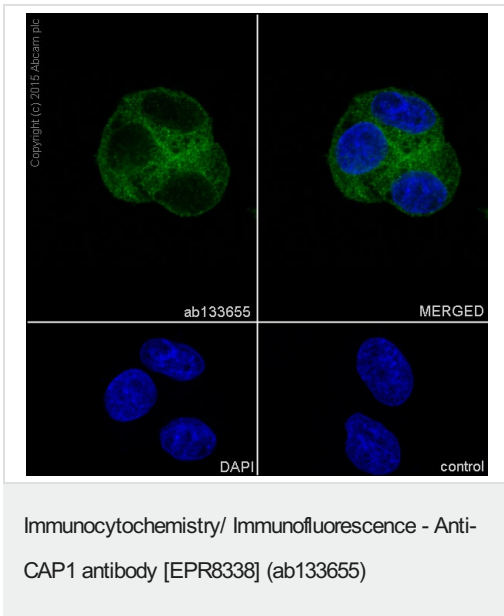
Lysates/proteins at 10 µg per lane.

Secondary

All lanes : HRP labelled goat anti-rabbit at 1/2000 dilution

Predicted band size: 52 kDa

Observed band size: 52 kDa



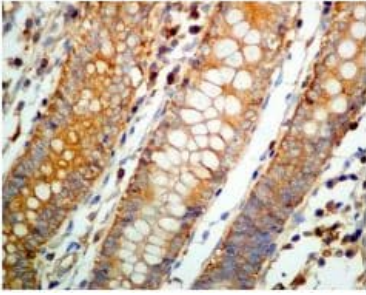
Immunocytochemistry/Immunofluorescence analysis of HepG2 (human hepatocellular carcinoma) cells labelling CAP1 with purified ab133655 at a dilution of 1/500. Cells were fixed with 4% Paraformaldehyde and permeabilised with 0.1% tritonX-100. An Alexa Fluor® 488-conjugated goat anti-rabbit IgG (**ab150077**) at dilution of 1/1000 was used as the secondary antibody. Nuclei counterstained with DAPI (blue).

Secondary Only Control: PBS was used instead of the primary antibody as the negative control.



Immunohistochemical analysis of paraffin-embedded human bladder carcinoma tissue labelling CAP1 with ab133655 at 1/100 dilution.

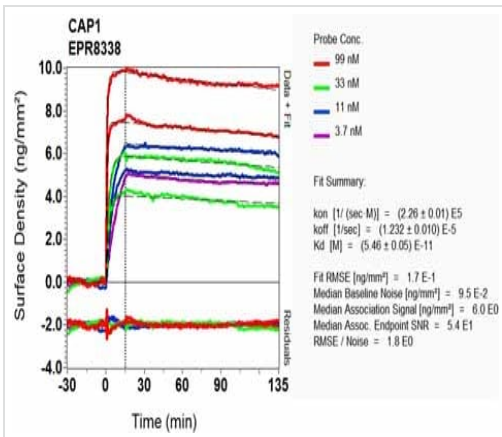
Perform heat mediated antigen retrieval before commencing with IHC staining protocol.



Immunohistochemistry (Formalin/PFA-fixed paraffin-embedded sections) - Anti-CAP1 antibody [EPR8338] (ab133655)

Immunohistochemical analysis of paraffin-embedded human bladder carcinoma tissue labelling CAP1 with ab133655 at 1/100 dilution.

Perform heat mediated antigen retrieval before commencing with IHC staining protocol.



OIR-D Scanning - Anti-CAP1 antibody [EPR8338] (ab133655)

Equilibrium dissociation constant (K_D)

Learn more about K_D

[Click here to learn more about \$K_D\$](#)

Why choose a recombinant antibody?

- Research with confidence**
Consistent and reproducible results
- Long-term and scalable supply**
Recombinant technology
- Success from the first experiment**
Confirmed specificity
- Ethical standards compliant**
Animal-free production

Anti-CAP1 antibody [EPR8338] (ab133655)

Please note: All products are "FOR RESEARCH USE ONLY. NOT FOR USE IN DIAGNOSTIC PROCEDURES"

Our Abpromise to you: Quality guaranteed and expert technical support

-
- Replacement or refund for products not performing as stated on the datasheet
 - Valid for 12 months from date of delivery
 - Response to your inquiry within 24 hours

 - We provide support in Chinese, English, French, German, Japanese and Spanish
 - Extensive multi-media technical resources to help you
 - We investigate all quality concerns to ensure our products perform to the highest standards

If the product does not perform as described on this datasheet, we will offer a refund or replacement. For full details of the Abpromise, please visit <https://www.abcam.com/abpromise> or contact our technical team.

Terms and conditions

- Guarantee only valid for products bought direct from Abcam or one of our authorized distributors