

## Product datasheet

# Anti-CAP2 antibody [EPR6378] ab133558

Recombinant RabMAb

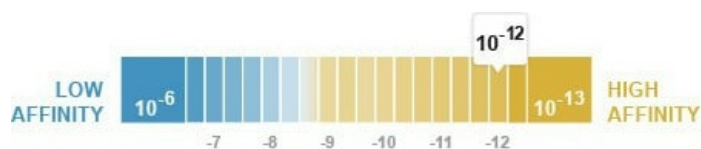
4 Images

### Overview

<b>Product name</b>	Anti-CAP2 antibody [EPR6378]
<b>Description</b>	Rabbit monoclonal [EPR6378] to CAP2
<b>Host species</b>	Rabbit
<b>Tested applications</b>	<b>Suitable for:</b> WB, Flow Cyt (Intra) <b>Unsuitable for:</b> ICC/IF, IHC-P or IP
<b>Species reactivity</b>	<b>Reacts with:</b> Human
<b>Immunogen</b>	Synthetic peptide within Human CAP2 aa 450 to the C-terminus. The exact sequence is proprietary. Database link: <a href="#">P40123</a>
<b>Positive control</b>	Saos 2, A673, Human testis, Human heart, and Human fetal muscle lysates; Saos 2 cells.
<b>General notes</b>	This product is a recombinant monoclonal antibody, which offers several advantages including: <ul style="list-style-type: none"> <li>- High batch-to-batch consistency and reproducibility</li> <li>- Improved sensitivity and specificity</li> <li>- Long-term security of supply</li> <li>- Animal-free production</li> </ul> For more information <a href="#">see here</a> . Our RabMAb <sup>®</sup> technology is a patented hybridoma-based technology for making rabbit monoclonal antibodies. For details on our patents, please refer to <a href="#">RabMAb<sup>®</sup> patents</a> .  Mouse, Rat: We have preliminary internal testing data to indicate this antibody may not react with these species. Please contact us for more information.

### Properties

<b>Form</b>	Liquid
<b>Storage instructions</b>	Shipped at 4°C. Store at -20°C. Stable for 12 months at -20°C.
<b>Dissociation constant (K<sub>D</sub>)</b>	K <sub>D</sub> = 2.80 x 10 <sup>-12</sup> M



[Learn more about K<sub>D</sub>](#)

<b>Storage buffer</b>	pH: 7.2 Preservative: 0.05% Sodium azide Constituents: 40% Glycerol (glycerin, glycerine), 9.85% Tris glycine, 50% Tissue culture supernatant
<b>Purity</b>	Tissue culture supernatant
<b>Clonality</b>	Monoclonal
<b>Clone number</b>	EPR6378
<b>Isotype</b>	IgG

**Applications**

---

**The Abpromise guarantee** Our **Abpromise guarantee** covers the use of ab133558 in the following tested applications. The application notes include recommended starting dilutions; optimal dilutions/concentrations should be determined by the end user.

Application	Abreviews	Notes
<b>WB</b>		1/1000 - 1/10000. Detects a band of approximately 52 kDa (predicted molecular weight: 53 kDa).
<b>Flow Cyt (Intra)</b>		1/10 - 1/100. <b>ab172730</b> - Rabbit monoclonal IgG, is suitable for use as an isotype control with this antibody.

**Application notes** Is unsuitable for ICC/IF, IHC-P or IP.

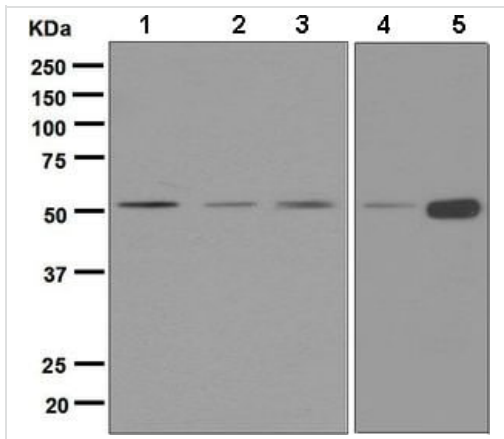
**Target**

---

<b>Function</b>	May have a regulatory bifunctional role.
<b>Sequence similarities</b>	Belongs to the CAP family. Contains 1 C-CAP/cofactor C-like domain.
<b>Cellular localization</b>	Cell membrane.

**Images**

---



Western blot - Anti-CAP2 antibody [EPR6378] (ab133558)

**All lanes :** Anti-CAP2 antibody [EPR6378] (ab133558) at 1/1000 dilution

**Lane 1 :** Saos 2 cell lysate

**Lane 2 :** A673 cell lysate

**Lane 3 :** Human testis cell lysate

**Lane 4 :** Human heart cell lysate

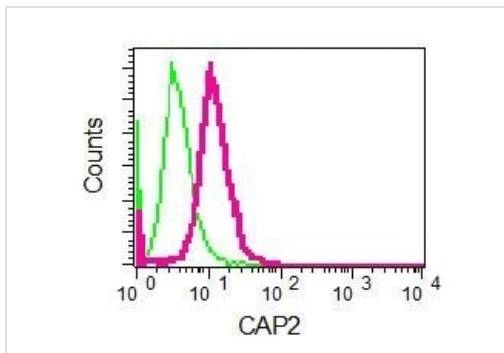
**Lane 5 :** Human fetal muscle cell lysate

Lysates/proteins at 10 µg per lane.

### Secondary

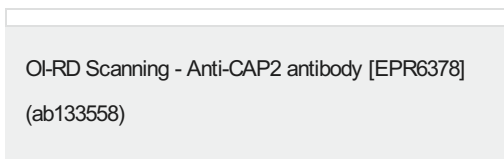
**All lanes :** HRP labelled goat anti-rabbit at 1/2000 dilution

**Predicted band size:** 53 kDa



Flow Cytometry (Intracellular) - Anti-CAP2 antibody [EPR6378] (ab133558)

Intracellular flow cytometric analysis of permeabilized Saos 2 cells labelling CAP2 with ab133558 at 1/10 dilution (red) or a rabbit IgG (negative) (green).







OI-RD Scanning - Anti-CAP2 antibody [EPR6378] (ab133558)

Equilibrium disassociation constant ( $K_D$ )

Learn more about  $K_D$

[Click here to learn more about  \$K\_D\$](#)

Why choose a recombinant antibody?

 <p><b>Research with confidence</b> Consistent and reproducible results</p>	 <p><b>Long-term and scalable supply</b> Recombinant technology</p>
 <p><b>Success from the first experiment</b> Confirmed specificity</p>	 <p><b>Ethical standards compliant</b> Animal-free production</p>

Anti-CAP2 antibody [EPR6378] (ab133558)

**Please note:** All products are "FOR RESEARCH USE ONLY. NOT FOR USE IN DIAGNOSTIC PROCEDURES"

### Our Abpromise to you: Quality guaranteed and expert technical support

---

- Replacement or refund for products not performing as stated on the datasheet
- Valid for 12 months from date of delivery
- Response to your inquiry within 24 hours
- We provide support in Chinese, English, French, German, Japanese and Spanish
- Extensive multi-media technical resources to help you
- We investigate all quality concerns to ensure our products perform to the highest standards

If the product does not perform as described on this datasheet, we will offer a refund or replacement. For full details of the Abpromise, please visit <https://www.abcam.com/abpromise> or contact our technical team.

### Terms and conditions

---

- Guarantee only valid for products bought direct from Abcam or one of our authorized distributors