

Product datasheet

Anti-Carbonic Anhydrase 12/CA12 antibody [EPR14861] - C-terminal ab195233

KO **VALIDATED** Recombinant RabMAB

★★★★☆ [1 Abreviews](#) [5 References](#) [10 Images](#)

Overview

Product name	Anti-Carbonic Anhydrase 12/CA12 antibody [EPR14861] - C-terminal
Description	Rabbit monoclonal [EPR14861] to Carbonic Anhydrase 12/CA12 - C-terminal
Host species	Rabbit
Tested applications	Suitable for: Flow Cyt (Intra), IHC-P, WB
Species reactivity	Reacts with: Human
Immunogen	Synthetic peptide. This information is proprietary to Abcam and/or its suppliers.
Positive control	MCF7, SKOV3, 293, HeLa, A549, Human fetal kidney, Human ovary cancer and Human breast cancer lysates; Human renal adenocarcinoma, ovarian carcinoma, bladder transitional cell carcinoma, pancreas, colon and stomach tissues; SK-OV-3 cells.
General notes	<p>This product is a recombinant monoclonal antibody, which offers several advantages including:</p> <ul style="list-style-type: none">- High batch-to-batch consistency and reproducibility- Improved sensitivity and specificity- Long-term security of supply- Animal-free production <p>For more information see here.</p> <p>Our RabMAB[®] technology is a patented hybridoma-based technology for making rabbit monoclonal antibodies. For details on our patents, please refer to RabMAB[®] patents.</p>

Properties

Form	Liquid
Storage instructions	Shipped at 4°C. Store at +4°C short term (1-2 weeks). Upon delivery aliquot. Store at -20°C long term. Avoid freeze / thaw cycle.
Storage buffer	pH: 7.2 Preservative: 0.01% Sodium azide Constituents: 40% Glycerol (glycerin, glycerine), PBS, 0.05% BSA
Purity	Protein A purified
Clonality	Monoclonal

Clone number EPR14861
Isotype IgG

Applications

The Abpromise guarantee Our **Abpromise guarantee** covers the use of ab195233 in the following tested applications.

The application notes include recommended starting dilutions; optimal dilutions/concentrations should be determined by the end user.

Application	Abreviews	Notes
Flow Cyt (Intra)		1/130. ab172730 - Rabbit monoclonal IgG, is suitable for use as an isotype control with this antibody.
IHC-P	★★★★★ (1)	1/50 - 1/100. Perform heat mediated antigen retrieval with Tris/EDTA buffer pH 9.0 before commencing with IHC staining protocol.
WB		1/10000. Detects a band of approximately 45 kDa (predicted molecular weight: 39 kDa).

Target

Function Reversible hydration of carbon dioxide.

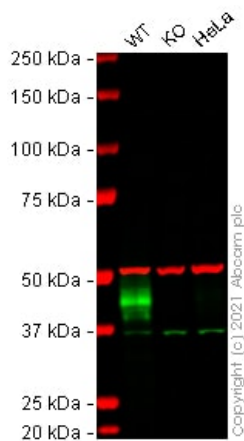
Tissue specificity Highly expressed in colon, kidney, prostate, intestine and activated lymphocytes. Expressed at much higher levels in the renal cell cancers than in surrounding normal kidney tissue. Moderately expressed in pancreas, ovary and testis.

Involvement in disease Defects in CA12 are the cause of hyperchlorhidrosis isolated (HCHLH) [MIM:143860]. HCHLH is a disorder characterized by excessive sweating and increased sweat chloride levels. Affected individuals suffer from episodes of hyponatremic dehydration and report increased amounts of visible salt precipitates in sweat.

Sequence similarities Belongs to the alpha-carbonic anhydrase family.

Cellular localization Membrane.

Images



Western blot - Anti-Carbonic Anhydrase 12/CA12 antibody [EPR14861] - C-terminal (ab195233)

All lanes : Anti-Carbonic Anhydrase 12/CA12 antibody [EPR14861] - C-terminal (ab195233) at 1/10000 dilution

Lane 1 : Wild-type A549 (Human lung carcinoma cell line) whole cell lysate

Lane 2 : Ca12 knockout A549 (Human lung carcinoma cell line) whole cell lysate

Lane 3 : HeLa (Human epithelial cell line from cervix adenocarcinoma) whole cell lysate

Lysates/proteins at 20 µg per lane.

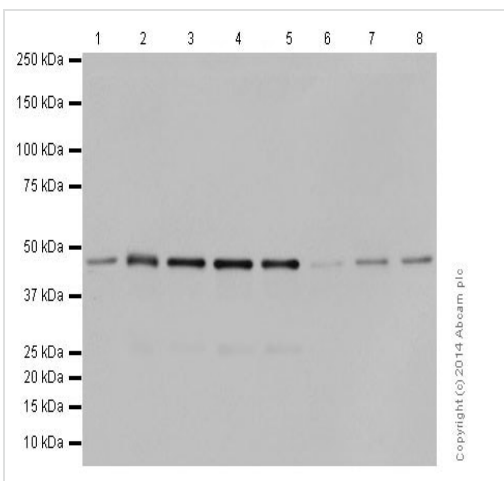
Performed under reducing conditions.

Predicted band size: 39 kDa

Observed band size: 40 kDa

Lanes 1 - 3: Merged signal (red and green). Green - ab195233 observed at 40 kDa. Red - loading control **ab7291** (Mouse anti-Alpha Tubulin [DM1A]) observed at 55 kDa.

ab195233 was shown to react with Carbonic Anhydrase 12/CA12 in wild-type A549 cells in Western blot with loss of signal observed in Ca12 knockout cell line **ab273738** (knockout cell lysate **ab273778**). Wild-type A549 and Ca12 knockout cell lysates were subjected to SDS-PAGE. Membranes were blocked in 3 % milk in TBS-T (0.1 % Tween[®]) before incubation with ab195233 and **ab7291** (Mouse anti-Alpha Tubulin [DM1A]) overnight at 4 °C at a 1 in 10000 dilution and a 1 in 20000 dilution respectively. Blots were incubated with Goat anti-Rabbit IgG H&L (IRDye[®] 800CW) preabsorbed (**ab216773**) and Goat anti-Mouse IgG H&L (IRDye[®] 680RD) preabsorbed (**ab216776**) secondary antibodies at 1 in 20000 dilution for 1 h at room temperature before imaging.



Western blot - Anti-Carbonic Anhydrase 12/CA12 antibody [EPR14861] - C-terminal (ab195233)

All lanes : Anti-Carbonic Anhydrase 12/CA12 antibody [EPR14861] - C-terminal (ab195233) at 1/10000 dilution

Lane 1 : MCF7 cell lysate

Lanes 2 & 5 : SKOV3 cell lysate

Lane 3 : 293 cell lysate

Lane 4 : HeLa cell lysate

Lane 6 : Human fetal kidney lysate

Lane 7 : Human ovary cancer lysate

Lane 8 : Human breast cancer lysate

Lysates/proteins at 10 µg per lane.

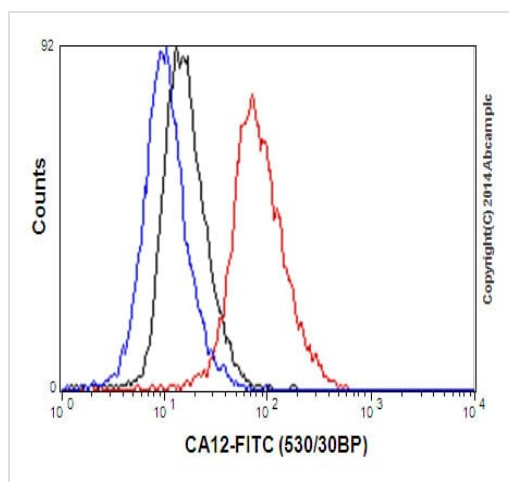
Secondary

All lanes : Goat Anti-Rabbit IgG, (H+L), Peroxidase conjugate at 1/1000 dilution

Developed using the ECL technique.

Predicted band size: 39 kDa

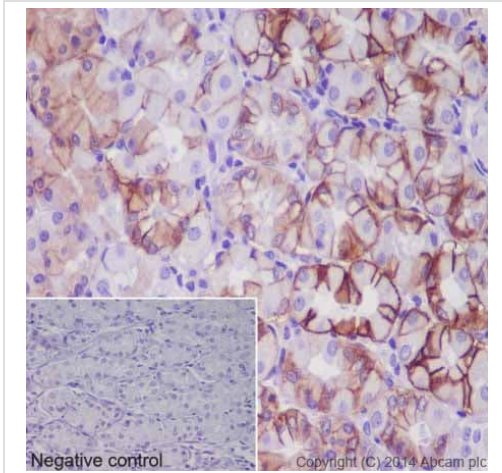
Exposure time: 10 seconds



Flow Cytometry (Intracellular) - Anti-Carbonic Anhydrase 12/CA12 antibody [EPR14861] - C-terminal (ab195233)

Intracellular flow cytometric analysis of SK-OV-3cells

(paraformaldehyde-fixed, 2%) labeling CA12 with ab195233 at 1/130 dilution (red) or a Rabbit monoclonal IgG (negative) (black), followed by Goat anti rabbit IgG (FITC) secondary at 1/150 dilution. Unlabeled cells (Blue).

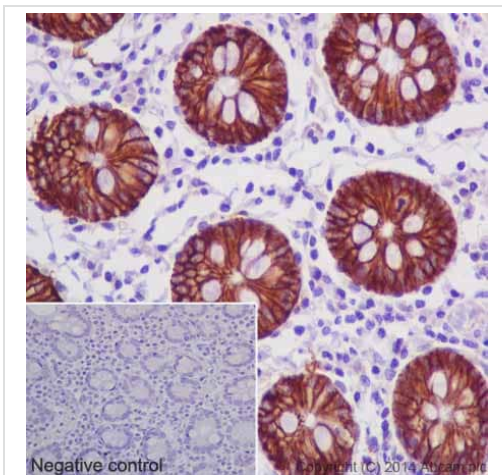


Immunohistochemistry (Formalin/PFA-fixed paraffin-embedded sections) - Anti-Carbonic Anhydrase 12/CA12 antibody [EPR14861] - C-terminal (ab195233)

Immunohistochemical analysis of paraffin-embedded Human stomach tissue labeling CA12 with ab195233 at 1/100 dilution followed by Goat Anti-Rabbit IgG H&L (HRP) ([ab97051](#)) at 1/500 dilution and counter-stained with Hematoxylin. (inset: negative control).

Note: Cell membrane and cytoplasm staining on human stomach tissue was observed.

Perform heat mediated antigen retrieval with Tris/EDTA buffer pH 9.0 before commencing with IHC staining protocol.

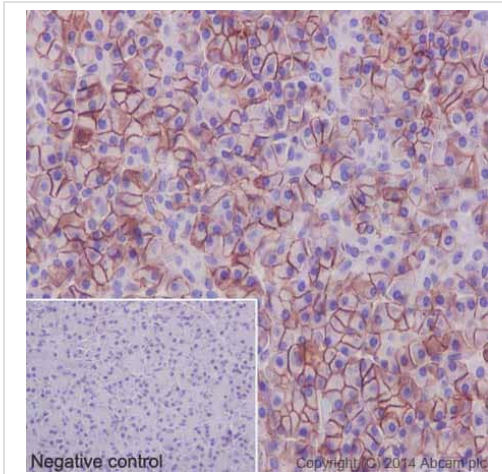


Immunohistochemistry (Formalin/PFA-fixed paraffin-embedded sections) - Anti-Carbonic Anhydrase 12/CA12 antibody [EPR14861] - C-terminal (ab195233)

Immunohistochemical analysis of paraffin-embedded human colon tissue labeling CA12 with ab195233 at 1/100 dilution followed by Goat Anti-Rabbit IgG H&L (HRP) ([ab97051](#)) at 1/500 dilution and counter-stained with Hematoxylin. (inset: negative control).

Note: Cell membrane and cytoplasm staining on human colon tissue was observed.

Perform heat mediated antigen retrieval with Tris/EDTA buffer pH 9.0 before commencing with IHC staining protocol.

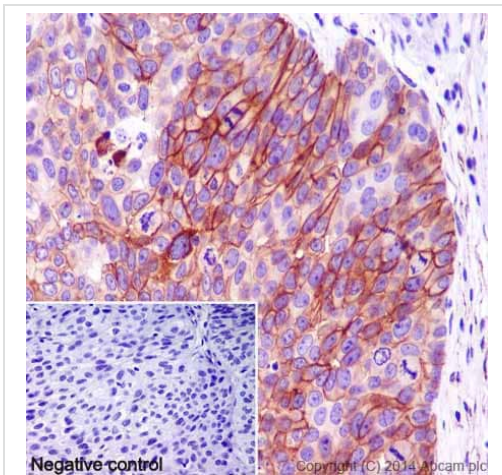


Immunohistochemistry (Formalin/PFA-fixed paraffin-embedded sections) - Anti-Carbonic Anhydrase 12/CA12 antibody [EPR14861] - C-terminal (ab195233)

Immunohistochemical analysis of paraffin-embedded Human pancreas tissue labeling CA12 with ab195233 at 1/100 dilution followed by Goat Anti-Rabbit IgG H&L (HRP) (**ab97051**) at 1/500 dilution and counter-stained with Hematoxylin. (inset: negative control).

Note: Cell membrane and weakly cytoplasm staining on human pancreas tissue was observed.

Perform heat mediated antigen retrieval with Tris/EDTA buffer pH 9.0 before commencing with IHC staining protocol.

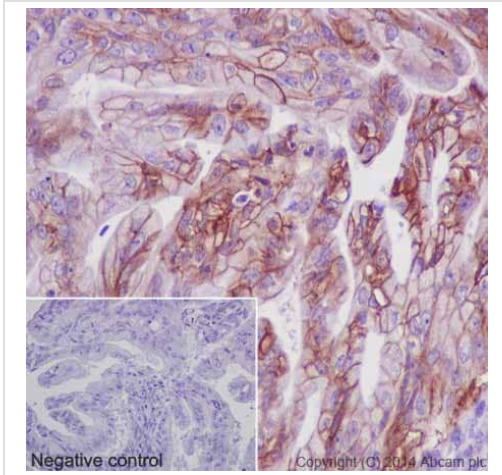


Immunohistochemistry (Formalin/PFA-fixed paraffin-embedded sections) - Anti-Carbonic Anhydrase 12/CA12 antibody [EPR14861] - C-terminal (ab195233)

Immunohistochemical analysis of paraffin-embedded Human bladder transitional cell carcinoma tissue labeling CA12 with ab195233 at 1/100 dilution followed by Goat Anti-Rabbit IgG H&L (HRP) (**ab97051**) at 1/500 dilution and counter-stained with Hematoxylin. (inset: negative control).

Note: Cell membrane and weakly cytoplasm staining on human transitional cell carcinoma of bladder tissue was observed.

Perform heat mediated antigen retrieval with Tris/EDTA buffer pH 9.0 before commencing with IHC staining protocol.

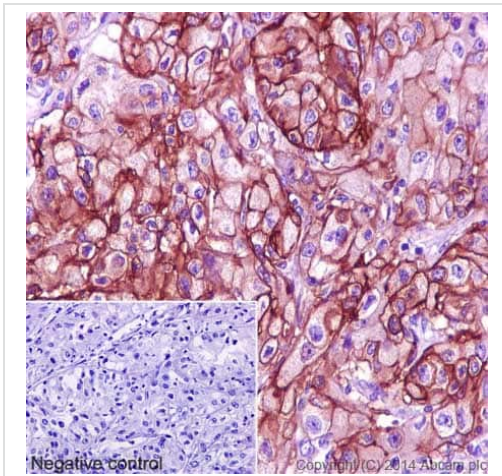


Immunohistochemistry (Formalin/PFA-fixed paraffin-embedded sections) - Anti-Carbonic Anhydrase 12/CA12 antibody [EPR14861] - C-terminal (ab195233)

Immunohistochemical analysis of paraffin-embedded Human ovarian carcinoma tissue labeling CA12 with ab195233 at 1/100 dilution followed by Goat Anti-Rabbit IgG H&L (HRP) (**ab97051**) at 1/500 dilution and counter-stained with Hematoxylin. (inset: negative control).

Note: Cell membrane and weakly cytoplasm staining on human ovarian carcinoma tissue was observed.

Perform heat mediated antigen retrieval with Tris/EDTA buffer pH 9.0 before commencing with IHC staining protocol.



Immunohistochemistry (Formalin/PFA-fixed paraffin-embedded sections) - Anti-Carbonic Anhydrase 12/CA12 antibody [EPR14861] - C-terminal (ab195233)

Immunohistochemical analysis of paraffin-embedded Human renal adenocarcinoma tissue labeling CA12 with ab195233 at 1/100 dilution followed by Goat Anti-Rabbit IgG H&L (HRP) (**ab97051**) at 1/500 dilution and counter-stained with Hematoxylin. (inset: negative control).

Note: Cell membrane and cytoplasm staining on human renal adenocarcinoma tissue was observed.

Perform heat mediated antigen retrieval with Tris/EDTA buffer pH 9.0 before commencing with IHC staining protocol.

Why choose a recombinant antibody?



Research with confidence
Consistent and reproducible results



Long-term and scalable supply
Recombinant technology



Success from the first experiment
Confirmed specificity



Ethical standards compliant
Animal-free production

Anti-Carbonic Anhydrase 12/CA12 antibody

[EPR14861] - C-terminal (ab195233)

Please note: All products are "FOR RESEARCH USE ONLY. NOT FOR USE IN DIAGNOSTIC PROCEDURES"

Our Abpromise to you: Quality guaranteed and expert technical support

- Replacement or refund for products not performing as stated on the datasheet
- Valid for 12 months from date of delivery
- Response to your inquiry within 24 hours
- We provide support in Chinese, English, French, German, Japanese and Spanish
- Extensive multi-media technical resources to help you
- We investigate all quality concerns to ensure our products perform to the highest standards

If the product does not perform as described on this datasheet, we will offer a refund or replacement. For full details of the Abpromise, please visit <https://www.abcam.com/abpromise> or contact our technical team.

Terms and conditions

- Guarantee only valid for products bought direct from Abcam or one of our authorized distributors