



Product datasheet

Anti-CARD14 antibody ab168096

1 Image

Overview

Product name	Anti-CARD14 antibody
Description	Mouse polyclonal to CARD14
Host species	Mouse
Tested applications	Suitable for: WB
Species reactivity	Reacts with: Human
Immunogen	Recombinant full length protein corresponding to amino acids 1-434 of Human CARD14 according to NP_438170.1  Run BLAST with ExPASy  Run BLAST with NCBI
Positive control	CARD14 transfected 293T cell line lysate
General notes	<p>The Life Science industry has been in the grips of a reproducibility crisis for a number of years. Abcam is leading the way in addressing this with our range of recombinant monoclonal antibodies and knockout edited cell lines for gold-standard validation. Please check that this product meets your needs before purchasing.</p> <p>If you have any questions, special requirements or concerns, please send us an inquiry and/or contact our Support team ahead of purchase. Recommended alternatives for this product can be found below, along with publications, customer reviews and Q&As</p>

Properties

Form	Liquid
Storage instructions	Shipped at 4°C. Store at +4°C short term (1-2 weeks). Upon delivery aliquot. Store at -20°C long term.
Storage buffer	pH: 7.4 Constituent: 99% PBS
Purity	Protein A purified
Clonality	Polyclonal
Isotype	IgG

Applications

The Abpromise guarantee

Our **Abpromise guarantee** covers the use of ab168096 in the following tested applications.

The application notes include recommended starting dilutions; optimal dilutions/concentrations should be determined by the end user.

Application	Abreviews	Notes
WB		Use a concentration of 1 µg/ml. Predicted molecular weight: 113 kDa.

Target

Function

Activates NF-kappa-B via BCL10 and IKK. Stimulates the phosphorylation of BCL10.

Tissue specificity

Expressed in placenta. Also detected in HeLaS3 cell line, but not in the other cancer cell lines tested. Expressed in epidermal keratinocytes.

Involvement in disease

Defects in CARD14 are the cause of susceptibility to psoriasis type 2 (PSORS2) [MIM:602723]. A common, chronic inflammatory disease of the skin with multifactorial etiology. It is characterized by red, scaly plaques usually found on the scalp, elbows and knees. These lesions are caused by abnormal keratinocyte proliferation and infiltration of inflammatory cells into the dermis and epidermis.

Defects in CARD14 are the cause of pityriasis rubra pilaris (PRP) [MIM:173200]. A rare, papulosquamous skin disease characterized by the appearance of keratotic follicular papules, well-demarcated salmon-colored erythematous plaques covered with fine powdery scales interspersed with distinct islands of uninvolved skin, and palmoplantar keratoderma. Most cases are sporadic. The rare familial cases show autosomal dominant inheritance with incomplete penetrance and variable expression. Familial PRP usually presents at birth or appears during the first years of life and runs a chronic course. It is characterized by prominent follicular hyperkeratosis, diffuse palmoplantar keratoderma, and erythema.

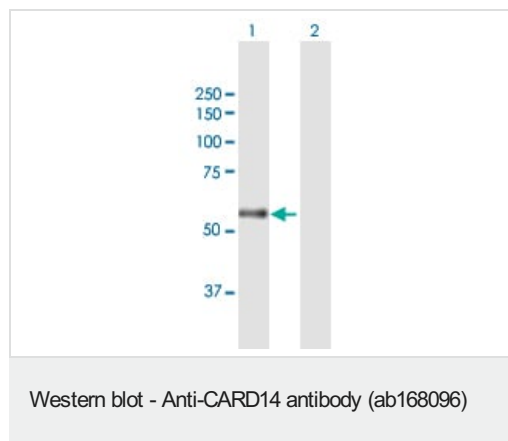
Sequence similarities

Contains 1 CARD domain.
Contains 1 guanylate kinase-like domain.
Contains 1 PDZ (DHR) domain.

Cellular localization

Cytoplasm.

Images



All lanes : Anti-CARD14 antibody (ab168096) at 1 µg/ml

Lane 1 : CARD14 transfected 293T cell line lysate

Lane 2 : Non-transfected 293T cell line lysate

Lysates/proteins at 15 µl per lane.

Predicted band size: 113 kDa

Please note: All products are "FOR RESEARCH USE ONLY. NOT FOR USE IN DIAGNOSTIC PROCEDURES"

Our Abpromise to you: Quality guaranteed and expert technical support

- Replacement or refund for products not performing as stated on the datasheet
- Valid for 12 months from date of delivery
- Response to your inquiry within 24 hours

- We provide support in Chinese, English, French, German, Japanese and Spanish
- Extensive multi-media technical resources to help you
- We investigate all quality concerns to ensure our products perform to the highest standards

If the product does not perform as described on this datasheet, we will offer a refund or replacement. For full details of the Abpromise, please visit <https://www.abcam.com/abpromise> or contact our technical team.

Terms and conditions

- Guarantee only valid for products bought direct from Abcam or one of our authorized distributors