


Product datasheet

Anti-CARD6 antibody [EPR9718] α b151560

Recombinant **RabMAb**

[1 References](#) [3 Images](#)

Overview

Product name	Anti-CARD6 antibody [EPR9718]
Description	Rabbit monoclonal [EPR9718] to CARD6
Host species	Rabbit
Tested applications	Suitable for: Flow Cyt (Intra), WB Unsuitable for: ICC/IF, IHC-P or IP
Species reactivity	Reacts with: Human Predicted to work with: Mouse, Rat 
Immunogen	Synthetic peptide within Human CARD6 aa 150-250. The exact sequence is proprietary.
Positive control	MCF7, HeLa, Human fetal brain, 293T and Human fetal kidney lysates; HeLa cells.
General notes	<p>This product is a recombinant monoclonal antibody, which offers several advantages including:</p> <ul style="list-style-type: none"> - High batch-to-batch consistency and reproducibility - Improved sensitivity and specificity - Long-term security of supply - Animal-free production <p>For more information see here.</p> <p>Our RabMAb[®] technology is a patented hybridoma-based technology for making rabbit monoclonal antibodies. For details on our patents, please refer to RabMAb[®] patents.</p>

Properties

Form	Liquid
Storage instructions	Shipped at 4°C. Store at -20°C.
Storage buffer	pH: 7.2 Preservative: 0.01% Sodium azide Constituents: 9% PBS, 40% Glycerol (glycerin, glycerine), 0.05% BSA, 50% Tissue culture supernatant
Purity	Tissue culture supernatant
Clonality	Monoclonal
Clone number	EPR9718

Isotype

IgG

Applications

The Abpromise guarantee

Our **Abpromise guarantee** covers the use of ab151560 in the following tested applications.

The application notes include recommended starting dilutions; optimal dilutions/concentrations should be determined by the end user.

Application	Abreviews	Notes
Flow Cyt (Intra)		1/10 - 1/100. ab172730 - Rabbit monoclonal IgG, is suitable for use as an isotype control with this antibody.
WB		1/1000 - 1/10000. Predicted molecular weight: 116 kDa.

Application notes

Is unsuitable for ICC/IF, IHC-P or IP.

Target

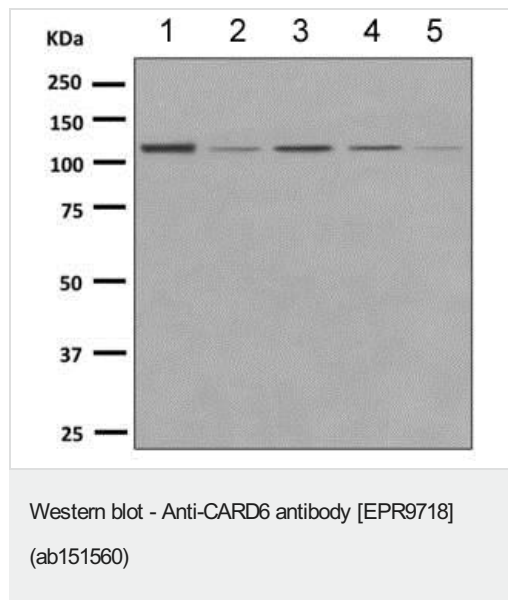
Function

May be involved in apoptosis.

Sequence similarities

Contains 1 CARD domain.

Images



All lanes : Anti-CARD6 antibody [EPR9718] (ab151560) at 1/1000 dilution

Lane 1 : MCF7 lysate

Lane 2 : HeLa lysate

Lane 3 : Human fetal brain lysate

Lane 4 : 293T lysate

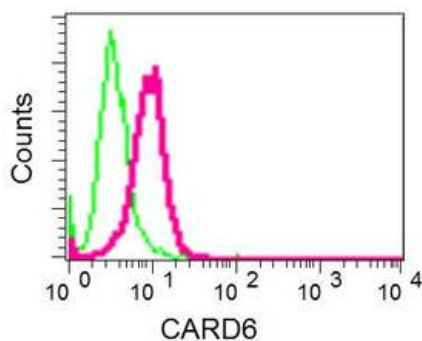
Lane 5 : Human fetal kidney lysate

Lysates/proteins at 10 µg per lane.

Secondary

All lanes : Goat anti-rabbit HRP at 1/2000 dilution

Predicted band size: 116 kDa



Intracellular flow cytometric analysis of permeabilized HeLa cells labeling CARD6 with ab151560 at 1/10 dilution (red), compared to a Rabbit IgG control antibody (green).

Flow Cytometry (Intracellular) - Anti-CARD6 antibody
[EPR9718] (ab151560)

Why choose a recombinant antibody?



Research with confidence
Consistent and reproducible results



Long-term and scalable supply
Recombinant technology



Success from the first experiment
Confirmed specificity



Ethical standards compliant
Animal-free production

Anti-CARD6 antibody [EPR9718] (ab151560)

Please note: All products are "FOR RESEARCH USE ONLY. NOT FOR USE IN DIAGNOSTIC PROCEDURES"

Our Abpromise to you: Quality guaranteed and expert technical support

- Replacement or refund for products not performing as stated on the datasheet
- Valid for 12 months from date of delivery
- Response to your inquiry within 24 hours
- We provide support in Chinese, English, French, German, Japanese and Spanish
- Extensive multi-media technical resources to help you
- We investigate all quality concerns to ensure our products perform to the highest standards

If the product does not perform as described on this datasheet, we will offer a refund or replacement. For full details of the Abpromise, please visit <https://www.abcam.com/abpromise> or contact our technical team.

Terms and conditions

- Guarantee only valid for products bought direct from Abcam or one of our authorized distributors