

## Product datasheet

# Anti-CARD8 antibody ab24186

★★★★☆ [4 Abreviews](#) [10 References](#) [4 Images](#)

### Overview

---

<b>Product name</b>	Anti-CARD8 antibody
<b>Description</b>	Rabbit polyclonal to CARD8
<b>Host species</b>	Rabbit
<b>Specificity</b>	ab24186 reacts with CARD8 (CARDINAL/TUCAN) protein.
<b>Tested applications</b>	<b>Suitable for:</b> ICC/IF, WB
<b>Species reactivity</b>	<b>Reacts with:</b> Human
<b>Immunogen</b>	Synthetic peptide corresponding to amino acids within the last 50 amino acids of the C terminus of human CARD8, GenBank accession AAG50014
<b>General notes</b>	<p>The Life Science industry has been in the grips of a reproducibility crisis for a number of years. Abcam is leading the way in addressing this with our range of recombinant monoclonal antibodies and knockout edited cell lines for gold-standard validation. Please check that this product meets your needs before purchasing.</p> <p>If you have any questions, special requirements or concerns, please send us an inquiry and/or contact our Support team ahead of purchase. Recommended alternatives for this product can be found below, along with publications, customer reviews and Q&amp;As</p>

### Properties

---

<b>Form</b>	Liquid
<b>Storage instructions</b>	Shipped at 4°C. Store at +4°C short term (1-2 weeks). Store at -20°C. Stable for 12 months at -20°C.
<b>Storage buffer</b>	pH: 7.2 Preservative: 0.02% Sodium azide
<b>Purity</b>	Immunogen affinity purified
<b>Clonality</b>	Polyclonal
<b>Isotype</b>	IgG

### Applications

---

**The Abpromise guarantee** Our **Abpromise guarantee** covers the use of ab24186 in the following tested applications.

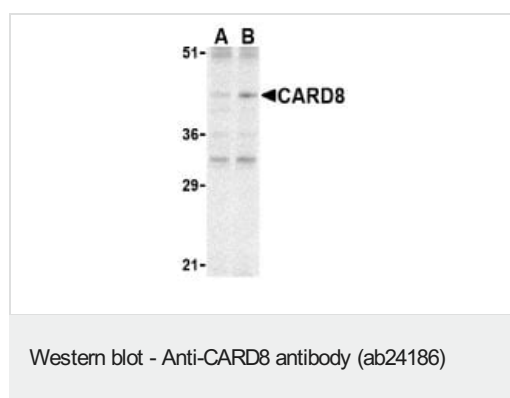
The application notes include recommended starting dilutions; optimal dilutions/concentrations should be determined by the end user.

Application	Abreviews	Notes
ICC/IF	★★★★★ (1)	Use a concentration of 10 µg/ml.
WB	★★★★★ (1)	Use a concentration of 2 µg/ml. Detects a band of approximately 45 kDa (predicted molecular weight: 49 kDa).

## Target

<b>Function</b>	Inhibits NF-kappa-B activation. May participate in a regulatory mechanism that coordinates cellular responses controlled by NF-kappa-B transcription factor. May be a component of the inflammasome, a protein complex which also includes PYCARD, NALP2 and CASP1 and whose function would be the activation of proinflammatory caspases.
<b>Tissue specificity</b>	High expression in lung, ovary, testis and placenta. Lower expression in heart, kidney and liver. Also expressed in spleen, lymph node and bone marrow.
<b>Sequence similarities</b>	Contains 1 CARD domain.
<b>Cellular localization</b>	Cytoplasm. Nucleus.

## Images



**Lane 1 :** Anti-CARD8 antibody (ab24186) at 2 µg/ml (CARD8 expression in K562 cell lysate)

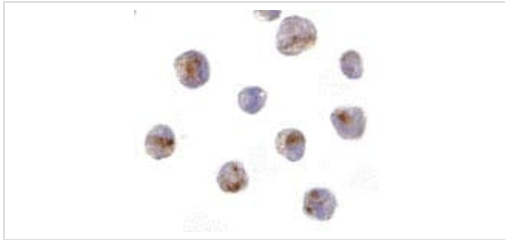
**Lane 2 :** Anti-CARD8 antibody (ab24186) at 4 µg/ml (CARD8 expression in K562 cell lysate)

**All lanes :**

**Predicted band size:** 49 kDa

**Observed band size:** 45 kDa

A peptide blocking study was also done (data not shown) and the only bands that disappeared were around 45kDa. The other bands are thought to be non-specific, but more testing to confirm or refute this has not been performed.



Immunocytochemistry/ Immunofluorescence - Anti-CARD8 antibody (ab24186)

ab24186 at 10µg/ml staining CARD8 in K562 cells by ICC/IF

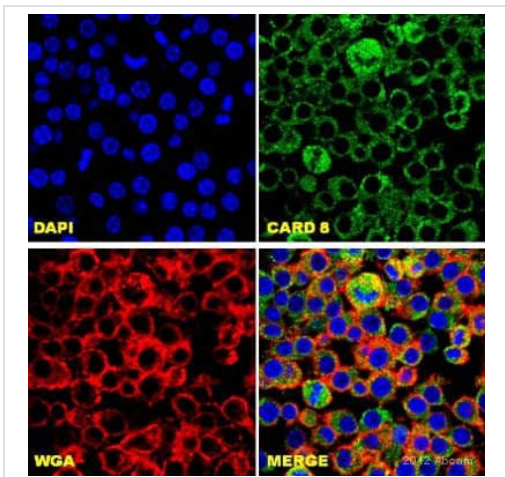


Immunocytochemistry/ Immunofluorescence - Anti-CARD8 antibody (ab24186)

Image courtesy of Dr Mahesh Shivananjappa by Abreview.

ab24186 staining CARD8 in human monocytes by Immunocytochemistry/ Immunofluorescence.

Cells were fixed, permeabilized, blocked with 2% BSA for 30 minutes at 25°C and then incubated with ab24186 at a 1/200 dilution for 4 hours at 25°C. The secondary used was an Alexa-Fluor 488 conjugated chicken anti-rabbit IgG (H+L) used at a 1/1000 dilution.



Immunocytochemistry/ Immunofluorescence - Anti-CARD8 antibody (ab24186)

This image is courtesy of an Abreview submitted by Dr Mahesh Shivananjappa

ab24186 staining CARD8 in Mouse RAW 264.7 cells by ICC/IF (Immunocytochemistry/immunofluorescence). Cells were fixed with paraformaldehyde, permeabilized with 0.1% Triton X-100 in 2% BSA and blocked with 2% serum for 1 hour at 22°C. Samples were incubated with primary antibody (1/200 in PBS + 2% BSA) for 18 hours at 4°C. An Alexa Fluor®488-conjugated Chicken anti-rabbit IgG polyclonal (1/750) was used as the secondary antibody. WGA = Wheat Germ Agglutinin

**Please note:** All products are "FOR RESEARCH USE ONLY. NOT FOR USE IN DIAGNOSTIC PROCEDURES"

### Our Abpromise to you: Quality guaranteed and expert technical support

- Replacement or refund for products not performing as stated on the datasheet
- Valid for 12 months from date of delivery
- Response to your inquiry within 24 hours
- We provide support in Chinese, English, French, German, Japanese and Spanish

- Extensive multi-media technical resources to help you
- We investigate all quality concerns to ensure our products perform to the highest standards

If the product does not perform as described on this datasheet, we will offer a refund or replacement. For full details of the Abpromise, please visit <https://www.abcam.com/abpromise> or contact our technical team.

### **Terms and conditions**

---

- Guarantee only valid for products bought direct from Abcam or one of our authorized distributors