


Product datasheet

Anti-CARD9 antibody ab115578

[1 References](#) [1 Image](#)

Overview

Product name	Anti-CARD9 antibody
Description	Rabbit polyclonal to CARD9
Host species	Rabbit
Tested applications	Suitable for: IHC-P
Species reactivity	Reacts with: Human Predicted to work with: Mouse, Rat, Horse, Dog 
Immunogen	Synthetic peptide: DRENTGSDNTDTEGS conjugated to KLH, corresponding to amino acids 521-536 of Human CARD9 (NP_434700.2). Run BLAST with Run BLAST with
Positive control	Human adrenal tissue.
General notes	<p>The Life Science industry has been in the grips of a reproducibility crisis for a number of years. Abcam is leading the way in addressing this with our range of recombinant monoclonal antibodies and knockout edited cell lines for gold-standard validation. Please check that this product meets your needs before purchasing.</p> <p>If you have any questions, special requirements or concerns, please send us an inquiry and/or contact our Support team ahead of purchase. Recommended alternatives for this product can be found below, along with publications, customer reviews and Q&As</p>

Properties

Form	Liquid
Storage instructions	Shipped at 4°C. Store at -80°C.
Storage buffer	pH: 7.4 Preservative: 0.02% Sodium azide Constituent: 99% PBS
Purity	Protein A purified
Clonality	Polyclonal
Isotype	IgG

Applications

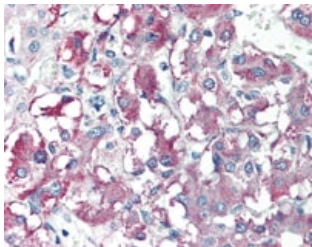
The Abpromise guarantee Our **Abpromise guarantee** covers the use of ab115578 in the following tested applications. The application notes include recommended starting dilutions; optimal dilutions/concentrations should be determined by the end user.

Application	Abreviews	Notes
IHC-P		Use a concentration of 10 µg/ml. Perform heat mediated antigen retrieval with citrate buffer pH 6 before commencing with IHC staining protocol.

Target

Function	Activates NF-kappa-B via BCL10.
Tissue specificity	Highly expressed in spleen. Also detected in liver, placenta, lung, peripheral blood leukocytes and in brain.
Involvement in disease	Defects in CARD9 are the cause of familial candidiasis type 2 (CANDF2) [MIM:212050]. Chronic mucocutaneous candidiasis is characterized by impaired clearance of fungal infections and results in colonization and infections of the mucosa or skin, predominantly with <i>Candida albicans</i> . CANDF2 is an autosomal recessive chronic mucocutaneous candidiasis.
Sequence similarities	Contains 1 CARD domain.
Cellular localization	Cytoplasm.

Images



ab115578, at 10µg/ml, staining CARD9 in Formalin-fixed, Paraffin-embedded Human Adrenal tissue by Immunohistochemistry followed by biotinylated secondary antibody, alkaline phosphatase-streptavidin and chromogen.

Immunohistochemistry (Formalin/PFA-fixed paraffin-embedded sections) - Anti-CARD9 antibody (ab115578)

Please note: All products are "FOR RESEARCH USE ONLY. NOT FOR USE IN DIAGNOSTIC PROCEDURES"

Our Abpromise to you: Quality guaranteed and expert technical support

- Replacement or refund for products not performing as stated on the datasheet
- Valid for 12 months from date of delivery
- Response to your inquiry within 24 hours

- We provide support in Chinese, English, French, German, Japanese and Spanish
- Extensive multi-media technical resources to help you
- We investigate all quality concerns to ensure our products perform to the highest standards

If the product does not perform as described on this datasheet, we will offer a refund or replacement. For full details of the Abpromise, please visit <https://www.abcam.com/abpromise> or contact our technical team.

Terms and conditions

- Guarantee only valid for products bought direct from Abcam or one of our authorized distributors