

Product datasheet

Anti-CARD9 antibody [EPR6489] ab133560

Recombinant RabMAb

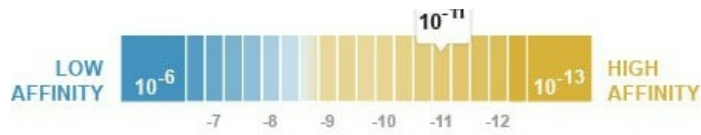
[2 References](#) [5 Images](#)

Overview

Product name	Anti-CARD9 antibody [EPR6489]
Description	Rabbit monoclonal [EPR6489] to CARD9
Host species	Rabbit
Tested applications	Suitable for: WB Unsuitable for: ICC/IF, IHC-P or IP
Species reactivity	Reacts with: Human
Immunogen	Synthetic peptide within Human CARD9 aa 450-550. The exact sequence is proprietary.
Positive control	WB: K562, U937, HL60, HepG2, and THP1 cell lysates
General notes	<p>This product is a recombinant monoclonal antibody, which offers several advantages including:</p> <ul style="list-style-type: none">- High batch-to-batch consistency and reproducibility- Improved sensitivity and specificity- Long-term security of supply- Animal-free production <p>For more information see here.</p> <p>Our RabMAb[®] technology is a patented hybridoma-based technology for making rabbit monoclonal antibodies. For details on our patents, please refer to RabMAb[®] patents.</p> <p>We are constantly working hard to ensure we provide our customers with best in class antibodies. As a result of this work we are pleased to now offer this antibody in purified format. We are in the process of updating our datasheets. The purified format is designated 'PUR' on our product labels. If you have any questions regarding this update, please contact our Scientific Support team.</p> <p>Mouse, Rat: We have preliminary internal testing data to indicate this antibody may not react with these species. Please contact us for more information.</p>

Properties

Form	Liquid
Storage instructions	Shipped at 4°C. Store at -20°C. Stable for 12 months at -20°C.
Dissociation constant (K_D)	K _D = 2.12 x 10 ⁻¹¹ M



[Learn more about \$K_D\$](#)

Storage buffer	pH: 7.2 Preservative: 0.01% Sodium azide Constituents: 59% PBS, 40% Glycerol (glycerin, glycerine), 0.05% BSA
Purity	Protein A purified
Clonality	Monoclonal
Clone number	EPR6489
Isotype	IgG

Applications

The Abpromise guarantee Our **Abpromise guarantee** covers the use of ab133560 in the following tested applications. The application notes include recommended starting dilutions; optimal dilutions/concentrations should be determined by the end user.

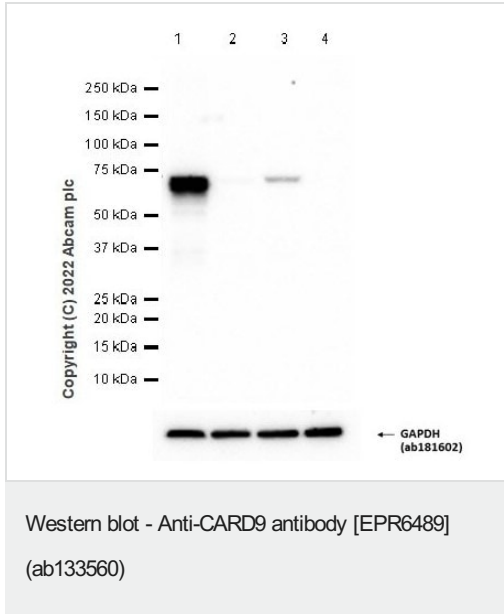
Application	Abreviews	Notes
WB		1/1000 - 1/10000. Predicted molecular weight: 62 kDa.

Application notes Is unsuitable for ICC/IF, IHC-P or IP.

Target

Function	Activates NF-kappa-B via BCL10.
Tissue specificity	Highly expressed in spleen. Also detected in liver, placenta, lung, peripheral blood leukocytes and in brain.
Involvement in disease	Defects in CARD9 are the cause of familial candidiasis type 2 (CANDF2) [MIM:212050]. Chronic mucocutaneous candidiasis is characterized by impaired clearance of fungal infections and results in colonization and infections of the mucosa or skin, predominantly with <i>Candida albicans</i> . CANDF2 is an autosomal recessive chronic mucocutaneous candidiasis.
Sequence similarities	Contains 1 CARD domain.
Cellular localization	Cytoplasm.

Images



All lanes : Anti-CARD9 antibody [EPR6489] (ab133560) at 1/1000 dilution

Lane 1 : THP-1 (Human monocytic leukemia monocyte) whole cell lysate

Lane 2 : 293T (Human embryonic kidney epithelial cell) whole cell lysate

Lane 3 : A549 (Human lung carcinoma epithelial cell) whole cell lysate

Lane 4 : NCI-H1299 (Human lung carcinoma epithelial cell) whole cell lysate

Lysates/proteins at 20 µg per lane.

Secondary

All lanes : Goat Anti-Rabbit IgG H&L (HRP) (**ab97051**) at 1/20000 dilution

Predicted band size: 62 kDa

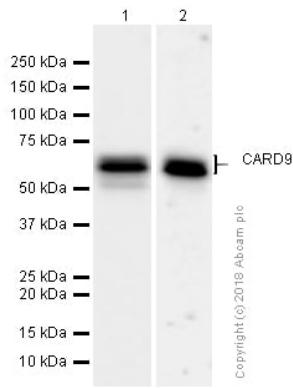
Observed band size: 52-62 kDa

Exposure time: 5 seconds

Blocking buffer and concentration: 5% NFDm/TBST

Diluting buffer and concentration: 5% NFDm/TBST

293T, A549 and NCI-H1299 are low expressors (PMID:32164050, PMID:33558980).



Western blot - Anti-CARD9 antibody [EPR6489] (ab133560)

All lanes : Anti-CARD9 antibody [EPR6489] (ab133560) at 1/5000 dilution (Purified)

Lane 1 : K-562 (Human chronic myelogenous leukemia lymphoblast) whole cell lysates

Lane 2 : THP-1 (Human monocytic leukemia monocyte) whole cell lysates

Lysates/proteins at 15 µg per lane.

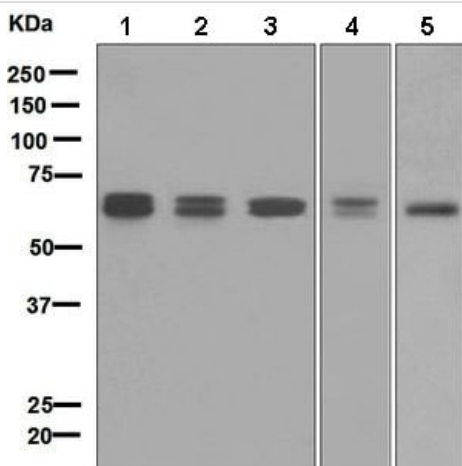
Secondary

All lanes : Goat Anti-Rabbit IgG H&L (HRP) ([ab97051](#)) at 1/20000 dilution

Predicted band size: 62 kDa

Observed band size: 52-62 kDa

This antibody recognizes 2 isoforms



Western blot - Anti-CARD9 antibody [EPR6489] (ab133560)

All lanes : Anti-CARD9 antibody [EPR6489] (ab133560) at 1/1000 dilution (Unpurified)

Lane 1 : K562 cell lysate

Lane 2 : U937 cell lysate

Lane 3 : HL60 cell lysate

Lane 4 : HepG2 cell lysate

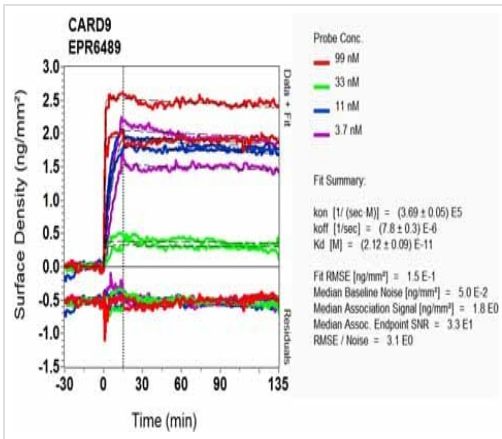
Lane 5 : THP1 cell lysate

Lysates/proteins at 10 µg per lane.

Secondary

All lanes : HRP labelled goat anti-rabbit at 1/2000 dilution

Predicted band size: 62 kDa



OI-RD Scanning - Anti-CARD9 antibody [EPR6489]
(ab133560)

Equilibrium disassociation constant (K_D)

Learn more about K_D

[Click here to learn more about \$K_D\$](#)

Why choose a recombinant antibody?

Research with confidence
Consistent and reproducible results

Long-term and scalable supply
Recombinant technology

Success from the first experiment
Confirmed specificity

Ethical standards compliant
Animal-free production

Anti-CARD9 antibody [EPR6489] (ab133560)

Please note: All products are "FOR RESEARCH USE ONLY. NOT FOR USE IN DIAGNOSTIC PROCEDURES"

Our Abpromise to you: Quality guaranteed and expert technical support

- Replacement or refund for products not performing as stated on the datasheet
- Valid for 12 months from date of delivery
- Response to your inquiry within 24 hours
- We provide support in Chinese, English, French, German, Japanese and Spanish
- Extensive multi-media technical resources to help you
- We investigate all quality concerns to ensure our products perform to the highest standards

If the product does not perform as described on this datasheet, we will offer a refund or replacement. For full details of the Abpromise, please visit <https://www.abcam.com/abpromise> or contact our technical team.

Terms and conditions

- Guarantee only valid for products bought direct from Abcam or one of our authorized distributors