


Product datasheet

Anti-Casein Kinase 1 gamma 2 antibody ab64829

★★★★☆ [1 Abreviews](#) [6 References](#) [2 Images](#)

Overview

Product name	Anti-Casein Kinase 1 gamma 2 antibody
Description	Rabbit polyclonal to Casein Kinase 1 gamma 2
Host species	Rabbit
Tested applications	Suitable for: WB
Species reactivity	Reacts with: Human Predicted to work with: Mouse, Rat 
Immunogen	Synthetic peptide derived from N-terminus of human Casein Kinase 1 gamma 2.
Positive control	HeLa and 293 cell extracts.
General notes	<p>The Life Science industry has been in the grips of a reproducibility crisis for a number of years. Abcam is leading the way in addressing this with our range of recombinant monoclonal antibodies and knockout edited cell lines for gold-standard validation. Please check that this product meets your needs before purchasing.</p> <p>If you have any questions, special requirements or concerns, please send us an inquiry and/or contact our Support team ahead of purchase. Recommended alternatives for this product can be found below, along with publications, customer reviews and Q&As</p>

Properties

Form	Liquid
Storage instructions	Shipped at 4°C. Store at -20°C. Stable for 12 months at -20°C.
Storage buffer	pH: 7.40 Preservative: 0.02% Sodium azide Constituents: PBS, 50% Glycerol (glycerin, glycerine), 0.87% Sodium chloride
Purity	Immunogen affinity purified
Clonality	Polyclonal
Isotype	IgG

Applications

The Abpromise guarantee Our **Abpromise guarantee** covers the use of ab64829 in the following tested applications.

The application notes include recommended starting dilutions; optimal dilutions/concentrations should be determined by the end user.

Application	Abreviews	Notes
WB	★★★★☆ (1)	1/500 - 1/1000. Detects a band of approximately 47 kDa (predicted molecular weight: 47 kDa).

Target

Function

Serine/threonine-protein kinase. Casein kinases are operationally defined by their preferential utilization of acidic proteins such as caseins as substrates. It can phosphorylate a large number of proteins. Participates in Wnt signaling (By similarity). Phosphorylates COL4A3BP/CERT, MTA1 and SMAD3. Involved in brain development and vesicular trafficking and neurotransmitter releasing from small synaptic vesicles. Regulates fast synaptic transmission mediated by glutamate. SMAD3 phosphorylation promotes its ligand-dependent ubiquitination and subsequent proteasome degradation, thus inhibiting SMAD3-mediated TGF-beta responses. Hyperphosphorylation of the serine-repeat motif of COL4A3BP/CERT leads to its inactivation by dissociation from the Golgi complex, thus down-regulating ER-to-Golgi transport of ceramide and sphingomyelin synthesis.

Tissue specificity

Testis.

Sequence similarities

Belongs to the protein kinase superfamily. CK1 Ser/Thr protein kinase family. Casein kinase I subfamily.

Contains 1 protein kinase domain.

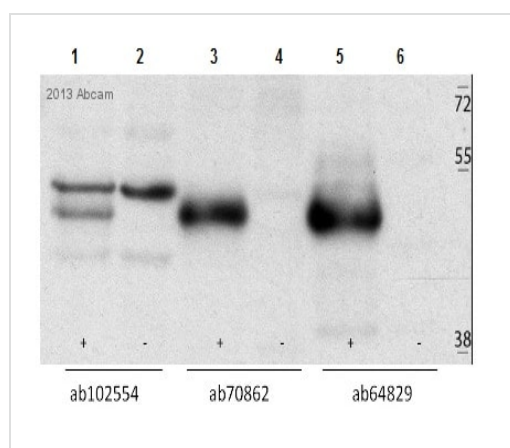
Post-translational modifications

Autophosphorylated.

Cellular localization

Cytoplasm.

Images



Lanes 1-2 : Anti-Casein Kinase 1 gamma 2 antibody ([ab102554](#))

Lanes 3-4 : Anti-Casein Kinase 1 gamma 2 antibody ([ab70862](#))

Lanes 5-6 : Anti-Casein Kinase 1 gamma 2 antibody ([ab64829](#)) at 1/500 dilution

Lanes 1 & 3 & 5 : U2OS cells expressing FLAG-tagged CK1G2 plasmid

Lane 2 : U2OS cells expressing FLAG tag only plasmid

Lanes 4 & 6 : U2OS cells expressing FLAG only

Secondary

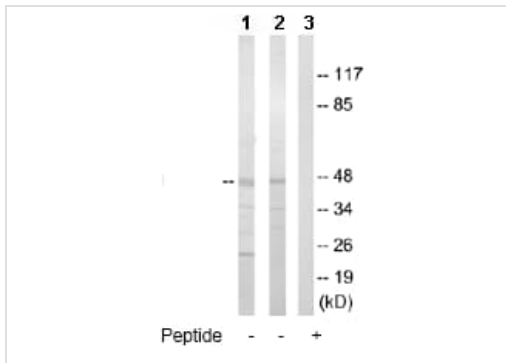
Lanes 5-6 : HRP-conjugated Goat anti-rabbit polyclonal at 1/1000 dilution

Western blot - Anti-Casein Kinase 1 gamma 2 antibody ([ab64829](#))

This image is courtesy of an anonymous Abreview

Developed using the ECL technique.

Predicted band size: 47 kDa



Western blot - Anti-Casein Kinase 1 gamma 2 antibody (ab64829)

All lanes : Anti-Casein Kinase 1 gamma 2 antibody (ab64829) at 1/500 dilution

Lane 1 : HeLa cell extract

Lane 2 : 293 cell extract

Lane 3 : 293 cell extract with immunising peptide at 10 µg

Lysates/proteins at 30 µg per lane.

Predicted band size: 47 kDa

Observed band size: 47 kDa

Additional bands at: 25 kDa, 34 kDa. We are unsure as to the identity of these extra bands.

Please note: All products are "FOR RESEARCH USE ONLY. NOT FOR USE IN DIAGNOSTIC PROCEDURES"

Our Abpromise to you: Quality guaranteed and expert technical support

- Replacement or refund for products not performing as stated on the datasheet
- Valid for 12 months from date of delivery
- Response to your inquiry within 24 hours
- We provide support in Chinese, English, French, German, Japanese and Spanish
- Extensive multi-media technical resources to help you
- We investigate all quality concerns to ensure our products perform to the highest standards

If the product does not perform as described on this datasheet, we will offer a refund or replacement. For full details of the Abpromise, please visit <https://www.abcam.com/abpromise> or contact our technical team.

Terms and conditions

- Guarantee only valid for products bought direct from Abcam or one of our authorized distributors