


## Product datasheet

# Anti-Casein Kinase 2 beta antibody [EP1995Y] ab76025

Recombinant RabMAb

★★★★★ **6 Abreviews** **18 References** [5 Images](#)

### Overview

<b>Product name</b>	Anti-Casein Kinase 2 beta antibody [EP1995Y]
<b>Description</b>	Rabbit monoclonal [EP1995Y] to Casein Kinase 2 beta
<b>Host species</b>	Rabbit
<b>Tested applications</b>	<b>Suitable for:</b> WB, IHC-P, ICC/IF, Flow Cyt (Intra) <b>Unsuitable for:</b> IP
<b>Species reactivity</b>	<b>Reacts with:</b> Horse, Human <b>Predicted to work with:</b> Mouse, Rat 
<b>Immunogen</b>	Synthetic peptide within Human Casein Kinase 2 beta aa 200-300 (C terminal). The exact sequence is proprietary.
<b>Positive control</b>	WB: K562 cell lysate ICC/IF: HeLa cells IHC-P: Human ovary carcinoma tissue
<b>General notes</b>	<p>This product is a recombinant monoclonal antibody, which offers several advantages including:</p> <ul style="list-style-type: none"> <li>- High batch-to-batch consistency and reproducibility</li> <li>- Improved sensitivity and specificity</li> <li>- Long-term security of supply</li> <li>- Animal-free production</li> </ul> <p>For more information <a href="#">see here</a>.</p> <p>Our RabMAb<sup>®</sup> technology is a patented hybridoma-based technology for making rabbit monoclonal antibodies. For details on our patents, please refer to <a href="#">RabMAb<sup>®</sup> patents</a>.</p>

### Properties

<b>Form</b>	Liquid
<b>Storage instructions</b>	Shipped at 4°C. Upon delivery aliquot and store at -20°C. Avoid repeated freeze / thaw cycles.
<b>Storage buffer</b>	pH: 7.20 Preservative: 0.05% Sodium azide Constituents: 40% Glycerol (glycerin, glycerine), 9.85% Tris glycine, 50% Tissue culture supernatant
<b>Purity</b>	Protein A purified
<b>Clonality</b>	Monoclonal

**Clone number** EP1995Y  
**Isotype** IgG

## Applications

**The Abpromise guarantee** Our **Abpromise guarantee** covers the use of ab76025 in the following tested applications.  
The application notes include recommended starting dilutions; optimal dilutions/concentrations should be determined by the end user.

Application	Abreviews	Notes
WB	★★★★★ (4)	1/500 - 1/2000. Predicted molecular weight: 25 kDa.
IHC-P	★★★★★ (1)	1/100 - 1/250. Perform heat mediated antigen retrieval before commencing with IHC staining protocol.
ICC/IF		1/100 - 1/250.
Flow Cyt (Intra)		1/20. <b>ab172730</b> - Rabbit monoclonal IgG, is suitable for use as an isotype control with this antibody.

**Application notes** Is unsuitable for IP.

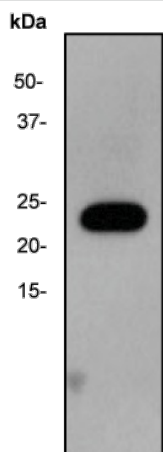
## Target

**Function** Participates in Wnt signaling (By similarity). Plays a complex role in regulating the basal catalytic activity of the alpha subunit.

**Sequence similarities** Belongs to the casein kinase 2 subunit beta family.

**Post-translational modifications** Phosphorylated by alpha subunit.

## Images



Western blot - Anti-Casein Kinase 2 beta antibody [EP1995Y] (ab76025)

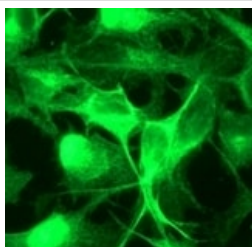
Anti-Casein Kinase 2 beta antibody [EP1995Y] (ab76025) at 1/1000 dilution + K562 cell lysate at 10 µg

### Secondary

HRP labelled goat anti-rabbit at 1/2000 dilution

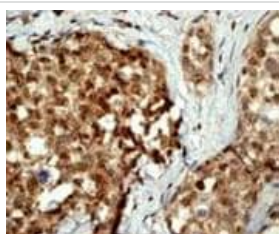
**Predicted band size:** 25 kDa

**Observed band size:** 25 kDa



Immunocytochemistry/ Immunofluorescence - Anti-Casein Kinase 2 beta antibody [EP1995Y] (ab76025)

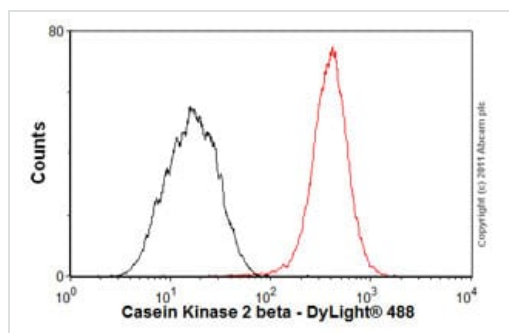
Immunofluorescent staining of Casein Kinase 2 beta in HeLa cells using ab76025 at a 1/100 dilution.



Immunohistochemistry (Formalin/PFA-fixed paraffin-embedded sections) - Anti-Casein Kinase 2 beta antibody [EP1995Y] (ab76025)

Immunohistochemical analysis of Casein Kinase 2 beta in paraffin embedded human ovary carcinoma tissue using ab76025 at a 1/100 dilution.

Perform heat mediated antigen retrieval before commencing with IHC staining protocol.



Flow Cytometry (Intracellular) - Anti-Casein Kinase 2 beta antibody [EP1995Y] (ab76025)

Overlay histogram showing HeLa cells stained with ab76025 (red line). The cells were fixed with 80% methanol (5 min) and then permeabilized with 0.1% PBS-Tween for 20 min. The cells were then incubated in 1x PBS / 10% normal goat serum / 0.3M glycine to block non-specific protein-protein interactions followed by the antibody (ab76025, 1/100 dilution) for 30 min at 22°C. The secondary antibody used was DyLight® 488 goat anti-rabbit IgG (H+L) ([ab96899](#)) at 1/500 dilution for 30 min at 22°C. Isotype control antibody (black line) was rabbit IgG (monoclonal) (1 µg/1x10<sup>6</sup> cells) used under the same conditions. Acquisition of >5,000 events was performed.

### Why choose a recombinant antibody?



**Research with confidence**  
Consistent and reproducible results



**Long-term and scalable supply**  
Recombinant technology



**Success from the first experiment**  
Confirmed specificity



**Ethical standards compliant**  
Animal-free production

Anti-Casein Kinase 2 beta antibody [EP1995Y]  
(ab76025)

**Please note:** All products are "FOR RESEARCH USE ONLY. NOT FOR USE IN DIAGNOSTIC PROCEDURES"

### Our Abpromise to you: Quality guaranteed and expert technical support

- Replacement or refund for products not performing as stated on the datasheet
- Valid for 12 months from date of delivery
- Response to your inquiry within 24 hours
- We provide support in Chinese, English, French, German, Japanese and Spanish
- Extensive multi-media technical resources to help you
- We investigate all quality concerns to ensure our products perform to the highest standards

If the product does not perform as described on this datasheet, we will offer a refund or replacement. For full details of the Abpromise, please visit <https://www.abcam.com/abpromise> or contact our technical team.

### Terms and conditions

- Guarantee only valid for products bought direct from Abcam or one of our authorized distributors