

Product datasheet

Anti-Casein Kinase 2 beta (phospho S209) antibody ab12861

[1 Image](#)

Overview

Product name	Anti-Casein Kinase 2 beta (phospho S209) antibody
Description	Rabbit polyclonal to Casein Kinase 2 beta (phospho S209)
Host species	Rabbit
Specificity	Does not cross react with Casein Kinase 2 alpha [pS ³⁶⁰] (mouse), [pS ³⁶²], [pS ³⁷⁰], or Casein Kinase 2 beta pS ² .
Tested applications	Suitable for: WB
Species reactivity	Reacts with: Human
Immunogen	Synthetic peptide. This information is proprietary to Abcam and/or its suppliers.
Positive control	HeLa cell lysates or K562 cell lysates.
General notes	<p>The Life Science industry has been in the grips of a reproducibility crisis for a number of years. Abcam is leading the way in addressing this with our range of recombinant monoclonal antibodies and knockout edited cell lines for gold-standard validation. Please check that this product meets your needs before purchasing.</p> <p>If you have any questions, special requirements or concerns, please send us an inquiry and/or contact our Support team ahead of purchase. Recommended alternatives for this product can be found below, along with publications, customer reviews and Q&As</p>

Properties

Form	Liquid
Storage instructions	Shipped at 4°C. Store at +4°C short term (1-2 weeks). Upon delivery aliquot. Store at -20°C or -80°C. Avoid freeze / thaw cycle.
Storage buffer	<p>pH: 7.3</p> <p>Preservative: 0.05% Sodium azide</p> <p>Constituents: PBS, 50% Glycerol (glycerin, glycerine), 0.1% BSA</p>
Purity	Immunogen affinity purified
Purification notes	Purified from rabbit serum by sequential epitope-specific chromatography. The antibody has been negatively preadsorbed using a non-phosphopeptide corresponding to the site of phosphorylation to remove antibody that is reactive with non-phosphorylated Casein Kinase 2

beta. The final product is generated by affinity chromatography using a Casein Kinase 2 beta derived peptide that is phosphorylated at serine 209.

Clonality

Polyclonal

Isotype

IgG

Applications

The Abpromise guarantee

Our **Abpromise guarantee** covers the use of ab12861 in the following tested applications.

The application notes include recommended starting dilutions; optimal dilutions/concentrations should be determined by the end user.

Application	Abreviews	Notes
WB		

Application notes

WB: 1/1000 in 3% milk in 0.1% Tween20 (TBST). Incubate overnight. Detects a band of approximately 25 kDa. Block 1hr with 3% milk in 0.1% Tween20 (TBST).

Not tested in other applications.

Optimal dilutions/concentrations should be determined by the end user.

Target

Function

Participates in Wnt signaling (By similarity). Plays a complex role in regulating the basal catalytic activity of the alpha subunit.

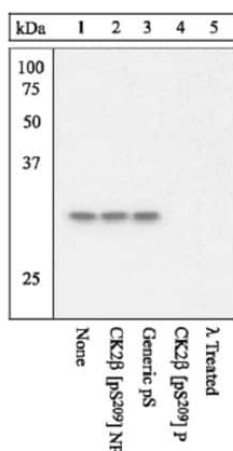
Sequence similarities

Belongs to the casein kinase 2 subunit beta family.

Post-translational modifications

Phosphorylated by alpha subunit.

Images



Western blot - Anti-Casein Kinase 2 beta (phospho S209) antibody (ab12861)

Peptide Competition and Phosphatase Treatment

Lysates prepared from HeLa cells were resolved by SDS-PAGE on a 14% polyacrylamide gel and transferred to PVDF. Membranes were either left untreated (1-4) or treated with lambda phosphatase (5), blocked with a 3% Milk-TBST buffer for one hour at room temperature, and incubated with ab12861 antibody for two hours at room temperature in a 3% Milk-TBST buffer, following prior incubation with: no peptide (1, 5), the non-phosphopeptide corresponding to the immunogen (2), a generic phosphoserine-containing peptide (3), or, the phosphopeptide immunogen (4). After washing, membranes were incubated with goat F(ab)2 anti-rabbit IgG HRP conjugate and bands were detected using the Pierce SuperSignal method.

The data show that only the peptide corresponding to ab12861

blocks the signal, verifying the specificity of the antibody.

Peptide Competition and Phosphatase Treatment

Please note: All products are "FOR RESEARCH USE ONLY. NOT FOR USE IN DIAGNOSTIC PROCEDURES"

Our Abpromise to you: Quality guaranteed and expert technical support

- Replacement or refund for products not performing as stated on the datasheet
- Valid for 12 months from date of delivery
- Response to your inquiry within 24 hours
- We provide support in Chinese, English, French, German, Japanese and Spanish
- Extensive multi-media technical resources to help you
- We investigate all quality concerns to ensure our products perform to the highest standards

If the product does not perform as described on this datasheet, we will offer a refund or replacement. For full details of the Abpromise, please visit <https://www.abcam.com/abpromise> or contact our technical team.

Terms and conditions

- Guarantee only valid for products bought direct from Abcam or one of our authorized distributors