

Anti-Caspase-12 antibody ab62484

★★★★★ [8 Abreviews](#) [115 References](#) [4 Images](#)

Overview

Product name	Anti-Caspase-12 antibody
Description	Rabbit polyclonal to Caspase-12
Host species	Rabbit
Specificity	This antibody reacts with both the propeptide and cleaved forms of Caspase-12.
Tested applications	Suitable for: WB, IHC-P
Species reactivity	Reacts with: Rat, Human
Immunogen	Synthetic peptide corresponding to Mouse Caspase-12. immunogen sequence from within aa 181 to 240 Database link: O08736
Positive control	WB: Human heart lysate. Rat dorsal root ganglion. IHC-P: Human and rat heart tissue.
General notes	<p>The Life Science industry has been in the grips of a reproducibility crisis for a number of years. Abcam is leading the way in addressing this with our range of recombinant monoclonal antibodies and knockout edited cell lines for gold-standard validation. Please check that this product meets your needs before purchasing.</p> <p>If you have any questions, special requirements or concerns, please send us an inquiry and/or contact our Support team ahead of purchase. Recommended alternatives for this product can be found below, along with publications, customer reviews and Q&As</p>

Properties

Form	Liquid
Storage instructions	Shipped at 4°C. Store at +4°C short term (1-2 weeks). Upon delivery aliquot. Store at -20°C. Avoid freeze / thaw cycle.
Storage buffer	pH: 7.20 Preservative: 0.02% Sodium azide Constituent: PBS
Purity	Protein A purified
Purification notes	Caspase-12 Antibody is (Large)affinity chromatography purified via peptide column.
Clonality	Polyclonal
Isotype	IgG

Applications

The Abpromise guarantee

Our **Abpromise guarantee** covers the use of ab62484 in the following tested applications.

The application notes include recommended starting dilutions; optimal dilutions/concentrations should be determined by the end user.

Application	Abreviews	Notes
WB	★★★★★ (6)	Use a concentration of 0.5 - 2 µg/ml. Detects a band of approximately 46 kDa (predicted molecular weight: 46 kDa). This antibody will detect full length Casp12 (42 kDa) and also the cleaved active form (38 kDa) in the appropriate lysates.
IHC-P	★★★★★ (1)	Use a concentration of 2 µg/ml.

Target

Function

Has no protease activity. May reduce cytokine release in response to bacterial lipopolysaccharide during infections. Reduces activation of NF-kappa-B in response to TNF.

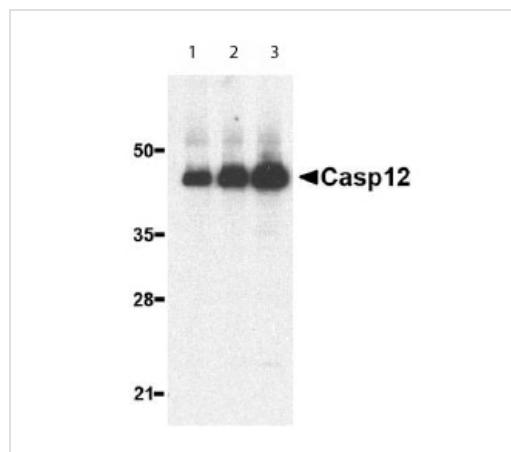
Tissue specificity

Detected in heart, kidney, liver, lung, pancreas, small intestine, spleen, stomach, thymus and testis.

Sequence similarities

Belongs to the peptidase C14A family.
Contains 1 CARD domain.

Images



Western blot - Anti-Caspase-12 antibody (ab62484)

Lane 1 : Anti-Caspase-12 antibody (ab62484) at 0.5 µg/ml

Lane 2 : Anti-Caspase-12 antibody (ab62484) at 1 µg/ml

Lane 3 : Anti-Caspase-12 antibody (ab62484) at 2 µg/ml

All lanes : Human heart lysate

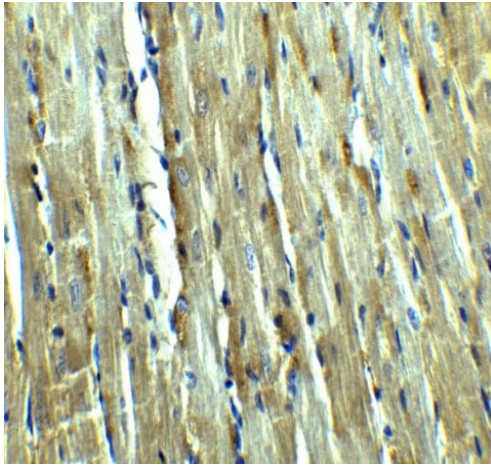
Lysates/proteins at 15 µg per lane.

Secondary

All lanes : Anti rabbit IgG secondary antibody

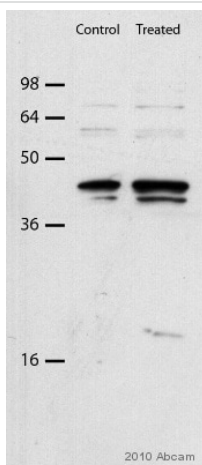
Predicted band size: 46 kDa

Observed band size: 46 kDa



Immunohistochemistry (Formalin/PFA-fixed paraffin-embedded sections) - Anti-Caspase-12 antibody (ab62484)

Immunohistochemical analysis of paraffin-embedded rat heart tissue stained for Caspase-12 using ab62484 at 2.5 µg/ml.



Western blot - Anti-Caspase-12 antibody (ab62484)

This image is courtesy of an abreview submitted by Karine Thibault, CNRS, Paris, France

All lanes : Anti-Caspase-12 antibody (ab62484) at 1/2000 dilution

Lane 1 : Rat dorsal root ganglion

Lane 2 : Treated rat dorsal root ganglion

Lysates/proteins at 15 µg per lane.

Secondary

All lanes : anti-rabbit HRP-linked secondary antibody at 1/10000 dilution

Developed using the ECL technique.

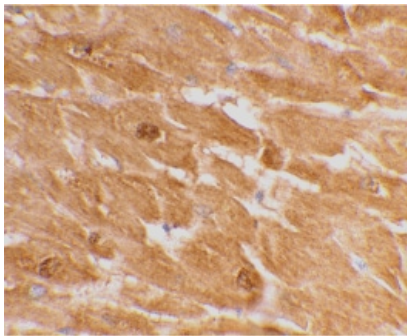
Performed under reducing conditions.

Predicted band size: 46 kDa

Observed band size: 40-45 kDa

Exposure time: 2 minutes

The full length Casp12 (42 kDa) observed in control rat was cleaved into an active form with a size of 38 kDa in treated rat



Paraffin-embedded human heart tissue stained for Caspase-12 using ab62484 at 2 µg/ml dilution in immunohistochemical analysis.

Immunohistochemistry (Formalin/PFA-fixed paraffin-embedded sections) - Anti-Caspase-12 antibody (ab62484)

Please note: All products are "FOR RESEARCH USE ONLY. NOT FOR USE IN DIAGNOSTIC PROCEDURES"

Our Abpromise to you: Quality guaranteed and expert technical support

- Replacement or refund for products not performing as stated on the datasheet
- Valid for 12 months from date of delivery
- Response to your inquiry within 24 hours
- We provide support in Chinese, English, French, German, Japanese and Spanish
- Extensive multi-media technical resources to help you
- We investigate all quality concerns to ensure our products perform to the highest standards

If the product does not perform as described on this datasheet, we will offer a refund or replacement. For full details of the Abpromise, please visit <https://www.abcam.com/abpromise> or contact our technical team.

Terms and conditions

- Guarantee only valid for products bought direct from Abcam or one of our authorized distributors