

## Product datasheet

# Anti-Caspase-2 antibody [Y154] ab32021

**KO VALIDATED** Recombinant RabMAB

[8 References](#) [3 Images](#)

### Overview

<b>Product name</b>	Anti-Caspase-2 antibody [Y154]
<b>Description</b>	Rabbit monoclonal [Y154] to Caspase-2
<b>Host species</b>	Rabbit
<b>Specificity</b>	This antibody is specific for the pro form and the p18 cleaved form of Caspase-2.
<b>Tested applications</b>	<b>Suitable for:</b> WB
<b>Species reactivity</b>	<b>Reacts with:</b> Human
<b>Immunogen</b>	Synthetic peptide within Human Caspase-2 aa 250-350 (C terminal). The exact sequence is proprietary. Database link: <a href="#">P42575</a>
<b>Positive control</b>	Jurkat cell lysate.
<b>General notes</b>	<p>This product is a recombinant monoclonal antibody, which offers several advantages including:</p> <ul style="list-style-type: none"><li>- High batch-to-batch consistency and reproducibility</li><li>- Improved sensitivity and specificity</li><li>- Long-term security of supply</li><li>- Animal-free production</li></ul> <p>For more information <a href="#">see here</a>.</p> <p>Our RabMAB<sup>®</sup> technology is a patented hybridoma-based technology for making rabbit monoclonal antibodies. For details on our patents, please refer to <a href="#">RabMAB<sup>®</sup> patents</a>.</p> <p>Mouse, Rat: We have preliminary internal testing data to indicate this antibody may not react with these species. Please contact us for more information.</p>

### Properties

<b>Form</b>	Liquid
<b>Storage instructions</b>	Shipped at 4°C. Store at +4°C short term (1-2 weeks). Upon delivery aliquot. Store at -20°C. Avoid freeze / thaw cycle.
<b>Storage buffer</b>	pH: 7.20 Preservative: 0.01% Sodium azide Constituents: 49% PBS, 50% Glycerol (glycerin, glycerine), 0.05% BSA

<b>Purity</b>	Protein A purified
<b>Clonality</b>	Monoclonal
<b>Clone number</b>	Y154
<b>Isotype</b>	IgG

## Applications

**The Abpromise guarantee** Our **Abpromise guarantee** covers the use of ab32021 in the following tested applications.

The application notes include recommended starting dilutions; optimal dilutions/concentrations should be determined by the end user.

Application	Abreviews	Notes
<b>WB</b>		1/500. Detects a band of approximately 50 kDa (predicted molecular weight: 49 kDa). Detects bands of approximately 50 kDa (pro form) and 18 kDa (p18 cleaved form).

## Target

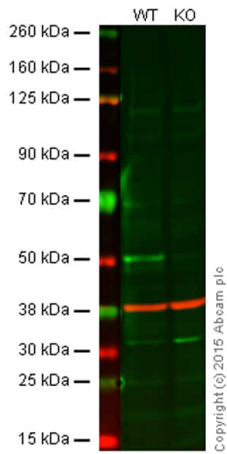
**Function** Involved in the activation cascade of caspases responsible for apoptosis execution. Might function by either activating some proteins required for cell death or inactivating proteins necessary for cell survival.

**Tissue specificity** Expressed at higher levels in the embryonic lung, liver and kidney than in the heart and brain. In adults, higher level expression is seen in the placenta, lung, kidney, and pancreas than in the heart, brain, liver and skeletal muscle.

**Sequence similarities** Belongs to the peptidase C14A family.  
Contains 1 CARD domain.

**Post-translational modifications** The mature protease can process its own propeptide, but not that of other caspases.

## Images



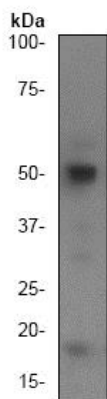
Western blot - Anti-Caspase-2 antibody [Y154]  
(ab32021)

**Lane 1:** Wild-type HAP1 cell lysate (20 µg)

**Lane 2:** Caspase 2 knockout HAP1 cell lysate (20 µg)

**Lanes 1 and 2:** Merged signal (red and green). Green - **ab182738** observed at 51 kDa. Red - loading control, **ab8226**, observed at 42 kDa.

ab32021 was shown to recognize caspase 2 when caspase 2 knockout samples were used, along with additional cross-reactive bands. Wild-type and caspase 2 knockout samples were subjected to SDS-PAGE. ab32021 and **ab8226** (loading control to beta actin) were diluted 1/50 and 1/1000 respectively and incubated overnight at 4°C. Blots were developed with Goat anti-Rabbit IgG H&L (IRDye® 800CW) preadsorbed **ab216773** and Goat anti-Mouse IgG H&L (IRDye® 680RD) preadsorbed **ab216776** secondary antibodies at 1/10000 dilution for 1 h at room temperature before imaging.



Western blot - Anti-Caspase-2 antibody [Y154]  
(ab32021)


Anti-Caspase-2 antibody [Y154] (ab32021) at 1/500 dilution + Jurkat (Human T cell leukemia cell line from peripheral blood) whole cell lysate

**Predicted band size:** 49 kDa

**Observed band size:** 50 kDa

**Additional bands at:** 18 kDa (possible cleavage fragment)

Why choose a recombinant antibody?



**Research with confidence**  
Consistent and reproducible results

**Long-term and scalable supply**  
Recombinant technology

**Success from the first experiment**  
Confirmed specificity

**Ethical standards compliant**  
Animal-free production

Anti-Caspase-2 antibody [Y154] (ab32021)

**Please note:** All products are "FOR RESEARCH USE ONLY. NOT FOR USE IN DIAGNOSTIC PROCEDURES"

### Our Abpromise to you: Quality guaranteed and expert technical support

---

- Replacement or refund for products not performing as stated on the datasheet
- Valid for 12 months from date of delivery
- Response to your inquiry within 24 hours
- We provide support in Chinese, English, French, German, Japanese and Spanish
- Extensive multi-media technical resources to help you
- We investigate all quality concerns to ensure our products perform to the highest standards

If the product does not perform as described on this datasheet, we will offer a refund or replacement. For full details of the Abpromise, please visit <https://www.abcam.com/abpromise> or contact our technical team.

### Terms and conditions

---

- Guarantee only valid for products bought direct from Abcam or one of our authorized distributors