


## Product datasheet

# Anti-Caspase-6/CASP-6 antibody [EP1325Y] ab52951

Recombinant RabMAb

[1 Abreviews](#) [5 Images](#)

### Overview

<b>Product name</b>	Anti-Caspase-6/CASP-6 antibody [EP1325Y]
<b>Description</b>	Rabbit monoclonal [EP1325Y] to Caspase-6/CASP-6
<b>Host species</b>	Rabbit
<b>Specificity</b>	ab52951 should recognize the pro-form of Caspase-6/CASP-6.
<b>Tested applications</b>	<b>Suitable for:</b> Flow Cyt (Intra), WB, IHC-P, ICC/IF
<b>Species reactivity</b>	<b>Reacts with:</b> Human <b>Predicted to work with:</b> Mouse, Rat 
<b>Immunogen</b>	Synthetic peptide within Human Caspase-6/CASP-6 aa 150-250. The exact sequence is proprietary. Database link: <a href="#">P55212</a>
<b>Positive control</b>	MCF-7 cell lysate, human breast carcinoma and HeLa cells.
<b>General notes</b>	This product is a recombinant monoclonal antibody, which offers several advantages including: <ul style="list-style-type: none"> <li>- High batch-to-batch consistency and reproducibility</li> <li>- Improved sensitivity and specificity</li> <li>- Long-term security of supply</li> <li>- Animal-free production</li> </ul> For more information <a href="#">see here</a> . Our RabMAb <sup>®</sup> technology is a patented hybridoma-based technology for making rabbit monoclonal antibodies. For details on our patents, please refer to <a href="#">RabMAb<sup>®</sup> patents</a> .

### Properties

<b>Form</b>	Liquid
<b>Storage instructions</b>	Shipped at 4°C. Store at +4°C short term (1-2 weeks). Upon delivery aliquot. Store at -20°C. Avoid freeze / thaw cycle.
<b>Storage buffer</b>	pH: 7.20 Preservative: 0.05% Sodium azide Constituents: 0.1% BSA, 40% Glycerol (glycerin, glycerine), 9.85% Tris glycine, 50% Tissue culture supernatant
<b>Purity</b>	Protein A purified

<b>Clonality</b>	Monoclonal
<b>Clone number</b>	EP1325Y
<b>Isotype</b>	IgG

## Applications

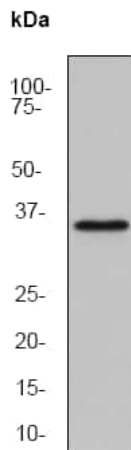
**The Abpromise guarantee** Our **Abpromise guarantee** covers the use of ab52951 in the following tested applications. The application notes include recommended starting dilutions; optimal dilutions/concentrations should be determined by the end user.

Application	Abreviews	Notes
<b>Flow Cyt (Intra)</b>		1/1000. <b>ab172730</b> - Rabbit monoclonal IgG, is suitable for use as an isotype control with this antibody.
<b>WB</b>		1/20000. Detects a band of approximately 34 kDa (predicted molecular weight: 34 kDa).
<b>IHC-P</b>		1/100 - 1/250. Perform heat mediated antigen retrieval with citrate buffer pH 6 before commencing with IHC staining protocol. Antigen retrieval recommended
<b>ICC/IF</b>		1/100 - 1/250.

## Target

<b>Function</b>	Involved in the activation cascade of caspases responsible for apoptosis execution. Cleaves poly(ADP-ribose) polymerase in vitro, as well as lamins. Overexpression promotes programmed cell death.
<b>Sequence similarities</b>	Belongs to the peptidase C14A family.
<b>Post-translational modifications</b>	Cleavages by caspase-3, caspase-8 or -10 generate the two active subunits.
<b>Cellular localization</b>	Cytoplasm.

## Images



Western blot - Anti-Caspase-6/CASP-6 antibody [EP1325Y] (ab52951)

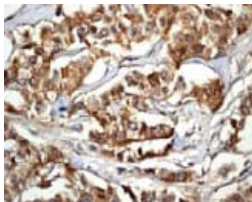
Anti-Caspase-6/CASP-6 antibody [EP1325Y] (ab52951) at 1/20000 dilution + MCF-7 cell lysate at 10 µg

**Secondary**

Goat anti-rabbit HRP conjugated at 1/2000 dilution

**Predicted band size:** 34 kDa

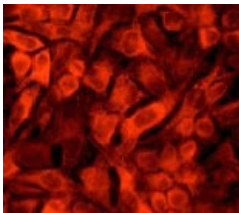
**Observed band size:** 34 kDa



Immunohistochemistry (Formalin/PFA-fixed paraffin-embedded sections) - Anti-Caspase-6/CASP-6 antibody [EP1325Y] (ab52951)

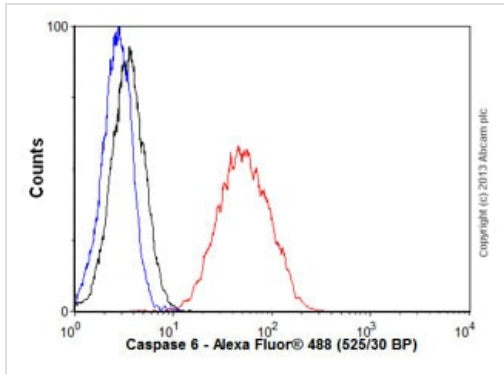
ab52951 at 1:100 dilution staining Caspase-6/CASP-6 in human breast carcinoma by Immunohistochemistry, Paraffin embedded tissue.

Perform heat mediated antigen retrieval with citrate buffer pH 6 before commencing with IHC staining protocol.



Immunocytochemistry/ Immunofluorescence - Anti-Caspase-6/CASP-6 antibody [EP1325Y] (ab52951)





ab52951 at 1:100 dilution staining Caspase-6/CASP-6 in HeLa cells by Immunofluorescence.



Flow Cytometry (Intracellular) - Anti-Caspase-6/CASP-6 antibody [EP1325Y] (ab52951)

Overlay histogram showing HeLa cells stained with ab52951 (red line). The cells were fixed with 80% methanol (5 min) and then permeabilized with 0.1% PBS-Tween for 20 min. The cells were then incubated in 1x PBS / 10% normal goat serum / 0.3M glycine to block non-specific protein-protein interactions followed by the antibody (ab52951, 1/1000 dilution) for 30 min at 22°C. The secondary antibody used was Alexa Fluor<sup>®</sup> 488 goat anti-rabbit IgG (H&L) ([ab150077](#)) at 1/2000 dilution for 30 min at 22°C. Isotype control antibody (black line) was rabbit IgG (monoclonal) (0.1µg/1x10<sup>6</sup> cells) used under the same conditions. Unlabelled sample (blue line) was also used as a control. Acquisition of >5,000 events were collected using a 20mW Argon ion laser (488nm) and 525/30 bandpass filter. This antibody gave a positive signal in HeLa cells fixed with 4% paraformaldehyde (10 min)/permeabilized with 0.1% PBS-Tween for 20 min used under the same conditions.

Why choose a recombinant antibody?

 <p><b>Research with confidence</b> Consistent and reproducible results</p>	 <p><b>Long-term and scalable supply</b> Recombinant technology</p>
 <p><b>Success from the first experiment</b> Confirmed specificity</p>	 <p><b>Ethical standards compliant</b> Animal-free production</p>

Anti-Caspase-6/CASP-6 antibody [EP1325Y] (ab52951)

**Please note:** All products are "FOR RESEARCH USE ONLY. NOT FOR USE IN DIAGNOSTIC PROCEDURES"

**Our Abpromise to you: Quality guaranteed and expert technical support**

- Replacement or refund for products not performing as stated on the datasheet
- Valid for 12 months from date of delivery
- Response to your inquiry within 24 hours
- We provide support in Chinese, English, French, German, Japanese and Spanish
- Extensive multi-media technical resources to help you

- We investigate all quality concerns to ensure our products perform to the highest standards

If the product does not perform as described on this datasheet, we will offer a refund or replacement. For full details of the Abpromise, please visit <https://www.abcam.com/abpromise> or contact our technical team.

### **Terms and conditions**

---

- Guarantee only valid for products bought direct from Abcam or one of our authorized distributors