

### Anti-CAST antibody ab75252

2 Images

#### Overview

<b>Product name</b>	Anti-CAST antibody
<b>Description</b>	Rabbit polyclonal to CAST
<b>Host species</b>	Rabbit
<b>Tested applications</b>	<b>Suitable for:</b> IHC-P, IP
<b>Species reactivity</b>	<b>Reacts with:</b> Human
<b>Immunogen</b>	Synthetic peptide corresponding to Human CAST aa 200-300. NP_036231.1 Database link: <a href="#">O15446-1</a>
<b>Positive control</b>	HeLa whole cell lysate.
<b>General notes</b>	<p>The Life Science industry has been in the grips of a reproducibility crisis for a number of years. Abcam is leading the way in addressing this with our range of recombinant monoclonal antibodies and knockout edited cell lines for gold-standard validation. Please check that this product meets your needs before purchasing.</p> <p>If you have any questions, special requirements or concerns, please send us an inquiry and/or contact our Support team ahead of purchase. Recommended alternatives for this product can be found below, along with publications, customer reviews and Q&amp;As</p>

#### Properties

<b>Form</b>	Liquid
<b>Storage instructions</b>	Shipped at 4°C. Upon delivery aliquot and store at -20°C. Avoid freeze / thaw cycles.
<b>Storage buffer</b>	pH: 7 Preservative: 0.09% Sodium azide Constituents: 1.815% Tris, 1.764% Sodium citrate, 0.021% PBS
<b>Purity</b>	Immunogen affinity purified
<b>Purification notes</b>	ab75252 was affinity purified using an epitope specific to CAST immobilized on solid support.
<b>Clonality</b>	Polyclonal
<b>Isotype</b>	IgG

#### Applications

## The Abpromise guarantee

Our **Abpromise guarantee** covers the use of ab75252 in the following tested applications.

The application notes include recommended starting dilutions; optimal dilutions/concentrations should be determined by the end user.

Application	Abreviews	Notes
IHC-P		1/1000 - 1/5000. Perform heat mediated antigen retrieval with citrate buffer pH 6 before commencing with IHC staining protocol.
IP		Use at 2-5 µg/mg of lysate.

## Target

### Function

DNA-dependent RNA polymerase catalyzes the transcription of DNA into RNA using the four ribonucleoside triphosphates as substrates. Component of RNA polymerase I which synthesizes ribosomal RNA precursors. Isoform 1 is involved in UBTF-activated transcription, presumably at a step following PIC formation.

Isoform 2 has been described as a component of preformed T-cell receptor (TCR) complex.

### Sequence similarities

Belongs to the eukaryotic RPA34 RNA polymerase subunit family.

### Post-translational modifications

Isoform 2 undergoes tyrosine phosphorylation upon T-cell receptor (TCR) stimulation. This phosphorylation has not been confirmed by other group.

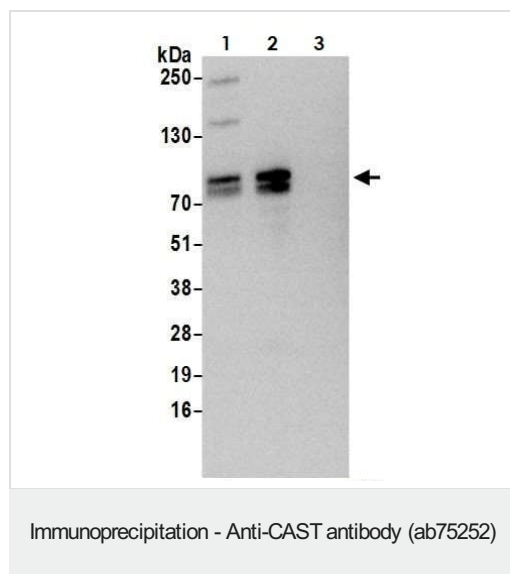
Isoform 1 is phosphorylated on tyrosine residues in initiation-competent Pol I-beta complexes but not in Pol I-alpha complexes.

Phosphorylated upon DNA damage, probably by ATM or ATR.

### Cellular localization

Nucleus > nucleolus. Chromosome. Found at the fibrillar centers of the nucleolus in interphase and during cell division it is localized to the nucleolus organizer regions of the chromosomes.

## Images



CAST was immunoprecipitated from HeLa whole cell lysate (1 mg per IP reaction, 20% loaded) with ab75252 at 3 µg per reaction.

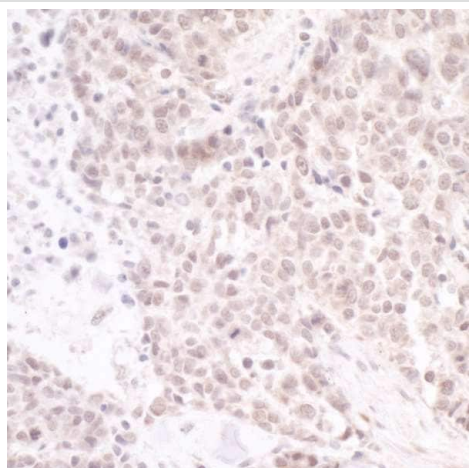
Western blot was performed on the immunoprecipitate using **ab70497** at 1 µg/mL.

Lane 1: rabbit anti-PAF49 antibody IP in HeLa whole cell lysate.

Lane 2: ab75252 IP in HeLa whole cell lysate.

Lane 3: Control IgG in HeLa whole cell lysate.

Detection: Chemiluminescence with an exposure time of 10 seconds



Immunohistochemistry (Formalin/PFA-fixed paraffin-embedded sections) analysis of human lung cancer tissue labelling CAST with ab75252 at 1/5000 dilution.

Immunohistochemistry (Formalin/PFA-fixed paraffin-embedded sections) - Anti-CAST antibody (ab75252)

**Please note:** All products are "FOR RESEARCH USE ONLY. NOT FOR USE IN DIAGNOSTIC PROCEDURES"

#### Our Abpromise to you: Quality guaranteed and expert technical support

---

- Replacement or refund for products not performing as stated on the datasheet
- Valid for 12 months from date of delivery
- Response to your inquiry within 24 hours
- We provide support in Chinese, English, French, German, Japanese and Spanish
- Extensive multi-media technical resources to help you
- We investigate all quality concerns to ensure our products perform to the highest standards

If the product does not perform as described on this datasheet, we will offer a refund or replacement. For full details of the Abpromise, please visit <https://www.abcam.com/abpromise> or contact our technical team.

#### Terms and conditions

---

- Guarantee only valid for products bought direct from Abcam or one of our authorized distributors