

Product datasheet

Anti-Cathepsin B antibody [EPR4323] - BSA and Azide free ab230401

Recombinant RabMAb

[1 References](#) [5 Images](#)

Overview

Product name	Anti-Cathepsin B antibody [EPR4323] - BSA and Azide free
Description	Rabbit monoclonal [EPR4323] to Cathepsin B - BSA and Azide free
Host species	Rabbit
Tested applications	Suitable for: WB, ICC/IF, IHC-P Unsuitable for: Flow Cyt or IP
Species reactivity	Reacts with: Human Does not react with: Mouse, Rat
Immunogen	Synthetic peptide. This information is proprietary to Abcam and/or its suppliers.
Positive control	Human kidney and papillary carcinoma tissues; HeLa cells; HT1080, A375, SW480 and A549 cell line lysates.
General notes	ab230401 is the carrier-free version of ab125067 .

Our **carrier-free** antibodies are typically supplied in a PBS-only formulation, purified and free of BSA, sodium azide and glycerol. The carrier-free buffer and high concentration allow for increased conjugation efficiency.

This conjugation-ready format is designed for use with fluorochromes, metal isotopes, oligonucleotides, and enzymes, which makes them ideal for antibody labelling, functional and cell-based assays, flow-based assays (e.g. mass cytometry) and Multiplex Imaging applications.

Use our [conjugation kits](#) for antibody conjugates that are ready-to-use in as little as 20 minutes with <1 minute hands-on-time and 100% antibody recovery: available for fluorescent dyes, HRP, biotin and gold.

This product is compatible with the Maxpar[®] Antibody Labeling Kit from Fluidigm, without the need for antibody preparation. Maxpar[®] is a trademark of Fluidigm Canada Inc.

Properties

Form	Liquid
Storage instructions	Shipped at 4°C. Store at +4°C. Do Not Freeze.

Storage buffer	pH: 7.20 Constituent: PBS
Carrier free	Yes
Purity	Protein A purified
Clonality	Monoclonal
Clone number	EPR4323
Isotype	IgG

Applications

The Abpromise guarantee Our **Abpromise guarantee** covers the use of ab230401 in the following tested applications. The application notes include recommended starting dilutions; optimal dilutions/concentrations should be determined by the end user.

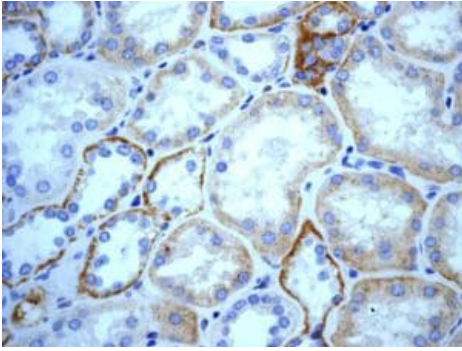
Application	Abreviews	Notes
WB		Use at an assay dependent concentration. Predicted molecular weight: 38 kDa.
ICC/IF		Use at an assay dependent concentration.
IHC-P		Use at an assay dependent concentration. Perform heat mediated antigen retrieval with citrate buffer pH 6 before commencing with IHC staining protocol.

Application notes Is unsuitable for Flow Cyt or IP.

Target

Function	Thiol protease which is believed to participate in intracellular degradation and turnover of proteins. Has also been implicated in tumor invasion and metastasis.
Sequence similarities	Belongs to the peptidase C1 family.
Cellular localization	Lysosome. Melanosome. Identified by mass spectrometry in melanosome fractions from stage I to stage IV.

Images

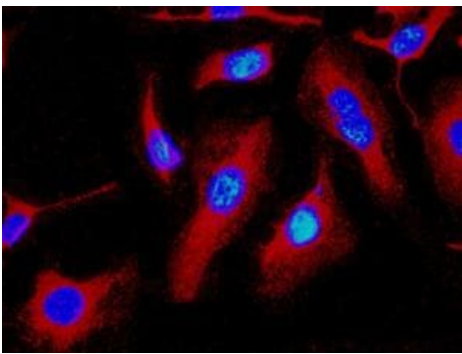


Immunohistochemistry (Formalin/PFA-fixed paraffin-embedded sections) - Anti-Cathepsin B antibody [EPR4323] - BSA and Azide free (ab230401)

ab125067, at a 1/50 dilution, staining Cathepsin B in paraffin-embedded Human kidney tissue by immunohistochemistry.

This data was developed using the same antibody clone in a different buffer formulation containing PBS, BSA, glycerol, and sodium azide (**ab125067**).

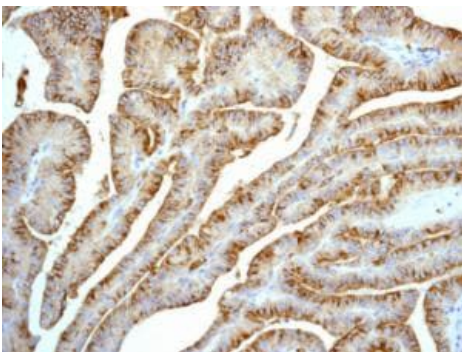
Heat mediated antigen retrieval was performed with citrate buffer pH 6 before commencing with IHC staining protocol.



Immunocytochemistry/ Immunofluorescence - Anti-Cathepsin B antibody [EPR4323] - BSA and Azide free (ab230401)

ab125067, at a 1/50 dilution, staining Cathepsin B (red) in HeLa cells by immunofluorescence. DNA is marked in blue.

This data was developed using the same antibody clone in a different buffer formulation containing PBS, BSA, glycerol, and sodium azide (**ab125067**).

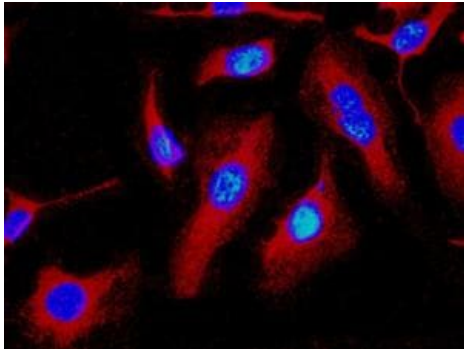


Immunohistochemistry (Formalin/PFA-fixed paraffin-embedded sections) - Anti-Cathepsin B antibody [EPR4323] - BSA and Azide free (ab230401)

This IHC data was generated using the same anti-Cathepsin B antibody clone, EPR4323, in a different buffer formulation (cat# **ab125067**).

ab125067, at a 1/50 dilution, staining Cathepsin B in paraffin-embedded Human papillary carcinoma tissue by immunohistochemistry.

Heat mediated antigen retrieval was performed with citrate buffer pH 6 before commencing with IHC staining protocol.



Immunocytochemistry/ Immunofluorescence - Anti-Cathepsin B antibody [EPR4323] - BSA and Azide free (ab230401)

This ICC data was generated using the same anti-Cathepsin B antibody clone, EPR4323, in a different buffer formulation (cat# **ab125067**).

ab125067, at a 1/50 dilution, staining Cathepsin B (red) in HeLa cells by immunofluorescence. DNA is marked in blue.

Why choose a recombinant antibody?



Research with confidence
Consistent and reproducible results



Long-term and scalable supply
Recombinant technology



Success from the first experiment
Confirmed specificity



Ethical standards compliant
Animal-free production

Anti-Cathepsin B antibody [EPR4323] - BSA and Azide free (ab230401)

Please note: All products are "FOR RESEARCH USE ONLY. NOT FOR USE IN DIAGNOSTIC PROCEDURES"

Our Abpromise to you: Quality guaranteed and expert technical support

- Replacement or refund for products not performing as stated on the datasheet
- Valid for 12 months from date of delivery
- Response to your inquiry within 24 hours
- We provide support in Chinese, English, French, German, Japanese and Spanish
- Extensive multi-media technical resources to help you
- We investigate all quality concerns to ensure our products perform to the highest standards

If the product does not perform as described on this datasheet, we will offer a refund or replacement. For full details of the Abpromise, please visit <https://www.abcam.com/abpromise> or contact our technical team.

Terms and conditions

- Guarantee only valid for products bought direct from Abcam or one of our authorized distributors