

Product datasheet

Anti-Cathepsin D antibody ab826

★★★★★ [2 Abreviews](#) [5 References](#) [1 Image](#)

Overview

Product name	Anti-Cathepsin D antibody
Description	Rabbit polyclonal to Cathepsin D
Host species	Rabbit
Specificity	This antibody reacts with the zymogen as well as the activated form of cathepsin D. It stains fibroblasts and macrophages strongly but stains weakly with the myoepithelial cells of breast. It also stains sweat ducts and glands in the skin, islets cells and granules of pancreatic acini.
Tested applications	Suitable for: IHC-P
Species reactivity	Reacts with: Human
Immunogen	Full length protein corresponding to Human Cathepsin D. Cathepsin D isolated from human liver
General notes	<p>The Life Science industry has been in the grips of a reproducibility crisis for a number of years. Abcam is leading the way in addressing this with our range of recombinant monoclonal antibodies and knockout edited cell lines for gold-standard validation. Please check that this product meets your needs before purchasing.</p> <p>If you have any questions, special requirements or concerns, please send us an inquiry and/or contact our Support team ahead of purchase. Recommended alternatives for this product can be found below, along with publications, customer reviews and Q&As</p>

Properties

Form	Liquid
Storage instructions	Shipped at 4°C. Store at +4°C short term (1-2 weeks). Store at -20°C or -80°C. Avoid freeze / thaw cycle.
Storage buffer	pH: 7.3 Preservative: 0.05% Sodium azide Constituent: 1% BSA
Purity	Protein A purified
Clonality	Polyclonal
Isotype	IgG

Applications

The Abpromise guarantee

Our **Abpromise guarantee** covers the use of ab826 in the following tested applications.

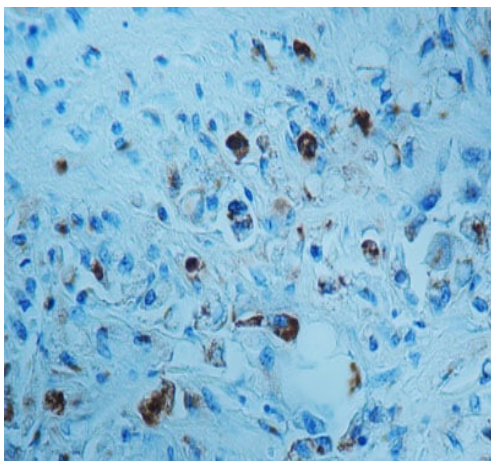
The application notes include recommended starting dilutions; optimal dilutions/concentrations should be determined by the end user.

Application	Abreviews	Notes
IHC-P	★★★★★ (1)	1/75 - 1/100. ABC method.

Target

Function	Acid protease active in intracellular protein breakdown. Involved in the pathogenesis of several diseases such as breast cancer and possibly Alzheimer disease.
Tissue specificity	Expressed in the aorta extracellular space (at protein level).
Involvement in disease	Ceroid lipofuscinosis, neuronal, 10
Sequence similarities	Belongs to the peptidase A1 family. Contains 1 peptidase A1 domain.
Post-translational modifications	N- and O-glycosylated.
Cellular localization	Lysosome. Melanosome. Secreted, extracellular space. Identified by mass spectrometry in melanosome fractions from stage I to stage IV. In aortic samples, detected as an extracellular protein loosely bound to the matrix (PubMed:20551380).

Images



ab826 staining Cathepsin D in formalin-fixed, paraffin-embedded Human prostate tissue by Immunohistochemistry.

Immunohistochemistry (Formalin/PFA-fixed paraffin-embedded sections) - Anti-Cathepsin D antibody (ab826)

Please note: All products are "FOR RESEARCH USE ONLY. NOT FOR USE IN DIAGNOSTIC PROCEDURES"

Our Abpromise to you: Quality guaranteed and expert technical support

- Replacement or refund for products not performing as stated on the datasheet
- Valid for 12 months from date of delivery
- Response to your inquiry within 24 hours
- We provide support in Chinese, English, French, German, Japanese and Spanish
- Extensive multi-media technical resources to help you
- We investigate all quality concerns to ensure our products perform to the highest standards

If the product does not perform as described on this datasheet, we will offer a refund or replacement. For full details of the Abpromise, please visit <https://www.abcam.com/abpromise> or contact our technical team.

Terms and conditions

- Guarantee only valid for products bought direct from Abcam or one of our authorized distributors