




Product datasheet

Anti-Cathepsin K antibody ab231590

6 Images

Overview

Product name	Anti-Cathepsin K antibody
Description	Rabbit polyclonal to Cathepsin K
Host species	Rabbit
Tested applications	Suitable for: IHC-P, WB
Species reactivity	Reacts with: Human, Pig Predicted to work with: Cynomolgus monkey, Rhesus monkey 
Immunogen	Recombinant fragment (His-T7-tag) corresponding to Human Cathepsin K aa 50 to the C-terminus. Expressed in E.coli. Database link: P43235  Run BLAST with  Run BLAST with
Positive control	WB: Recombinant human CTSK protein; pig heart tissue. IHC-P: Human breast cancer, prostate cancer, liver and lung cancer tissue.
General notes	<p>The Life Science industry has been in the grips of a reproducibility crisis for a number of years. Abcam is leading the way in addressing this with our range of recombinant monoclonal antibodies and knockout edited cell lines for gold-standard validation. Please check that this product meets your needs before purchasing.</p> <p>If you have any questions, special requirements or concerns, please send us an inquiry and/or contact our Support team ahead of purchase. Recommended alternatives for this product can be found below, along with publications, customer reviews and Q&As</p>

Properties

Form	Liquid
Storage instructions	Shipped at 4°C. Store at +4°C short term (1-2 weeks). Upon delivery aliquot. Store at -20°C long term. Avoid freeze / thaw cycle.
Storage buffer	pH: 7.40 Preservative: 0.011% Proclin 300 Constituents: 55.77% Glycerol (glycerin, glycerine), 44.219% PBS
Purity	Immunogen affinity purified
Purification notes	Followed by Protein A affinity chromatography.
Clonality	Polyclonal

Isotype

IgG

Applications

The Abpromise guarantee

Our **Abpromise guarantee** covers the use of ab231590 in the following tested applications.

The application notes include recommended starting dilutions; optimal dilutions/concentrations should be determined by the end user.

Application	Abreviews	Notes
IHC-P		Use a concentration of 5 - 20 µg/ml.
WB		Use a concentration of 1 - 5 µg/ml. Predicted molecular weight: 37 kDa.

Target

Function

Closely involved in osteoclastic bone resorption and may participate partially in the disorder of bone remodeling. Displays potent endoprotease activity against fibrinogen at acid pH. May play an important role in extracellular matrix degradation.

Tissue specificity

Predominantly expressed in osteoclasts (bones).

Involvement in disease

Defects in CTSK are the cause of pycnodysostosis (PKND) [MIM:265800]. PKND is an autosomal recessive osteochondrodysplasia characterized by osteosclerosis and short stature.

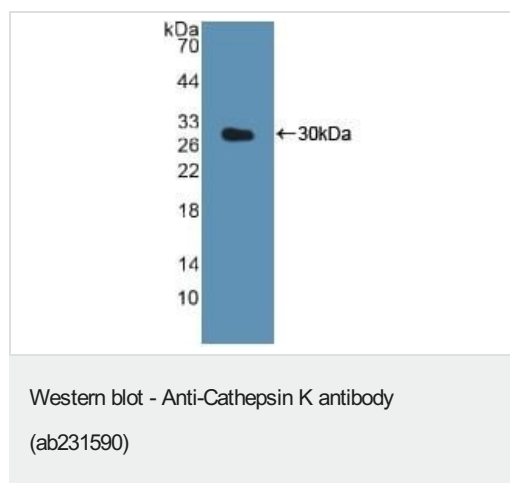
Sequence similarities

Belongs to the peptidase C1 family.

Cellular localization

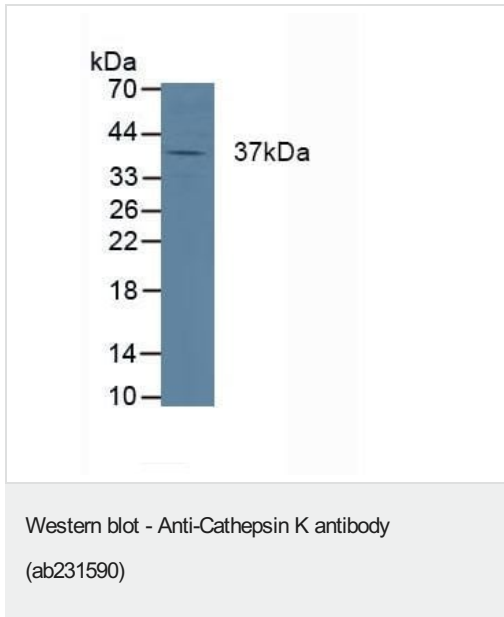
Lysosome.

Images



Anti-Cathepsin K antibody (ab231590) at 3 µg/ml + Recombinant human Cathepsin K protein

Predicted band size: 37 kDa

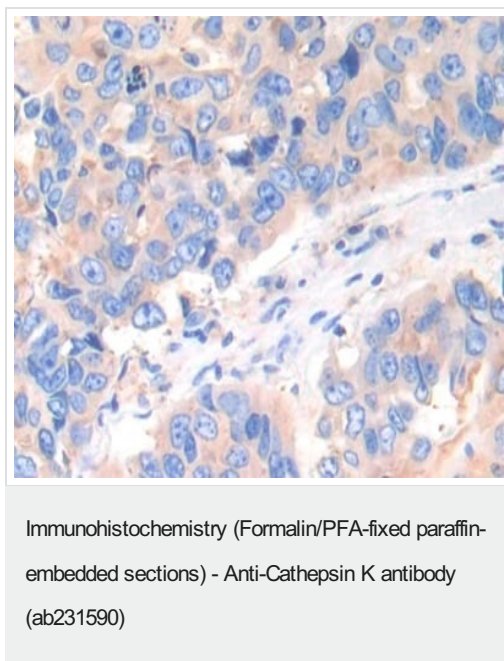


Anti-Cathepsin K antibody (ab231590) at 3 µg/ml + Pig heart tissue

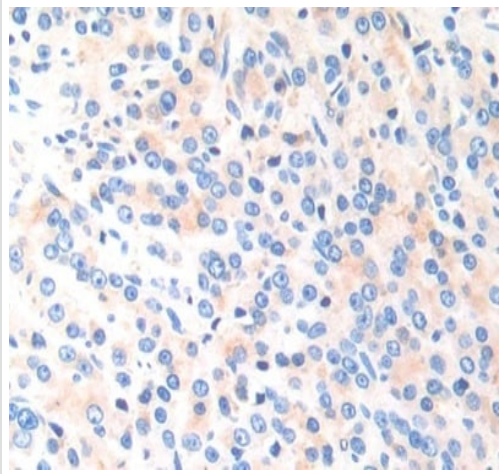
Secondary

HRP-linked guinea pig anti-rabbit at 1/2000 dilution

Predicted band size: 37 kDa

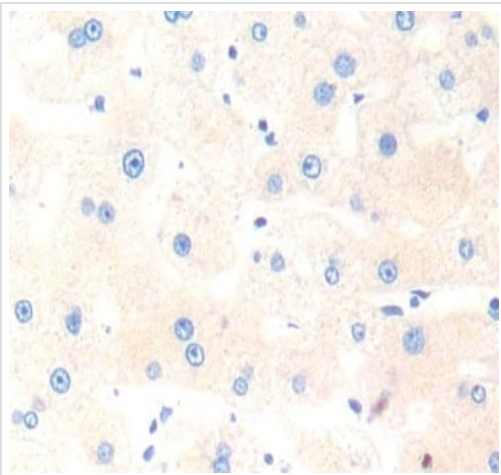


Formalin-fixed, paraffin-embedded human breast cancer tissue stained for Cathepsin K using ab231590 at 20 µg/mL in immunohistochemical analysis. DAB staining.



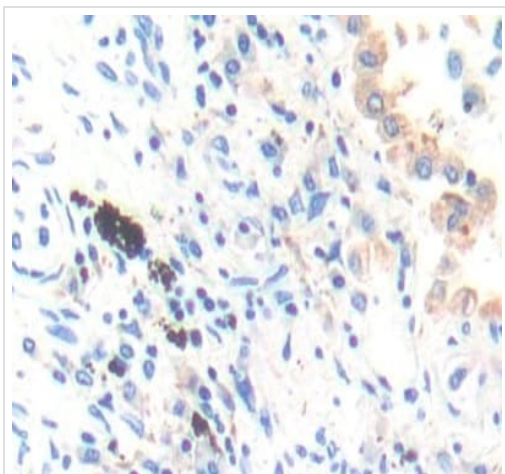
Formalin-fixed, paraffin-embedded human prostate cancer tissue stained for Cathepsin K using ab231590 at 20 µg/mL in immunohistochemical analysis. DAB staining.

Immunohistochemistry (Formalin/PFA-fixed paraffin-embedded sections) - Anti-Cathepsin K antibody (ab231590)



Formalin-fixed, paraffin-embedded human liver tissue stained for Cathepsin K using ab231590 at 20 µg/mL in immunohistochemical analysis. DAB staining.

Immunohistochemistry (Formalin/PFA-fixed paraffin-embedded sections) - Anti-Cathepsin K antibody (ab231590)



Formalin-fixed, paraffin-embedded human lung cancer tissue stained for Cathepsin K using ab231590 at 20 µg/mL in immunohistochemical analysis. DAB staining.

Immunohistochemistry (Formalin/PFA-fixed paraffin-embedded sections) - Anti-Cathepsin K antibody (ab231590)

Please note: All products are "FOR RESEARCH USE ONLY. NOT FOR USE IN DIAGNOSTIC PROCEDURES"

Our Abpromise to you: Quality guaranteed and expert technical support

- Replacement or refund for products not performing as stated on the datasheet
- Valid for 12 months from date of delivery
- Response to your inquiry within 24 hours
- We provide support in Chinese, English, French, German, Japanese and Spanish
- Extensive multi-media technical resources to help you
- We investigate all quality concerns to ensure our products perform to the highest standards

If the product does not perform as described on this datasheet, we will offer a refund or replacement. For full details of the Abpromise, please visit <https://www.abcam.com/abpromise> or contact our technical team.

Terms and conditions

- Guarantee only valid for products bought direct from Abcam or one of our authorized distributors