


Anti-Cathepsin K antibody ab85716

[1 References](#) [1 Image](#)

Overview

Product name	Anti-Cathepsin K antibody
Description	Rabbit polyclonal to Cathepsin K
Host species	Rabbit
Tested applications	Suitable for: WB
Species reactivity	Reacts with: Human Predicted to work with: Mouse, Rat, Chicken, Cow, Dog, Pig, Non human primates 
Immunogen	Synthetic peptide corresponding to Human Cathepsin K aa 250 to the C-terminus conjugated to keyhole limpet haemocyanin. (Peptide available as ab97980)
Positive control	This antibody gave a positive signal in the following lysates: Human Bone Marrow Tissue; Human Lung Tissue; U2OS Whole Cell; MCF7 Whole Cell; MDA-MB-231 Whole Cell; MDA-MB-361 Whole Cell; Saos 2 Whole Cell.
General notes	<p>The Life Science industry has been in the grips of a reproducibility crisis for a number of years. Abcam is leading the way in addressing this with our range of recombinant monoclonal antibodies and knockout edited cell lines for gold-standard validation. Please check that this product meets your needs before purchasing.</p> <p>If you have any questions, special requirements or concerns, please send us an inquiry and/or contact our Support team ahead of purchase. Recommended alternatives for this product can be found below, along with publications, customer reviews and Q&As</p>

Properties

Form	Liquid
Storage instructions	Shipped at 4°C. Store at +4°C short term (1-2 weeks). Upon delivery aliquot. Store at -20°C or -80°C. Avoid freeze / thaw cycle.
Storage buffer	pH: 7.40 Preservative: 0.02% Sodium azide Constituent: PBS Batches of this product that have a concentration < 1mg/ml may have BSA added as a stabilising agent. If you would like information about the formulation of a specific lot, please contact our scientific support team who will be happy to help.

Purity	Immunogen affinity purified
Clonality	Polyclonal
Isotype	IgG

Applications

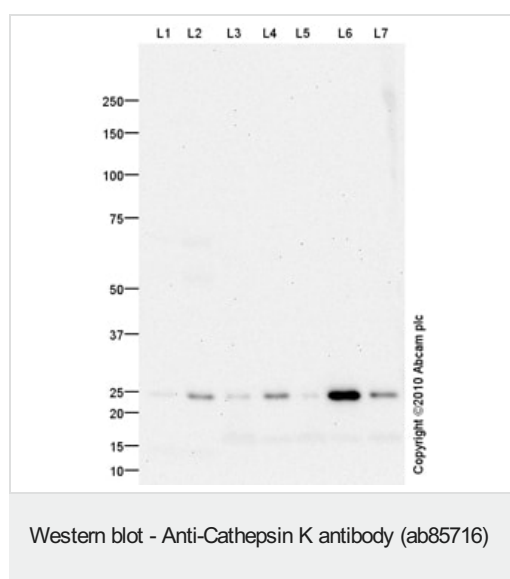
The Abpromise guarantee Our **Abpromise guarantee** covers the use of ab85716 in the following tested applications. The application notes include recommended starting dilutions; optimal dilutions/concentrations should be determined by the end user.

Application	Abreviews	Notes
WB		Use a concentration of 1 µg/ml. Detects a band of approximately 24 kDa (predicted molecular weight: 37 kDa).

Target

Function	Closely involved in osteoclastic bone resorption and may participate partially in the disorder of bone remodeling. Displays potent endoprotease activity against fibrinogen at acid pH. May play an important role in extracellular matrix degradation.
Tissue specificity	Predominantly expressed in osteoclasts (bones).
Involvement in disease	Defects in CTSK are the cause of pycnodysostosis (PKND) [MIM:265800]. PKND is an autosomal recessive osteochondrodysplasia characterized by osteosclerosis and short stature.
Sequence similarities	Belongs to the peptidase C1 family.
Cellular localization	Lysosome.

Images



All lanes : Anti-Cathepsin K antibody (ab85716) at 1 µg/ml

Lane 1 : Bone marrow (Human) Tissue Lysate

Lane 2 : Lung (Human) Tissue Lysate

Lane 3 : U2OS (Human osteosarcoma cell line) Whole Cell Lysate

Lane 4 : MCF7 (Human breast adenocarcinoma cell line) Whole Cell Lysate

Lane 5 : MDA-MB-231 (Human breast adenocarcinoma cell line) Whole Cell Lysate

Lane 6 : MDA-MB-361 (Human breast adenocarcinoma cell line) Whole Cell Lysate

Lane 7 : Saos 2 (Human epithelial-like osteosarcoma cell line) Whole Cell Lysate

Lysates/proteins at 10 µg per lane.

Secondary

All lanes : Goat polyclonal to Rabbit IgG - H&L - Pre-Adsorbed (HRP) at 1/3000 dilution

Developed using the ECL technique.

Performed under reducing conditions.

Predicted band size: 37 kDa

Observed band size: 24 kDa

Exposure time: 20 minutes

We hypothesize that the 24 kDa band represents the mature form of Cathepsin K.

Please note: All products are "FOR RESEARCH USE ONLY. NOT FOR USE IN DIAGNOSTIC PROCEDURES"

Our Abpromise to you: Quality guaranteed and expert technical support

- Replacement or refund for products not performing as stated on the datasheet
- Valid for 12 months from date of delivery
- Response to your inquiry within 24 hours
- We provide support in Chinese, English, French, German, Japanese and Spanish
- Extensive multi-media technical resources to help you
- We investigate all quality concerns to ensure our products perform to the highest standards

If the product does not perform as described on this datasheet, we will offer a refund or replacement. For full details of the Abpromise, please visit <https://www.abcam.com/abpromise> or contact our technical team.

Terms and conditions

- Guarantee only valid for products bought direct from Abcam or one of our authorized distributors