

Product datasheet

Anti-Cathepsin L/MEP antibody ab203028

★☆☆☆☆ [1 Abreviews](#) [6 References](#) [2 Images](#)

Overview

Product name	Anti-Cathepsin L/MEP antibody
Description	Rabbit polyclonal to Cathepsin L/MEP
Host species	Rabbit
Tested applications	Suitable for: WB, IHC-P
Species reactivity	Reacts with: Rat
Immunogen	Synthetic peptide within Mouse Cathepsin L/MEP aa 50-150 conjugated to keyhole limpet haemocyanin. The exact immunogen sequence used to generate this antibody is proprietary information. If additional detail on the immunogen is needed to determine the suitability of the antibody for your needs, please contact our Scientific Support team to discuss your requirements. Database link: P06797
	Run BLAST with Run BLAST with
Positive control	Rat skin tissue; Rat liver lysate.
General notes	<p>The Life Science industry has been in the grips of a reproducibility crisis for a number of years. Abcam is leading the way in addressing this with our range of recombinant monoclonal antibodies and knockout edited cell lines for gold-standard validation. Please check that this product meets your needs before purchasing.</p> <p>If you have any questions, special requirements or concerns, please send us an inquiry and/or contact our Support team ahead of purchase. Recommended alternatives for this product can be found below, along with publications, customer reviews and Q&As</p>

Properties

Form	Liquid
Storage instructions	Shipped at 4°C. Store at +4°C short term (1-2 weeks). Upon delivery aliquot. Store at -20°C long term. Avoid freeze / thaw cycle.
Storage buffer	pH: 7.40 Preservative: 0.02% Proclin 300 Constituents: 50% Glycerol (glycerin, glycerine), 1% BSA, 48.98% TBS, 1X
	Aqueous buffered solution
Purity	Protein A purified

Clonality Polyclonal

Isotype IgG

Applications

The Abpromise guarantee Our **Abpromise guarantee** covers the use of ab203028 in the following tested applications. The application notes include recommended starting dilutions; optimal dilutions/concentrations should be determined by the end user.

Application	Abreviews	Notes
WB	★☆☆☆☆ (1)	1/100 - 1/1000. Predicted molecular weight: 37 kDa.
IHC-P		1/100 - 1/500. When using a fluorescent probe the recommended dilution is 1/50 – 1/200

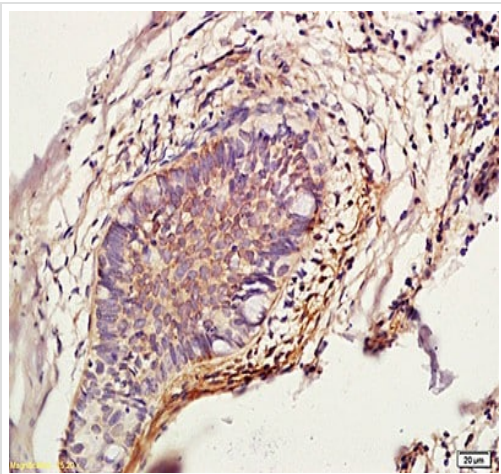
Target

Function Important for the overall degradation of proteins in lysosomes.

Sequence similarities Belongs to the peptidase C1 family.

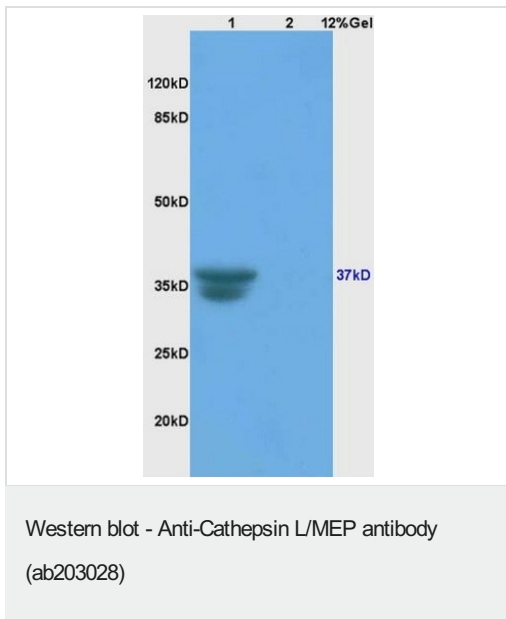
Cellular localization Lysosome.

Images



Immunohistochemical analysis of Formalin-fixed, paraffin-embedded rat skin tissue labeling Cathepsin L/MEP with ab203028 at 1/200 dilution with DAB staining.

Immunohistochemistry (Formalin/PFA-fixed paraffin-embedded sections) - Anti-Cathepsin L/MEP antibody (ab203028)



All lanes : Anti-Cathepsin L/MEP antibody (ab203028) at 1/200 dilution

Lane 1 : Rat liver lysate

Lane 2 : Rat brain lysate

Secondary

All lanes : Goat Anti-Rabbit IgG Antibody (H+L), HRP at 1/3000 dilution

Predicted band size: 37 kDa

Please note: All products are "FOR RESEARCH USE ONLY. NOT FOR USE IN DIAGNOSTIC PROCEDURES"

Our Abpromise to you: Quality guaranteed and expert technical support

- Replacement or refund for products not performing as stated on the datasheet
- Valid for 12 months from date of delivery
- Response to your inquiry within 24 hours
- We provide support in Chinese, English, French, German, Japanese and Spanish
- Extensive multi-media technical resources to help you
- We investigate all quality concerns to ensure our products perform to the highest standards

If the product does not perform as described on this datasheet, we will offer a refund or replacement. For full details of the Abpromise, please visit <https://www.abcam.com/abpromise> or contact our technical team.

Terms and conditions

- Guarantee only valid for products bought direct from Abcam or one of our authorized distributors