

Product datasheet

Anti-Cathepsin L/V/K/H antibody [EPR8011] - BSA and Azide free ab248589

Recombinant RabMAb

[15 Images](#)

Overview

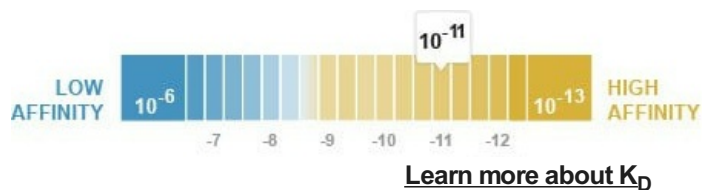
Product name	Anti-Cathepsin L/V/K/H antibody [EPR8011] - BSA and Azide free
Description	Rabbit monoclonal [EPR8011] to Cathepsin L/V/K/H - BSA and Azide free
Host species	Rabbit
Tested applications	Suitable for: ICC/IF, ELISA, IHC-P, Flow Cyt (Intra), WB
Species reactivity	Reacts with: Mouse, Rat, Human
Immunogen	Synthetic peptide. This information is proprietary to Abcam and/or its suppliers.
General notes	<p>ab248589 is the carrier-free version of ab133641.</p> <p>Our carrier-free antibodies are typically supplied in a PBS-only formulation, purified and free of BSA, sodium azide and glycerol. The carrier-free buffer and high concentration allow for increased conjugation efficiency.</p> <p>This conjugation-ready format is designed for use with fluorochromes, metal isotopes, oligonucleotides, and enzymes, which makes them ideal for antibody labelling, functional and cell-based assays, flow-based assays (e.g. mass cytometry) and Multiplex Imaging applications.</p> <p>Use our conjugation kits for antibody conjugates that are ready-to-use in as little as 20 minutes with <1 minute hands-on-time and 100% antibody recovery: available for fluorescent dyes, HRP, biotin and gold.</p> <p>This product is compatible with the Maxpar[®] Antibody Labeling Kit from Fluidigm, without the need for antibody preparation. Maxpar[®] is a trademark of Fluidigm Canada Inc.</p> <p>This product is a recombinant monoclonal antibody, which offers several advantages including:</p> <ul style="list-style-type: none">- High batch-to-batch consistency and reproducibility- Improved sensitivity and specificity- Long-term security of supply- Animal-free production <p>For more information see here.</p> <p>Our RabMAb[®] technology is a patented hybridoma-based technology for making rabbit monoclonal antibodies. For details on our patents, please refer to RabMAb[®] patents.</p>

Properties

Form Liquid

Storage instructions Shipped at 4°C. Store at +4°C. Do Not Freeze.

Dissociation constant (K_D) K_D = 4.40 x 10⁻¹¹ M



Storage buffer pH: 7.2
Constituent: PBS

Carrier free Yes

Purity Protein A purified

Clonality Monoclonal

Clone number EPR8011

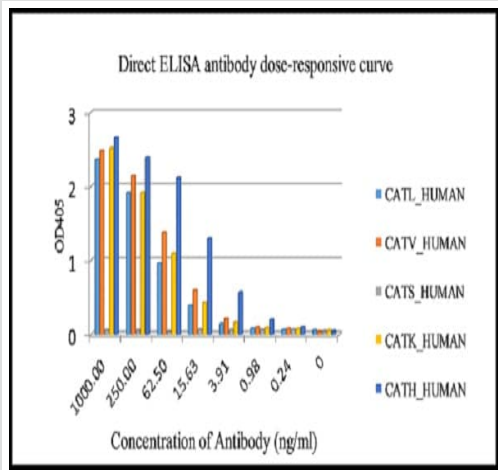
Isotype IgG

Applications

The Abpromise guarantee Our **Abpromise guarantee** covers the use of ab248589 in the following tested applications. The application notes include recommended starting dilutions; optimal dilutions/concentrations should be determined by the end user.

Application	Abreviews	Notes
ICC/IF		Use at an assay dependent concentration.
ELISA		Use at an assay dependent concentration.
IHC-P		Use at an assay dependent concentration. Perform heat mediated antigen retrieval with citrate buffer pH 6 before commencing with IHC staining protocol.
Flow Cyt (Intra)		Use at an assay dependent concentration.
WB		Use at an assay dependent concentration. Predicted molecular weight: 38 kDa.

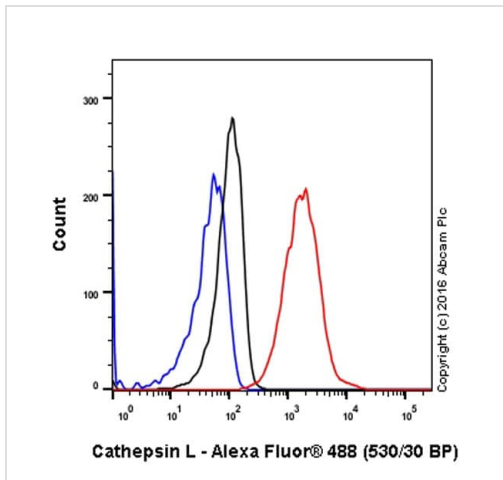
Images



ELISA - Anti-Cathepsin L/V/K/H antibody [EPR8011]
- BSA and Azide free (ab248589)

This data was developed using **ab133641**, the same antibody clone in a different buffer formulation.

Antigen: CATL_HUMAN, CATV_HUMAN, CATS_HUMAN, CATK_HUMAN, CATH_HUMAN Antigen concentration: 1000ng/ml
Primary antibody concentration range: 0~1000ng/ml Secondary antibody: Alkaline Phosphatase-conjugated AffiniPure Goat Anti-Rabbit IgG(H+L) Secondary antibody concentration: 1/2500



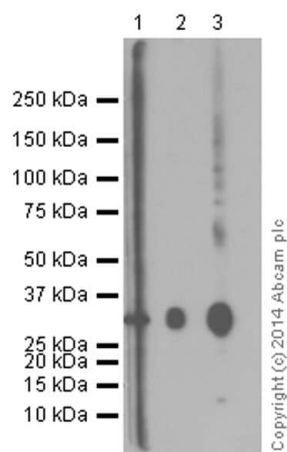
Flow Cytometry (Intracellular) - Anti-Cathepsin L/V/K/H antibody [EPR8011] - BSA and Azide free (ab248589)

This data was developed using **ab133641**, the same antibody clone in a different buffer formulation.

ab133641 staining Cathepsin L in the human cell line HepG2 (human hepatocellular carcinoma) by intracellular flow cytometry. Cells were fixed with 4% paraformaldehyde and the sample was incubated with the primary antibody at a dilution of 1/20. A goat anti rabbit IgG (Alexa Fluor® 488) at a dilution of 1/2000 was used as the secondary antibody.

Isootype control: Rabbit monoclonal IgG (Black)

Unlabelled control: Cell without incubation with primary antibody and secondary antibody (Blue)



Western blot - Anti-Cathepsin L/V/K/H antibody
[EPR8011] - BSA and Azide free (ab248589)

Lane 1 : Anti-Cathepsin L/V/K/H antibody [EPR8011] (**ab133641**)
at 1/20 dilution

Lane 2 : Anti-Cathepsin L + V antibody [33/2] (**ab6314**) at 1/100
dilution

All lanes : Human Cathepsin L recombinant protein fraction

Secondary

Lanes 1 & 3 : Peroxidase conjugated Goat Anti-Rabbit IgG, (H+L)
at 1/1000 dilution

Lane 2 : Rabbit anti-Mouse IgG at 1/2000 dilution

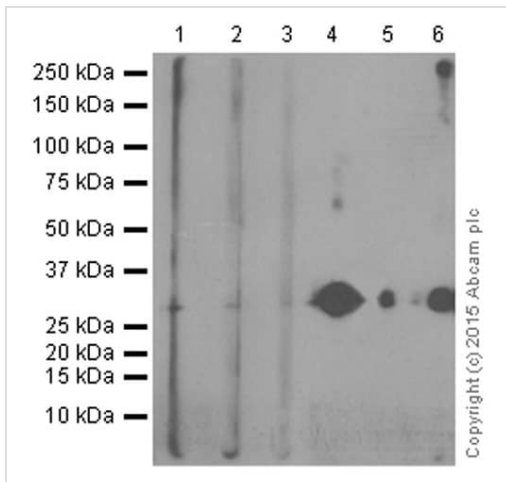
Predicted band size: 38 kDa

This data was developed using **ab133641**, the same antibody
clone in a different buffer formulation.

Blocking and dilution buffer: 5% NFD/MTBST.

Observed MW: 30.

Exposure time: 3 minutes.



Western blot - Anti-Cathepsin L/V/K/H antibody [EPR8011] - BSA and Azide free (ab248589)

Lane 1 : Anti-Cathepsin L/V/K/H antibody [EPR8011] ([ab133641](#)) at 1/20 dilution

Lane 2 : Anti-Cathepsin L/V/K/H antibody [EPR8011] ([ab133641](#)) at 1/100 dilution

Lane 3 : Anti-Cathepsin L/V/K/H antibody [EPR8011] ([ab133641](#)) at 1/500 dilution

Lane 4 : Anti-Cathepsin L + V antibody [33/2] ([ab6314](#)) at 1/100 dilution

Lane 5 : Anti-Cathepsin L + V antibody [33/2] ([ab6314](#)) at 1/1000 dilution

All lanes : Human Cathepsin V recombinant protein fraction

Secondary

Lanes 1-3 : Peroxidase conjugated Goat Anti-Rabbit IgG, (H+L) at 1/1000 dilution

Lanes 4-5 : Rabbit Anti-Mouse secondary ab at 1/2000 dilution

Lane 6 : Goat Anti-Rabbit IgG, (H+L), Peroxidase conjugated at 1/1000 dilution

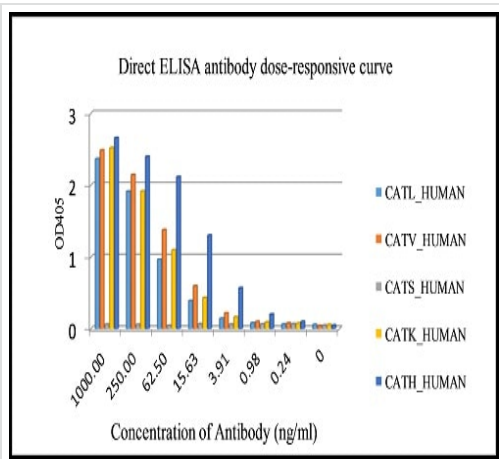
Predicted band size: 38 kDa

This data was developed using [ab133641](#), the same antibody clone in a different buffer formulation.

Blocking and dilution buffer: 5% NFDm/TBST.

Observed MW: 30.

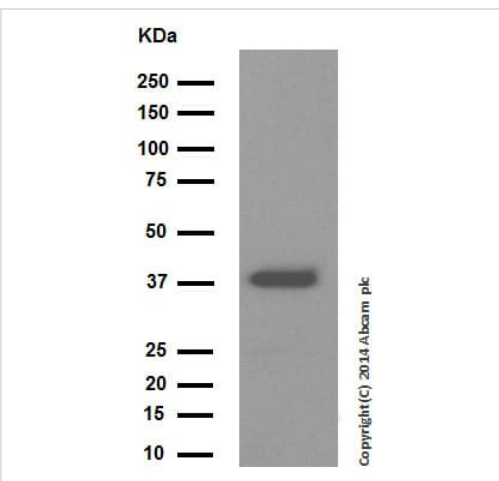
Exposure time: 3 minutes.



ELISA - Anti-Cathepsin L/V/K/H antibody [EPR8011]
- BSA and Azide free (ab248589)

This data was developed using [ab133641](#), the same antibody clone in a different buffer formulation.

Direct ELISA antigen dose-response curve using purified [ab133641](#). Antigen concentration of 1000ng/mL. Alkaline Phosphatase conjugated AffiniPure goat anti-rabbit IgG(H+L) (1/2500) was used as the secondary antibody.



Western blot - Anti-Cathepsin L/V/K/H antibody [EPR8011] - BSA and Azide free (ab248589)

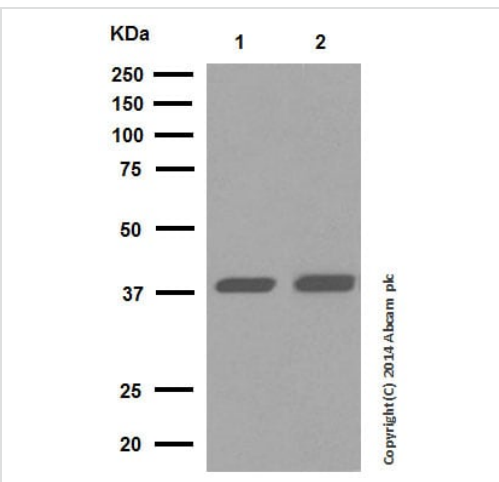
Anti-Cathepsin L/V/K/H antibody [EPR8011] ([ab133641](#)) at 1/20000 dilution (purified) + HepG2 cell lysate at 20 µg

Secondary

Peroxidase conjugated goat anti-rabbit IgG (H+L) at 1/1000 dilution

Predicted band size: 38 kDa

Observed band size: 38 kDa



Western blot - Anti-Cathepsin L/V/K/H antibody [EPR8011] - BSA and Azide free (ab248589)

This data was developed using [ab133641](#), the same antibody clone in a different buffer formulation.

Blocking and dilution buffer: 5% NFDM/TBST.

All lanes : Anti-Cathepsin L/V/K/H antibody [EPR8011] ([ab133641](#)) at 1/10000 dilution (purified)

Lane 1 : HCT-116 cell lysate

Lane 2 : A549 cell lysate

Lysates/proteins at 10 µg per lane.

Secondary

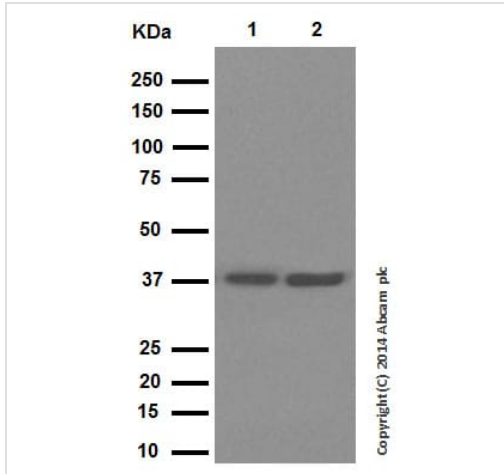
All lanes : Peroxidase conjugated goat anti-rabbit IgG (H+L) at 1/1000 dilution

Predicted band size: 38 kDa

Observed band size: 38 kDa

This data was developed using **ab133641**, the same antibody clone in a different buffer formulation.

Blocking and dilution buffer: 5% NFDm/TBST.



Western blot - Anti-Cathepsin L/V/K/H antibody [EPR8011] - BSA and Azide free (ab248589)

All lanes : Anti-Cathepsin L/V/K/H antibody [EPR8011] (**ab133641**) at 1/20000 dilution (purified)

Lane 1 : NIH/3T3 cell lysate

Lane 2 : PC-12 cell lysate

Lysates/proteins at 20 µg per lane.

Secondary

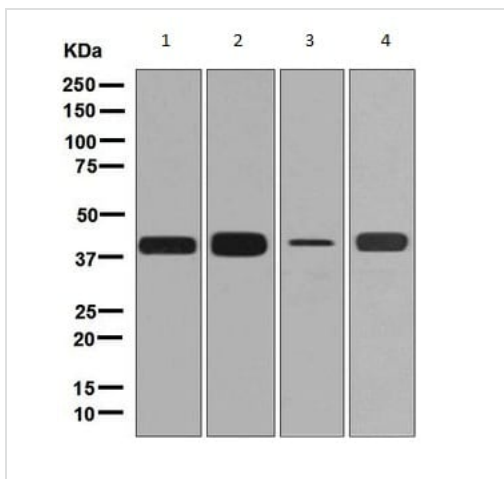
All lanes : Peroxidase conjugated goat anti-rabbit IgG (H+L) at 1/1000 dilution

Predicted band size: 38 kDa

Observed band size: 38 kDa

This data was developed using **ab133641**, the same antibody clone in a different buffer formulation.

Blocking and dilution buffer: 5% NFDm/TBST.



Western blot - Anti-Cathepsin L/V/K/H antibody [EPR8011] - BSA and Azide free (ab248589)

All lanes : Anti-Cathepsin L/V/K/H antibody [EPR8011] (**ab133641**) at 1/1000 dilution (unpurified)

Lane 1 : A549 cell lysate

Lane 2 : HCT-116 cell lysate

Lane 3 : NIH/3T3 cell lysate

Lane 4 : PC-12 cell lysate

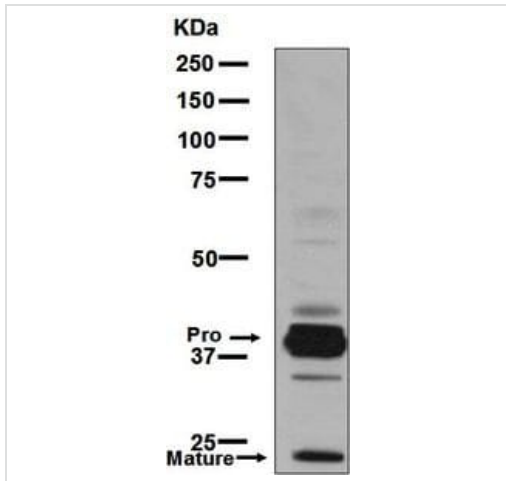
Lysates/proteins at 10 µg per lane.

Secondary

All lanes : HRP-conjugated goat anti-rabbit IgG at 1/2000 dilution

Predicted band size: 38 kDa

This data was developed using [ab133641](#), the same antibody clone in a different buffer formulation.



Western blot - Anti-Cathepsin L/V/K/H antibody [EPR8011] - BSA and Azide free (ab248589)

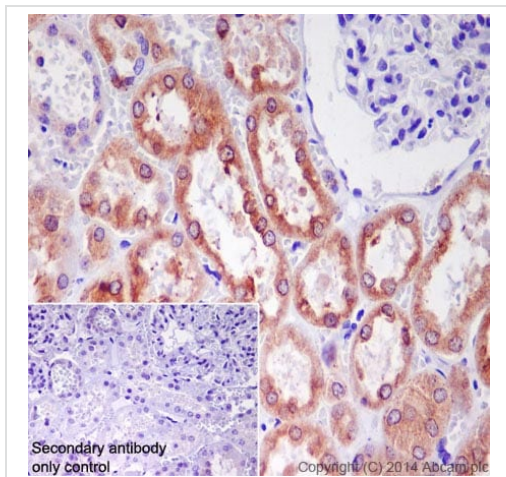
Anti-Cathepsin L/V/K/H antibody [EPR8011] ([ab133641](#)) at 1/1000 dilution (unpurified) + HepG2 cell lysate at 10 µg

Secondary

HRP-conjugated goat anti-rabbit IgG at 1/2000 dilution

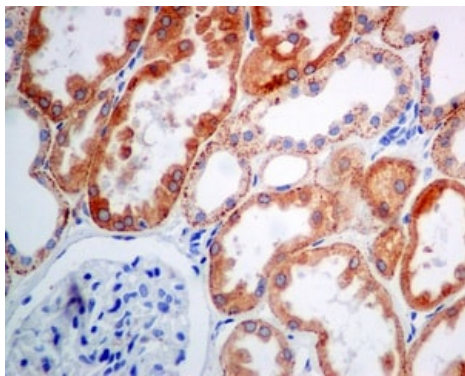
Predicted band size: 38 kDa

This data was developed using [ab133641](#), the same antibody clone in a different buffer formulation.



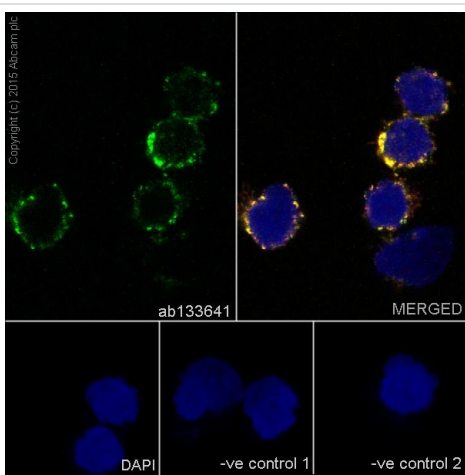
Immunohistochemistry (Formalin/PFA-fixed paraffin-embedded sections) - Anti-Cathepsin L/V/K/H antibody [EPR8011] - BSA and Azide free (ab248589)

This data was developed using [ab133641](#), the same antibody clone in a different buffer formulation. Immunohistochemistry (Formalin/PFA-fixed paraffin-embedded sections) analysis of human kidney tissue labelling Cathepsin L with purified [ab133641](#) at 1/100. Heat mediated antigen retrieval was performed using Tris/EDTA buffer pH 9. [ab97051](#), a HRP-conjugated goat anti-rabbit IgG (H+L) was used as the secondary antibody (1/500). Negative control using PBS instead of primary antibody. Counterstained with hematoxylin.



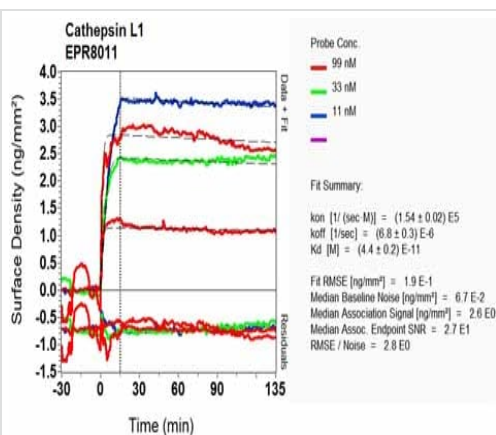
Immunohistochemistry (Formalin/PFA-fixed paraffin-embedded sections) - Anti-Cathepsin L/V/K/H antibody [EPR8011] - BSA and Azide free (ab248589)

This data was developed using [ab133641](#), the same antibody clone in a different buffer formulation. Immunohistochemistry (Formalin/PFA-fixed paraffin-embedded sections) analysis of human kidney tissue labelling Cathepsin L with unpurified [ab133641](#) at a 1/50 dilution. Perform heat mediated antigen retrieval with citrate buffer pH 6 before commencing with IHC staining protocol.



Immunocytochemistry/ Immunofluorescence - Anti-Cathepsin L/V/K/H antibody [EPR8011] - BSA and Azide free (ab248589)

This data was developed using [ab133641](#), the same antibody clone in a different buffer formulation. Immunocytochemistry/Immunofluorescence analysis of HT-29 cells labelling Cathepsin L with purified [ab133641](#) at 1/100. Cells were fixed with 100% methanol and permeabilized with 0.1% Triton X-100. [ab150077](#), an Alexa Fluor[®] 488-conjugated goat anti-rabbit IgG (1/500) was used as the secondary antibody. DAPI (blue) was used as the nuclear counterstain. [ab7291](#), a mouse anti-tubulin (1/500) and [ab150120](#), an Alexa Fluor[®] 594-conjugated goat anti-mouse IgG (1/500) were also used. Control 1: primary antibody (1/100) and secondary antibody, [ab150120](#), an Alexa Fluor[®] 594-conjugated goat anti-mouse IgG (1/500). Control 2: [ab7291](#) (1/1000) and secondary antibody, [ab150077](#), an Alexa Fluor[®] 488-conjugated goat anti-rabbit IgG (1/500).



OI-RD Scanning - Anti-Cathepsin L/V/K/H antibody [EPR8011] - BSA and Azide free (ab248589)

This data was developed using [ab133641](#), the same antibody clone in a different buffer formulation. Equilibrium disassociation constant (K_D)

Learn more about K_D

[Click here to learn more about \$K_D\$](#)

Why choose a recombinant antibody?



Research with confidence
Consistent and reproducible results



Long-term and scalable supply
Recombinant technology



Success from the first experiment
Confirmed specificity



Ethical standards compliant
Animal-free production

Anti-Cathepsin L/V/K/H antibody [EPR8011] - BSA
and Azide free (ab248589)

Please note: All products are "FOR RESEARCH USE ONLY. NOT FOR USE IN DIAGNOSTIC PROCEDURES"

Our Abpromise to you: Quality guaranteed and expert technical support

- Replacement or refund for products not performing as stated on the datasheet
- Valid for 12 months from date of delivery
- Response to your inquiry within 24 hours
- We provide support in Chinese, English, French, German, Japanese and Spanish
- Extensive multi-media technical resources to help you
- We investigate all quality concerns to ensure our products perform to the highest standards

If the product does not perform as described on this datasheet, we will offer a refund or replacement. For full details of the Abpromise, please visit <https://www.abcam.com/abpromise> or contact our technical team.

Terms and conditions

- Guarantee only valid for products bought direct from Abcam or one of our authorized distributors