


Product datasheet

Anti-Cathepsin Z antibody [EPR14357-7] ab182575

Recombinant **RabMAb**

★★★★★ [1 Abreviews](#) [3 References](#) [5 Images](#)

Overview

Product name	Anti-Cathepsin Z antibody [EPR14357-7]
Description	Rabbit monoclonal [EPR14357-7] to Cathepsin Z
Host species	Rabbit
Tested applications	Suitable for: Flow Cyt (Intra), WB, IP
Species reactivity	Reacts with: Human Predicted to work with: Mouse, Rat 
Immunogen	Recombinant fragment. This information is proprietary to Abcam and/or its suppliers.
Positive control	Human fetal liver and WI-38 lysate. HeLa cells and cell lysates.
General notes	<p>This product is a recombinant monoclonal antibody, which offers several advantages including:</p> <ul style="list-style-type: none"> - High batch-to-batch consistency and reproducibility - Improved sensitivity and specificity - Long-term security of supply - Animal-free production <p>For more information see here.</p> <p>Our RabMAb[®] technology is a patented hybridoma-based technology for making rabbit monoclonal antibodies. For details on our patents, please refer to RabMAb[®] patents.</p>

Properties

Form	Liquid
Storage instructions	Shipped at 4°C. Store at +4°C short term (1-2 weeks). Upon delivery aliquot. Store at -20°C long term. Avoid freeze / thaw cycle.
Storage buffer	pH: 7.2 Preservative: 0.01% Sodium azide Constituents: 59% PBS, 40% Glycerol (glycerin, glycerine), 0.05% BSA
Purity	Protein A purified
Clonality	Monoclonal
Clone number	EPR14357-7
Isotype	IgG

Applications

The Abpromise guarantee

Our **Abpromise guarantee** covers the use of ab182575 in the following tested applications.

The application notes include recommended starting dilutions; optimal dilutions/concentrations should be determined by the end user.

Application	Abreviews	Notes
Flow Cyt (Intra)		1/80. ab172730 - Rabbit monoclonal IgG, is suitable for use as an isotype control with this antibody.
WB	★★★★★ (1)	1/1000 - 1/10000. Detects a band of approximately 34 kDa (predicted molecular weight: 34 kDa).
IP		1/20 - 1/40.

Target

Function

Exhibits carboxy-monopeptidase as well as carboxy-dipeptidase activity.

Tissue specificity

Widely expressed.

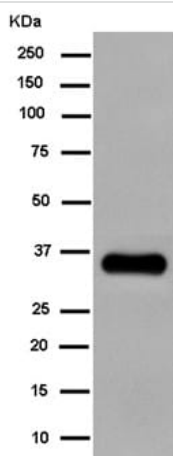
Sequence similarities

Belongs to the peptidase C1 family.

Cellular localization

Lysosome.

Images



Western blot - Anti-Cathepsin Z antibody
[EPR14357-7] (ab182575)

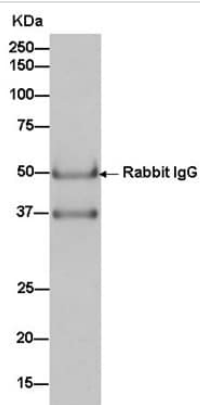
Anti-Cathepsin Z antibody [EPR14357-7] (ab182575) at 1/5000 dilution + WI-38 cell lysate at 20 µg

Secondary

Goat Anti-Rabbit IgG, (H+L), Peroxidase conjugated at 20 µg

Predicted band size: 34 kDa

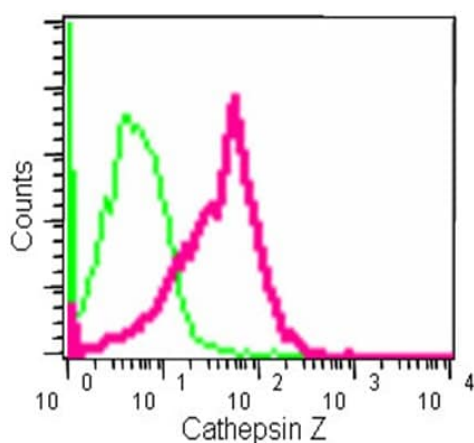
Observed band size: 34 kDa



Western blot analysis of Cathepsin Z in immunoprecipitation pellets from WI-38 lysate immunoprecipitated using ab182575 at 1/50 dilution.

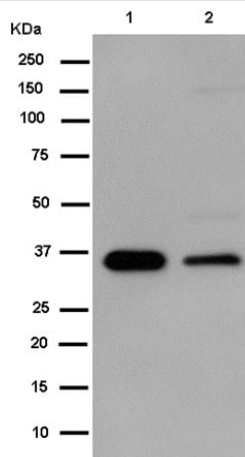
Secondary antibody: Goat Anti-Rabbit IgG, (H+L), Peroxidase conjugate at 1/1000 dilution.

Immunoprecipitation - Anti-Cathepsin Z antibody
[EPR14357-7] (ab182575)



Intracellular flow cytometric analysis of 2% paraformaldehyde-fixed HeLa cells labeling Cathepsin Z with ab182575 at 1/80 dilution (red) compared to a Rabbit monoclonal IgG isotype control (green), followed by Goat anti rabbit IgG (FITC) secondary antibody at 1/150 dilution.

Flow Cytometry (Intracellular) - Anti-Cathepsin Z
antibody [EPR14357-7] (ab182575)



Western blot - Anti-Cathepsin Z antibody
[EPR14357-7] (ab182575)

All lanes : Anti-Cathepsin Z antibody [EPR14357-7] (ab182575) at
1/2000 dilution

Lane 1 : Human fetal liver lysate

Lane 2 : HeLa lysate

Lysates/proteins at 20 µg per lane.

Secondary

All lanes : Goat Anti-Rabbit IgG, (H+L), Peroxidase conjugate at
1/1000 dilution

Predicted band size: 34 kDa

Observed band size: 34 kDa

Why choose a recombinant antibody?



Research with confidence
Consistent and reproducible results



Long-term and scalable supply
Recombinant technology



Success from the first experiment
Confirmed specificity



Ethical standards compliant
Animal-free production

Anti-Cathepsin Z antibody [EPR14357-7] (ab182575)

Please note: All products are "FOR RESEARCH USE ONLY. NOT FOR USE IN DIAGNOSTIC PROCEDURES"

Our Abpromise to you: Quality guaranteed and expert technical support

- Replacement or refund for products not performing as stated on the datasheet
- Valid for 12 months from date of delivery
- Response to your inquiry within 24 hours
- We provide support in Chinese, English, French, German, Japanese and Spanish
- Extensive multi-media technical resources to help you
- We investigate all quality concerns to ensure our products perform to the highest standards

If the product does not perform as described on this datasheet, we will offer a refund or replacement. For full details of the Abpromise, please visit <https://www.abcam.com/abpromise> or contact our technical team.

Terms and conditions

- Guarantee only valid for products bought direct from Abcam or one of our authorized distributors