




Product datasheet

Anti-Caveolin-1 antibody ab36152

★★★★★ [10 Abreviews](#) [8 References](#) [5 Images](#)

Overview

Product name	Anti-Caveolin-1 antibody
Description	Goat polyclonal to Caveolin-1
Host species	Goat
Specificity	No cross-reactivity expected to Caveolin-2 and Caveolin-3.
Tested applications	Suitable for: Flow Cyt (Intra), ICC, WB
Species reactivity	Reacts with: Human Predicted to work with: Mouse, Rat, Dog, Pig 
Immunogen	Synthetic peptide corresponding to Human Caveolin-1 aa 33-44 (internal sequence). Sequence: DELSEKQVYDAH Database link: Q03135 <div>  Run BLAST with  Run BLAST with </div>
Positive control	ICC: U-2 OS and A431 cells; WB: A549 and A431 cell lysates. Human heart tissue lysate. Flow Cyt (Intra): HeLa cells.
General notes	<p>The Life Science industry has been in the grips of a reproducibility crisis for a number of years. Abcam is leading the way in addressing this with our range of recombinant monoclonal antibodies and knockout edited cell lines for gold-standard validation. Please check that this product meets your needs before purchasing.</p> <p>If you have any questions, special requirements or concerns, please send us an inquiry and/or contact our Support team ahead of purchase. Recommended alternatives for this product can be found below, along with publications, customer reviews and Q&As</p>

Properties

Form	Liquid
Storage instructions	Shipped at 4°C. Upon delivery aliquot and store at -20°C. Avoid freeze / thaw cycles.
Storage buffer	pH: 7.30 Preservative: 0.02% Sodium azide Constituent: 0.5% BSA
Purity	Immunogen affinity purified

Purification notes	Purified from goat serum by ammonium sulphate precipitation followed by antigen affinity chromatography using the immunizing peptide.
Clonality	Polyclonal
Isotype	IgG

Applications

The Abpromise guarantee Our **Abpromise guarantee** covers the use of ab36152 in the following tested applications.

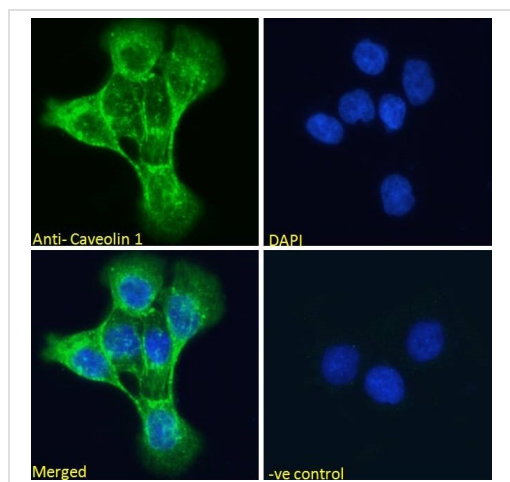
The application notes include recommended starting dilutions; optimal dilutions/concentrations should be determined by the end user.

Application	Abreviews	Notes
Flow Cyt (Intra)		Use a concentration of 10 µg/ml.
ICC		Use a concentration of 10 µg/ml.
WB	★★★★★ (3)	Use a concentration of 0.001 - 0.01 µg/ml. Detects a band of approximately 21, 25 kDa (predicted molecular weight: 20 kDa). 1 hour primary incubation is recommended for this product.

Target

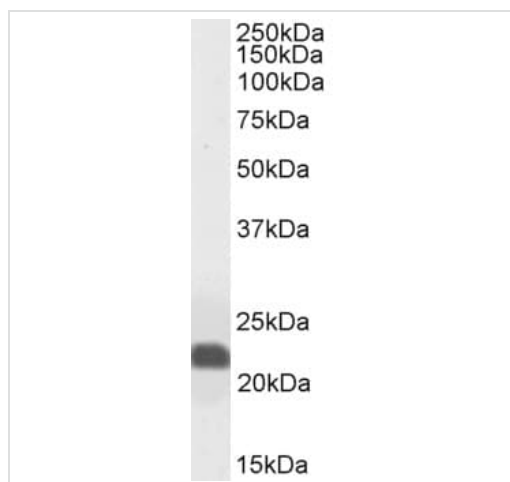
Function	May act as a scaffolding protein within caveolar membranes. Interacts directly with G-protein alpha subunits and can functionally regulate their activity (By similarity). Involved in the costimulatory signal essential for T-cell receptor (TCR)-mediated T-cell activation. Its binding to DPP4 induces T-cell proliferation and NF-kappa-B activation in a T-cell receptor/CD3-dependent manner. Recruits CTNNB1 to caveolar membranes and may regulate CTNNB1-mediated signaling through the Wnt pathway.
Tissue specificity	Expressed in muscle and lung, less so in liver, brain and kidney.
Involvement in disease	Defects in CAV1 are the cause of congenital generalized lipodystrophy type 3 (CGL3) [MIM:612526]; also called Berardinelli-Seip congenital lipodystrophy type 3 (BSCL3). Congenital generalized lipodystrophies are autosomal recessive disorders characterized by a near absence of adipose tissue, extreme insulin resistance, hypertriglyceridemia, hepatic steatosis and early onset of diabetes.
Sequence similarities	Belongs to the caveolin family.
Post-translational modifications	The initiator methionine for isoform Beta is removed during or just after translation. The new N-terminal amino acid is then N-acetylated.
Cellular localization	Golgi apparatus membrane. Cell membrane. Membrane > caveola. Membrane raft. Colocalized with DPP4 in membrane rafts. Potential hairpin-like structure in the membrane. Membrane protein of caveolae.

Images



Immunocytochemistry - Anti-Caveolin-1 antibody (ab36152)

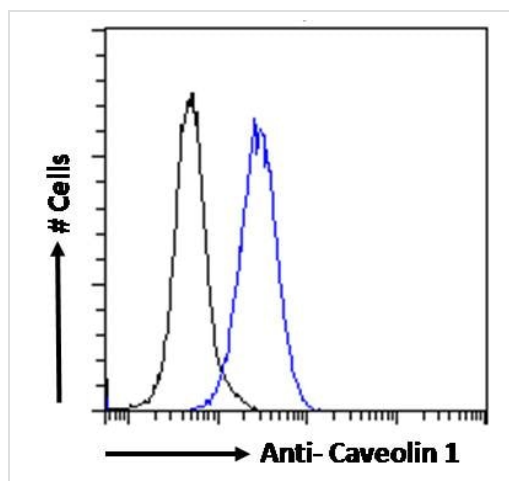
Immunocytochemistry analysis of paraformaldehyde fixed A431 (human epidermoid carcinoma cell line) cells labeling Caveolin-1 with ab36152 at 10 µg/mL. Cells permeabilized with 0.15% Triton. Primary incubation for 1 hour followed by Alexa Fluor® 488 secondary antibody at 2 µg/mL (green). The nuclear stain is DAPI (blue). Negative control: Unimmunized goat IgG (10 µg/mL) followed by Alexa Fluor® 488 secondary antibody at 2 µg/mL.



Western blot - Anti-Caveolin-1 antibody (ab36152)

Anti-Caveolin-1 antibody (ab36152) at 0.003 µg/ml + Human Heart lysate at 35 µg

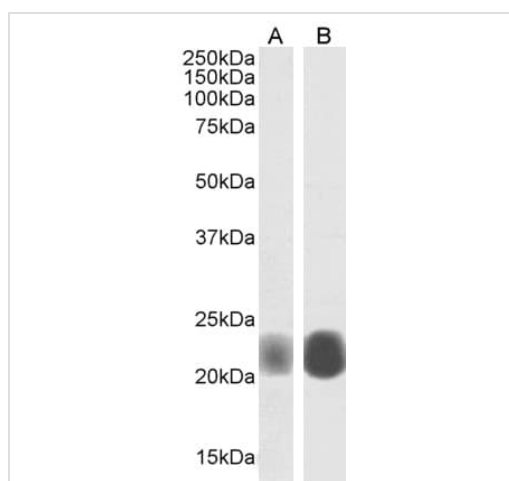
Predicted band size: 20 kDa



Flow Cytometry (Intracellular) - Anti-Caveolin-1 antibody (ab36152)

Flow Cytometry (Intracellular) analysis of paraformaldehyde fixed HeLa (human epithelial cell line from cervix adenocarcinoma) cells labeling Caveolin-1 with ab36152 at 10 µg/mL (blue line). Cells permeabilized with 0.5% Triton. Primary incubation overnight followed by Alexa Fluor® 488 secondary antibody at 1 µg/mL.

IgG control: Unimmunized goat IgG (black line) followed by Alexa Fluor® 488 secondary antibody.



Western blot - Anti-Caveolin-1 antibody (ab36152)

Lane 1 : Anti-Caveolin-1 antibody (ab36152) at 0.003 µg/ml

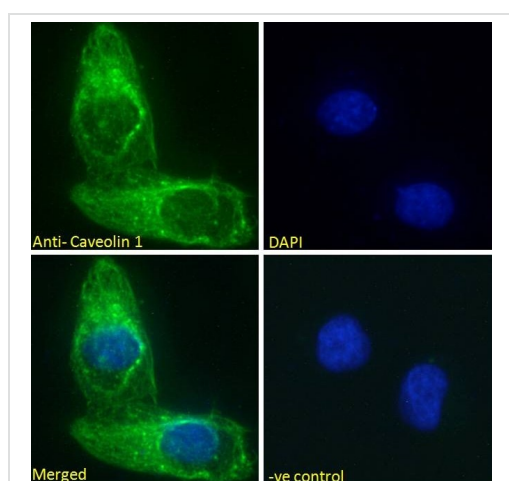
Lane 2 : Anti-Caveolin-1 antibody (ab36152) at 0.001 µg/ml

Lane 1 : A431 cell lysate

Lane 2 : A549 cell lysate

Lysates/proteins at 35 µg per lane.

Predicted band size: 20 kDa



Immunocytochemistry - Anti-Caveolin-1 antibody (ab36152)

Immunocytochemistry analysis of paraformaldehyde fixed U-2 OS (human bone osteosarcoma epithelial cell line) cells labeling Caveolin-1 with ab36152 at 10 µg/mL. Cells permeabilized with 0.15% Triton. Primary incubation for 1 hour followed by Alexa Fluor® 488 secondary antibody at 2 µg/mL (green). The nuclear stain is DAPI (blue). Negative control: Unimmunized goat IgG (10 µg/mL) followed by Alexa Fluor® 488 secondary antibody at 2 µg/mL.

Our Abpromise to you: Quality guaranteed and expert technical support

- Replacement or refund for products not performing as stated on the datasheet
- Valid for 12 months from date of delivery
- Response to your inquiry within 24 hours

- We provide support in Chinese, English, French, German, Japanese and Spanish
- Extensive multi-media technical resources to help you
- We investigate all quality concerns to ensure our products perform to the highest standards

If the product does not perform as described on this datasheet, we will offer a refund or replacement. For full details of the Abpromise, please visit <https://www.abcam.com/abpromise> or contact our technical team.

Terms and conditions

- Guarantee only valid for products bought direct from Abcam or one of our authorized distributors