

Anti-CBFb antibody ab125191

[5 References](#) [2 Images](#)

Overview

Product name	Anti-CBFb antibody
Description	Rabbit polyclonal to CBFb
Host species	Rabbit
Tested applications	Suitable for: WB, IP
Species reactivity	Reacts with: Mouse, Human
Immunogen	Synthetic peptide, corresponding to a region within amino acids 166-187 of Human CBFb (NP_074036.1).
Positive control	WB: HeLa, HEK-293T, TCMK, NIH/3T3 and Jurkat whole cell lysate. IP: Jurkat whole cell lysate.
General notes	<p>The Life Science industry has been in the grips of a reproducibility crisis for a number of years. Abcam is leading the way in addressing this with our range of recombinant monoclonal antibodies and knockout edited cell lines for gold-standard validation. Please check that this product meets your needs before purchasing.</p> <p>If you have any questions, special requirements or concerns, please send us an inquiry and/or contact our Support team ahead of purchase. Recommended alternatives for this product can be found below, along with publications, customer reviews and Q&As</p>

Properties

Form	Liquid
Storage instructions	Shipped at 4°C. Upon delivery aliquot and store at -20°C. Avoid freeze / thaw cycles.
Storage buffer	<p>pH: 7</p> <p>Preservative: 0.09% Sodium azide</p> <p>Constituent: 99% Tris citrate/phosphate</p>
Purity	pH 7 to 8
Clonality	Immunogen affinity purified
Isotype	Polyclonal
	IgG

Applications

The Abpromise guarantee

Our **Abpromise guarantee** covers the use of ab125191 in the following tested applications.

The application notes include recommended starting dilutions; optimal dilutions/concentrations should be determined by the end user.

Application	Abreviews	Notes
WB		1/2000 - 1/10000. Predicted molecular weight: 22 kDa.
IP		Use at 2-10 µg/mg of lysate.

Target

Function

CBF binds to the core site, 5'-PYGPYGGT-3', of a number of enhancers and promoters, including murine leukemia virus, polyomavirus enhancer, T-cell receptor enhancers, LCK, IL3 and GM-CSF promoters. CBFβ enhances DNA binding by RUNX1.

Involvement in disease

Note=A chromosomal aberration involving CBFβ is associated with acute myeloid leukemia of M4EO subtype. Pericentric inversion inv(16)(p13;q22). The inversion produces a fusion protein that consists of the 165 N-terminal residues of CBF-beta (PEPB2) with the tail region of MYH11.

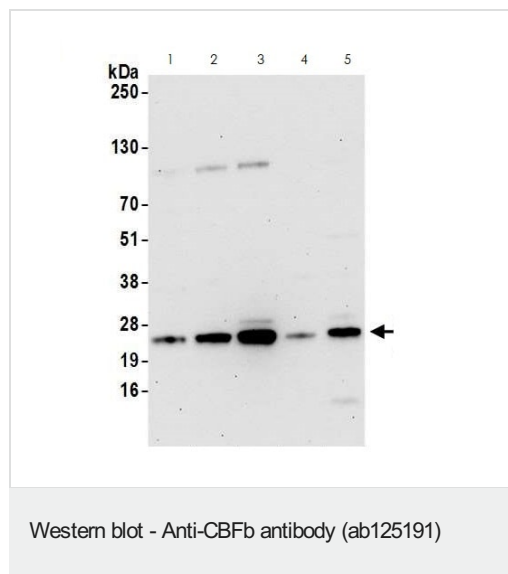
Sequence similarities

Belongs to the CBF-beta family.

Cellular localization

Nucleus.

Images



All lanes : Anti-CBFβ antibody (ab125191) at 0.1 µg/ml

Lane 1 : HeLa (Human epithelial cell line from cervix adenocarcinoma) whole cell lysate

Lane 2 : HEK-293T (Human epithelial cell line from embryonic kidney transformed with large T antigen) whole cell lysate

Lane 3 : Jurkat (Human T cell leukemia cell line from peripheral blood) whole cell lysate

Lane 4 : TCMK (Mouse kidney epithelial cell line) whole cell lysate

Lane 5 : NIH/3T3 (Mouse embryo fibroblast cell line) whole cell lysate

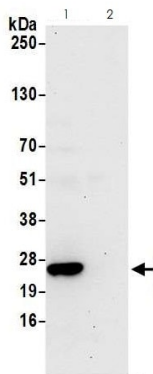
Lysates/proteins at 15 µg per lane.

Predicted band size: 22 kDa

Exposure time: 30 seconds

Cells prepared using NETN lysis buffer.

4-12% SDS-PAGE.



Immunoprecipitation - Anti-CBFb antibody
(ab125191)

Detection of human CBFb by western blot of immunoprecipitates.

Lane 1: Sample.

Lane 2: Control IgG.

Samples: Whole cell lysate (1.0 mg per IP reaction; 20% of IP loaded) from Jurkat (Human T cell leukemia cell line from peripheral blood) cells prepared using NETN lysis buffer.

Antibodies: ab125191 used for IP at 3 µg per reaction. For blotting immunoprecipitated CBFb ab125191 was used at 1 µg/ml.

Detection: Chemiluminescence with an exposure time of 30 seconds.

Please note: All products are "FOR RESEARCH USE ONLY. NOT FOR USE IN DIAGNOSTIC PROCEDURES"

Our Abpromise to you: Quality guaranteed and expert technical support

- Replacement or refund for products not performing as stated on the datasheet
- Valid for 12 months from date of delivery
- Response to your inquiry within 24 hours
- We provide support in Chinese, English, French, German, Japanese and Spanish
- Extensive multi-media technical resources to help you
- We investigate all quality concerns to ensure our products perform to the highest standards

If the product does not perform as described on this datasheet, we will offer a refund or replacement. For full details of the Abpromise, please visit <https://www.abcam.com/abpromise> or contact our technical team.

Terms and conditions

- Guarantee only valid for products bought direct from Abcam or one of our authorized distributors