


Product datasheet

Anti-Cbl-c antibody ab34750

★☆☆☆☆ [1 Abreviews](#) [1 Image](#)

Overview

Product name	Anti-Cbl-c antibody
Description	Rabbit polyclonal to Cbl-c
Host species	Rabbit
Specificity	No reactivity is expected with Cbl-a or Cbl-b.
Tested applications	Suitable for: WB
Species reactivity	Reacts with: Recombinant fragment Predicted to work with: Mouse, Rat, Human, Chimpanzee 
Immunogen	Synthetic peptide: PRKPRNAQPKVRLK , corresponding to amino acids 444-458 of Human Cbl-c Run BLAST with Run BLAST with
General notes	The Life Science industry has been in the grips of a reproducibility crisis for a number of years. Abcam is leading the way in addressing this with our range of recombinant monoclonal antibodies and knockout edited cell lines for gold-standard validation. Please check that this product meets your needs before purchasing. If you have any questions, special requirements or concerns, please send us an inquiry and/or contact our Support team ahead of purchase. Recommended alternatives for this product can be found below, along with publications, customer reviews and Q&As

Properties

Form	Liquid
Storage instructions	Shipped at 4°C. Upon delivery aliquot and store at -20°C or -80°C. Avoid repeated freeze / thaw cycles.
Storage buffer	Preservative: 0.01% Sodium azide Constituents: 0.42% Potassium phosphate, 0.87% Sodium chloride
Purity	Immunogen affinity purified
Purification notes	The product was affinity purified from monospecific antiserum by immunoaffinity purification.
Clonality	Polyclonal
Isotype	IgG

Applications

The Abpromise guarantee

Our **Abpromise guarantee** covers the use of ab34750 in the following tested applications.

The application notes include recommended starting dilutions; optimal dilutions/concentrations should be determined by the end user.

Application	Abreviews	Notes
WB	★ ★ ★ ★ ★ (1)	1/500 - 1/3000. Predicted molecular weight: 52 kDa.

Target

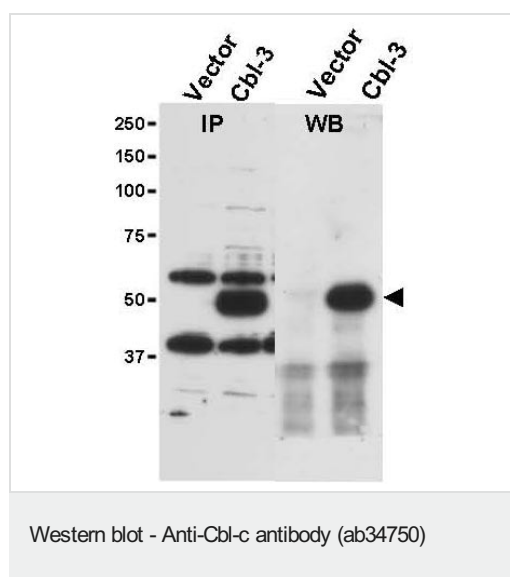
Relevance

Cblc belongs to a family of ubiquitin protein ligases (E3s) that negatively regulate signaling by targeting activated tyrosine kinases for degradation. Cblc is the most recently cloned member of the Cbl proteins and is expressed only in epithelial cells (the other Cbl proteins are ubiquitous). Cblc, like the other mammalian Cbl proteins, can ubiquitinate the activated EGFR and target it for degradation. Cblc knock out mice show no obvious phenotype. Thus, the physiological role of Cblc is not known.

Cellular localization

Nuclear

Images



All lanes : Anti-Cbl-c antibody (ab34750) at 1/500 dilution

Lanes 1 & 3 : Hek 293T cell lysate transfected with empty vector

Lanes 2 & 4 : Hek 293T cell lysate transfected with Cbl-c.

Predicted band size: 52 kDa

Observed band size: 52 kDa

The right panel shows western blotting after first immunoprecipitating with Rabbit anti- Cbl-c followed by immunoblotting.

Please note: All products are "FOR RESEARCH USE ONLY. NOT FOR USE IN DIAGNOSTIC PROCEDURES"

Our Abpromise to you: Quality guaranteed and expert technical support

- Replacement or refund for products not performing as stated on the datasheet
- Valid for 12 months from date of delivery
- Response to your inquiry within 24 hours

- We provide support in Chinese, English, French, German, Japanese and Spanish
- Extensive multi-media technical resources to help you
- We investigate all quality concerns to ensure our products perform to the highest standards

If the product does not perform as described on this datasheet, we will offer a refund or replacement. For full details of the Abpromise, please visit <https://www.abcam.com/abpromise> or contact our technical team.

Terms and conditions

- Guarantee only valid for products bought direct from Abcam or one of our authorized distributors