

Anti-CBR1 antibody [EPR9660] - BSA and Azide free ab249278

KO VALIDATED

Recombinant

RabMAb

8 Images

Overview

Product name	Anti-CBR1 antibody [EPR9660] - BSA and Azide free
Description	Rabbit monoclonal [EPR9660] to CBR1 - BSA and Azide free
Host species	Rabbit
Tested applications	Suitable for: IHC-P, ICC/IF, WB Unsuitable for: Flow Cyt or IP
Species reactivity	Reacts with: Human
Immunogen	Synthetic peptide. This information is proprietary to Abcam and/or its suppliers.
Positive control	WB: A549 and HeLa cell lysates.
General notes	<p>ab249278 is the carrier-free version of ab156590.</p> <p>Our carrier-free antibodies are typically supplied in a PBS-only formulation, purified and free of BSA, sodium azide and glycerol. The carrier-free buffer and high concentration allow for increased conjugation efficiency.</p> <p>This conjugation-ready format is designed for use with fluorochromes, metal isotopes, oligonucleotides, and enzymes, which makes them ideal for antibody labelling, functional and cell-based assays, flow-based assays (e.g. mass cytometry) and Multiplex Imaging applications.</p> <p>Use our conjugation kits for antibody conjugates that are ready-to-use in as little as 20 minutes with <1 minute hands-on-time and 100% antibody recovery: available for fluorescent dyes, HRP, biotin and gold.</p> <p>This product is compatible with the Maxpar[®] Antibody Labeling Kit from Fluidigm, without the need for antibody preparation. Maxpar[®] is a trademark of Fluidigm Canada Inc.</p> <p>This product is a recombinant monoclonal antibody, which offers several advantages including:</p> <ul style="list-style-type: none"> - High batch-to-batch consistency and reproducibility - Improved sensitivity and specificity - Long-term security of supply - Animal-free production <p>For more information see here.</p> <p>Our RabMAb[®] technology is a patented hybridoma-based technology for making rabbit monoclonal antibodies. For details on our patents, please refer to RabMAb[®] patents.</p>

Rat: We have preliminary internal testing data to indicate this antibody may not react with this species. Please contact us for more information.

Properties

Form	Liquid
Storage instructions	Shipped at 4°C. Store at +4°C. Do Not Freeze.
Storage buffer	pH: 7.2 Constituent: PBS
Carrier free	Yes
Purity	Protein A purified
Clonality	Monoclonal
Clone number	EPR9660
Isotype	IgG

Applications

The Abpromise guarantee Our [Abpromise guarantee](#) covers the use of ab249278 in the following tested applications. The application notes include recommended starting dilutions; optimal dilutions/concentrations should be determined by the end user.

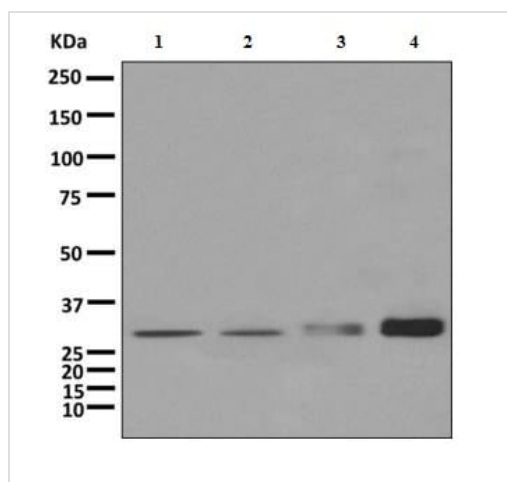
Application	Abreviews	Notes
IHC-P		Use at an assay dependent concentration. Perform heat mediated antigen retrieval before commencing with IHC staining protocol.
ICC/IF		Use at an assay dependent concentration.
WB		Use at an assay dependent concentration. Predicted molecular weight: 30 kDa.

Application notes Is unsuitable for Flow Cyt or IP.

Target

Function	NADPH-dependent reductase with broad substrate specificity. Catalyzes the reduction of a wide variety of carbonyl compounds including quinones, prostaglandins, menadione, plus various xenobiotics. Catalyzes the reduction of the antitumor anthracyclines doxorubicin and daunorubicin to the cardiotoxic compounds doxorubicinol and daunorubicinol. Can convert prostaglandin E2 to prostaglandin F2-alpha. Can bind glutathione, which explains its higher affinity for glutathione-conjugated substrates. Catalyzes the reduction of S-nitrosoglutathione.
Sequence similarities	Belongs to the short-chain dehydrogenases/reductases (SDR) family.
Cellular localization	Cytoplasm.

Images



Western blot - Anti-CBR1 antibody [EPR9660] - BSA and Azide free (ab249278)

All lanes : Anti-CBR1 antibody [EPR9660] ([ab156590](#)) at 1/1000 dilution

Lane 1 : HeLa cell lysate

Lane 2 : 293T cell lysate

Lane 3 : SH-SY5Y cell lysate

Lane 4 : Human fetal kidney lysate

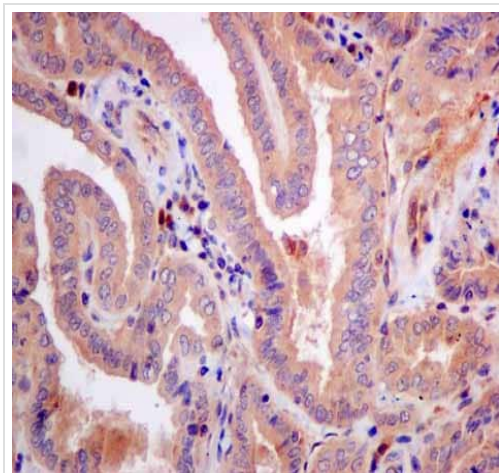
Lysates/proteins at 10 µg per lane.

Secondary

All lanes : Goat anti-rabbit HRP at 1/2000 dilution

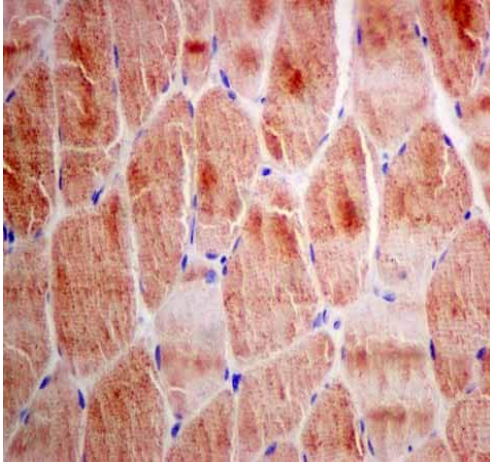
Predicted band size: 30 kDa

This data was developed using [ab156590](#), the same antibody clone in a different buffer formulation.



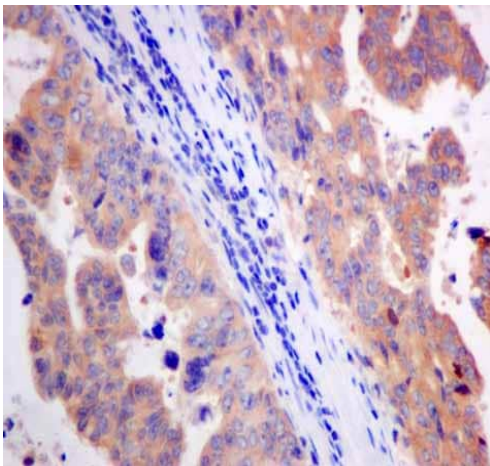
Immunohistochemistry (Formalin/PFA-fixed paraffin-embedded sections) - Anti-CBR1 antibody [EPR9660] - BSA and Azide free (ab249278)

This data was developed using [ab156590](#), the same antibody clone in a different buffer formulation. [ab156590](#) showing +ve staining in Human thyroid gland carcinoma. Perform heat mediated antigen retrieval before commencing with IHC staining protocol.



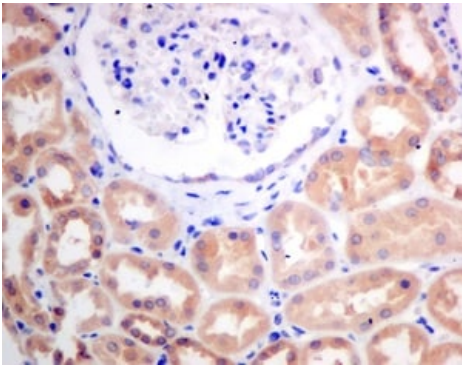
Immunohistochemistry (Formalin/PFA-fixed paraffin-embedded sections) - Anti-CBR1 antibody
[EPR9660] - BSA and Azide free (ab249278)

This data was developed using [ab156590](#), the same antibody clone in a different buffer formulation. [ab156590](#) showing +ve staining in Human skeletal muscle. Perform heat mediated antigen retrieval before commencing with IHC staining protocol.



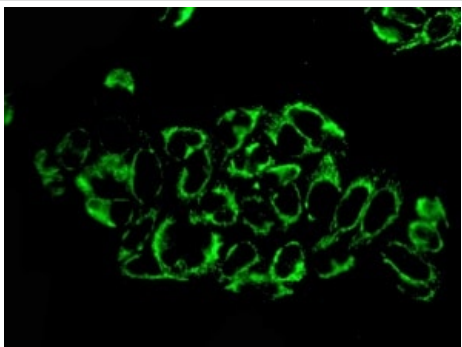
Immunohistochemistry (Formalin/PFA-fixed paraffin-embedded sections) - Anti-CBR1 antibody
[EPR9660] - BSA and Azide free (ab249278)

This data was developed using [ab156590](#), the same antibody clone in a different buffer formulation. [ab156590](#) showing +ve staining in Human gastric carcinoma. Perform heat mediated antigen retrieval before commencing with IHC staining protocol.



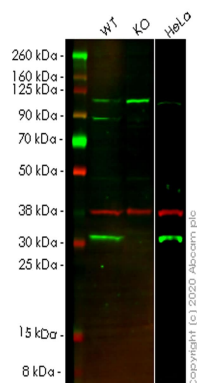
Immunohistochemistry (Formalin/PFA-fixed paraffin-embedded sections) - Anti-CBR1 antibody [EPR9660] - BSA and Azide free (ab249278)

This data was developed using [**ab156590**](#), the same antibody clone in a different buffer formulation. Immunohistochemical analysis of paraffin-embedded Human kidney tissue labeling CBR1 with [**ab156590**](#) at 1/50 dilution. Perform heat mediated antigen retrieval before commencing with IHC staining protocol.



Immunocytochemistry/ Immunofluorescence - Anti-CBR1 antibody [EPR9660] - BSA and Azide free (ab249278)

This data was developed using [**ab156590**](#), the same antibody clone in a different buffer formulation. Immunofluorescent analysis of HeLa cells labeling CBR1 with [**ab156590**](#) at 1/50 dilution.



Western blot - Anti-CBR1 antibody [EPR9660] - BSA and Azide free (ab249278)

All lanes : Anti-CBR1 antibody [EPR9660] ([ab156590](#)) at 1/1000 dilution

Lane 1 : Wild-type A549 cell lysate

Lane 2 : CBR1 knockout A549 cell lysate

Lane 3 : HeLa cell lysate

Lysates/proteins at 20 µg per lane.

Secondary

All lanes : Goat anti-Rabbit IgG H&L (IRDye® 800CW) preadsorbed ([ab216773](#)) at 1/10000 dilution

Predicted band size: 30 kDa

Observed band size: 30 kDa

This data was developed using the same antibody clone in a different buffer formulation ([ab156590](#)).

Lanes 1-3: Merged signal (red and green). Green - [ab156590](#) observed at 30 kDa. Red - loading control [ab8245](#) observed at 36 kDa.

[ab156590](#) Anti-CBR1 antibody [EPR9660] was shown to specifically react with CBR1 in wild-type A549 cells. Loss of signal was observed when knockout cell line [ab266954](#) (knockout cell lysate [ab257874](#)) was used. Wild-type and CBR1 knockout samples were subjected to SDS-PAGE. [ab156590](#) and Anti-GAPDH antibody [6C5] - Loading Control ([ab8245](#)) were incubated overnight at 4°C at 1 in 1000 dilution and 1 in 20000 dilution respectively. Blots were developed with Goat anti-Rabbit IgG H&L (IRDye® 800CW) preadsorbed ([ab216773](#)) and Goat anti-Mouse IgG H&L (IRDye® 680RD) preadsorbed ([ab216776](#)) secondary antibodies at 1 in 20000 dilution for 1 hour at room temperature before imaging.

Why choose a recombinant antibody?



Research with confidence
Consistent and reproducible results



Long-term and scalable supply
Recombinant technology



Success from the first experiment
Confirmed specificity



Ethical standards compliant
Animal-free production

Anti-CBR1 antibody [EPR9660] - BSA and Azide free (ab249278)

Please note: All products are "FOR RESEARCH USE ONLY. NOT FOR USE IN DIAGNOSTIC PROCEDURES"

Our Abpromise to you: Quality guaranteed and expert technical support

- Replacement or refund for products not performing as stated on the datasheet
- Valid for 12 months from date of delivery
- Response to your inquiry within 24 hours
- We provide support in Chinese, English, French, German, Japanese and Spanish
- Extensive multi-media technical resources to help you
- We investigate all quality concerns to ensure our products perform to the highest standards

If the product does not perform as described on this datasheet, we will offer a refund or replacement. For full details of the Abpromise, please visit <https://www.abcam.com/abpromise> or contact our technical team.

Terms and conditions

- Guarantee only valid for products bought direct from Abcam or one of our authorized distributors