

Product datasheet

Anti-CCBL1 antibody ab224432

2 Images

Overview

Product name	Anti-CCBL1 antibody
Description	Rabbit polyclonal to CCBL1
Host species	Rabbit
Tested applications	Suitable for: ICC/IF, IHC-P
Species reactivity	Reacts with: Human
Immunogen	Recombinant fragment corresponding to Human CCBL1 aa 100-200. Database link: Q16773 Run BLAST with Run BLAST with
Positive control	IHC-P: Human stomach tissue. ICC/IF: U-2 OS cells.
General notes	<p>The Life Science industry has been in the grips of a reproducibility crisis for a number of years. Abcam is leading the way in addressing this with our range of recombinant monoclonal antibodies and knockout edited cell lines for gold-standard validation. Please check that this product meets your needs before purchasing.</p> <p>If you have any questions, special requirements or concerns, please send us an inquiry and/or contact our Support team ahead of purchase. Recommended alternatives for this product can be found below, along with publications, customer reviews and Q&As</p>

Properties

Form	Liquid
Storage instructions	Shipped at 4°C. Store at +4°C short term (1-2 weeks). Upon delivery aliquot. Store at -20°C long term. Avoid freeze / thaw cycle.
Storage buffer	pH: 7.20 Preservative: 0.02% Sodium azide Constituents: 40% Glycerol (glycerin, glycerine), PBS
Purity	Immunogen affinity purified
Clonality	Polyclonal
Isotype	IgG

Applications

The Abpromise guarantee

Our **Abpromise guarantee** covers the use of ab224432 in the following tested applications.

The application notes include recommended starting dilutions; optimal dilutions/concentrations should be determined by the end user.

Application	Abreviews	Notes
ICC/IF		Use a concentration of 0.25 - 2 µg/ml. Fixation/Permeabilization: PFA/Triton X-100.
IHC-P		1/200 - 1/500. Perform heat mediated antigen retrieval with citrate buffer pH 6 before commencing with IHC staining protocol.

Target

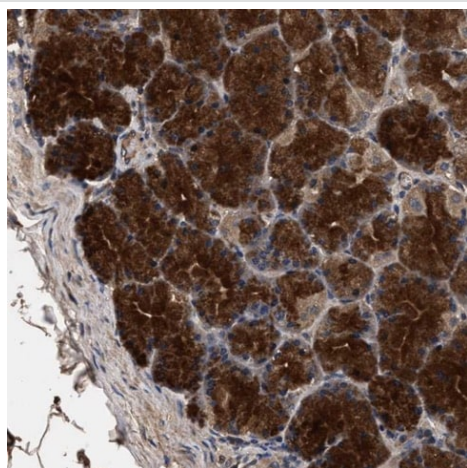
Relevance

CCBL1 is a cytosolic enzyme which is responsible for the metabolism of cysteine conjugates of certain halogenated alkenes and alkanes. This metabolism leads to the formation of reactive metabolites which can lead to nephrotoxicity and neurotoxicity. CCBL1 catalyzes the irreversible transamination of the L-tryptophan metabolite L-kinurenine to form kynurenic acid (KA). It catalyzes the beta-elimination of S-conjugates and Se-conjugates of L-(seleno)cysteine, resulting in the cleavage of the C-S or C-Se bond. This enzyme has a central role in the bioactivation of nephrotoxic halogenated hydrocarbons - the possibility of human exposure to these chemicals has focused interest on the CCBL1 from human kidney.

Cellular localization

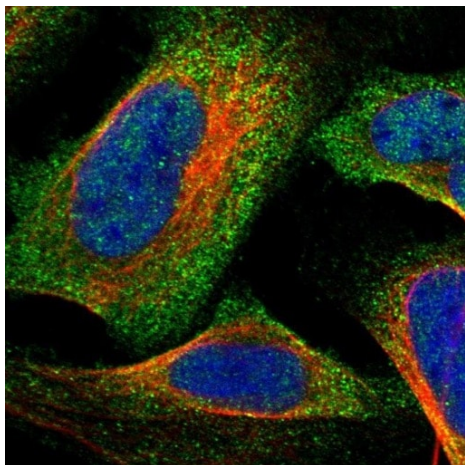
Cytoplasmic

Images



Paraffin-embedded human stomach tissue stained for CCBL1 using ab224432 at 1/200 dilution in immunohistochemical analysis.

Immunohistochemistry (Formalin/PFA-fixed paraffin-embedded sections) - Anti-CCBL1 antibody (ab224432)



PFA-fixed, Triton X-100 permeabilized U-2 OS (human bone osteosarcoma epithelial cell line) cells stained for CCBL1 (green) using ab224432 at 4 µg/ml in ICC/IF.

Immunocytochemistry/ Immunofluorescence - Anti-CCBL1 antibody (ab224432)

Please note: All products are "FOR RESEARCH USE ONLY. NOT FOR USE IN DIAGNOSTIC PROCEDURES"

Our Abpromise to you: Quality guaranteed and expert technical support

- Replacement or refund for products not performing as stated on the datasheet
- Valid for 12 months from date of delivery
- Response to your inquiry within 24 hours
- We provide support in Chinese, English, French, German, Japanese and Spanish
- Extensive multi-media technical resources to help you
- We investigate all quality concerns to ensure our products perform to the highest standards

If the product does not perform as described on this datasheet, we will offer a refund or replacement. For full details of the Abpromise, please visit <https://www.abcam.com/abpromise> or contact our technical team.

Terms and conditions

- Guarantee only valid for products bought direct from Abcam or one of our authorized distributors