



Product datasheet

Anti-CCDC39 antibody ab122269

[2 Images](#)

Overview

Product name	Anti-CCDC39 antibody
Description	Rabbit polyclonal to CCDC39
Host species	Rabbit
Tested applications	Suitable for: WB, IHC-P
Species reactivity	Reacts with: Human
Immunogen	<p>Recombinant fragment corresponding to Human CCDC39 aa 191-288. Sequence:</p> <p>ILDNELTETISAQLELDKAAQDFRKIHNERQELIKQWENTIE QMQRDGD IDNCALELARIKQETREKENLVKEKIKFLESEIGNNTEFEKRI SVADR</p> <p>Database link: Q9UFE4</p> <p> Run BLAST with  Run BLAST with</p>
Positive control	RT-4 lysate, Human pancreas tissue
General notes	<p>The Life Science industry has been in the grips of a reproducibility crisis for a number of years. Abcam is leading the way in addressing this with our range of recombinant monoclonal antibodies and knockout edited cell lines for gold-standard validation. Please check that this product meets your needs before purchasing.</p> <p>If you have any questions, special requirements or concerns, please send us an inquiry and/or contact our Support team ahead of purchase. Recommended alternatives for this product can be found below, along with publications, customer reviews and Q&As</p>

Properties

Form	Liquid
Storage instructions	Shipped at 4°C. Upon delivery aliquot and store at -20°C. Avoid freeze / thaw cycles.
Storage buffer	<p>pH: 7.20</p> <p>Preservative: 0.02% Sodium azide</p> <p>Constituents: 40% Glycerol (glycerin, glycerine), 59% PBS</p>
Purity	Immunogen affinity purified

Clonality	Polyclonal
Isotype	IgG

Applications

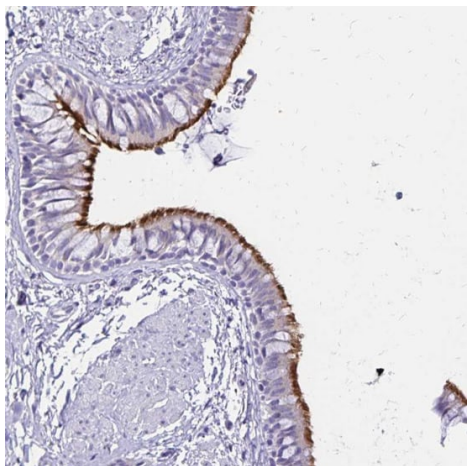
The Abpromise guarantee Our **Abpromise guarantee** covers the use of ab122269 in the following tested applications. The application notes include recommended starting dilutions; optimal dilutions/concentrations should be determined by the end user.

Application	Abreviews	Notes
WB		Use a concentration of 0.04 - 0.4 µg/ml.
IHC-P		1/200 - 1/500. Perform heat mediated antigen retrieval with citrate buffer pH 6 before commencing with IHC staining protocol.

Target

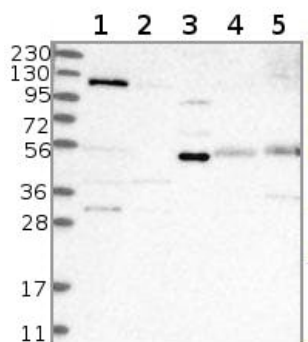
Function	Required for assembly of dynein regulatory complex (DRC) and inner dynein arm complexes, which are responsible for ciliary beat regulation, thereby playing a central role in motility in cilia and flagella. Not required for outer dynein arm complexes assembly.
Tissue specificity	Mainly expressed in nasal brushings and, to a lesser extent, in lungs and testis.
Involvement in disease	Defects in CCDC39 are the cause of primary ciliary dyskinesia type 14 (CILD14) [MIM:613807]. A disorder characterized by abnormalities of motile cilia. Respiratory infections leading to chronic inflammation and bronchiectasis are recurrent, due to defects in the respiratory cilia; reduced fertility is often observed in male patients due to abnormalities of sperm tails. Half of the patients exhibit randomization of left-right body asymmetry and situs inversus, due to dysfunction of monocilia at the embryonic node. Primary ciliary dyskinesia associated with situs inversus is referred to as Kartagener syndrome.
Sequence similarities	Belongs to the CCDC39 family.
Cellular localization	Cytoplasm > cytoskeleton > cilium axoneme. CCDC40 is required for localization to axonemes.

Images



Immunohistochemistry (Formalin/PFA-fixed paraffin-embedded sections) - Anti-CCDC39 antibody (ab122269)

Immunohistochemistry (Formalin/PFA-fixed paraffin-embedded sections) analysis of human bronchus tissue labelling CCDC39 with ab122269. Staining shows strong positivity in cilia of respiratory epithelial cells.



Western blot - Anti-CCDC39 antibody (ab122269)

All lanes : Anti-CCDC39 antibody (ab122269) at 1/250 dilution

Lane 1 : RT-4 lysate

Lane 2 : U251-MG lysate

Lane 3 : Human plasma lysate

Lane 4 : Human liver lysate

Lane 5 : Human tonsil lysate

Please note: All products are "FOR RESEARCH USE ONLY. NOT FOR USE IN DIAGNOSTIC PROCEDURES"

Our Abpromise to you: Quality guaranteed and expert technical support

- Replacement or refund for products not performing as stated on the datasheet
- Valid for 12 months from date of delivery
- Response to your inquiry within 24 hours
- We provide support in Chinese, English, French, German, Japanese and Spanish
- Extensive multi-media technical resources to help you
- We investigate all quality concerns to ensure our products perform to the highest standards

If the product does not perform as described on this datasheet, we will offer a refund or replacement. For full details of the Abpromise, please visit <https://www.abcam.com/abpromise> or contact our technical team.

Terms and conditions

- Guarantee only valid for products bought direct from Abcam or one of our authorized distributors