


Anti-CCDC52 antibody ab117801

[2 Images](#)

Overview

Product name	Anti-CCDC52 antibody
Description	Rabbit polyclonal to CCDC52
Host species	Rabbit
Tested applications	Suitable for: WB, IP
Species reactivity	Reacts with: Human Predicted to work with: Rabbit, Horse, Cow, Dog, Chimpanzee, Rhesus monkey, Gorilla, Orangutan, Elephant 
Immunogen	Synthetic peptide, corresponding to a region between amino acids 805-855 of Human CCDC52 (NP_653319.1).
Positive control	HeLa and 293T whole cell lysates.
General notes	<p>The Life Science industry has been in the grips of a reproducibility crisis for a number of years. Abcam is leading the way in addressing this with our range of recombinant monoclonal antibodies and knockout edited cell lines for gold-standard validation. Please check that this product meets your needs before purchasing.</p> <p>If you have any questions, special requirements or concerns, please send us an inquiry and/or contact our Support team ahead of purchase. Recommended alternatives for this product can be found below, along with publications, customer reviews and Q&As</p>

Properties

Form	Liquid
Storage instructions	Shipped at 4°C. Upon delivery aliquot and store at -20°C. Avoid freeze / thaw cycles.
Storage buffer	<p>pH: 7</p> <p>Preservative: 0.09% Sodium azide</p> <p>Constituent: 99% Tris citrate/phosphate</p>
Purity	pH 7-8 Immunogen affinity purified
Purification notes	ab117801 was affinity purified using an epitope specific to CCDC52 immobilized on solid support.
Clonality	Polyclonal

Isotype

IgG

Applications

The Abpromise guarantee

Our **Abpromise guarantee** covers the use of ab117801 in the following tested applications.

The application notes include recommended starting dilutions; optimal dilutions/concentrations should be determined by the end user.

Application	Abreviews	Notes
WB		1/2000 - 1/10000. Predicted molecular weight: 96 kDa.
IP		Use at 2-10 µg/mg of lysate.

Target

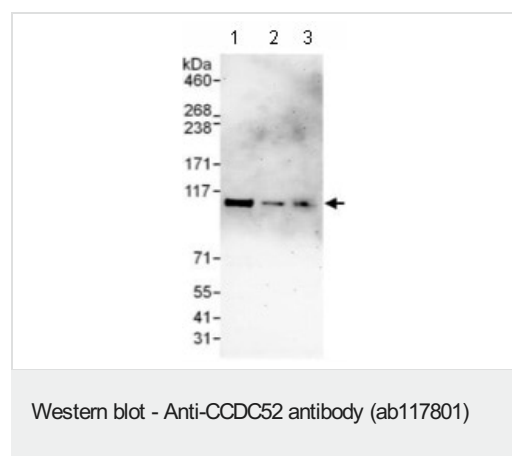
Function

Regulator required for centriole duplication, for proper bipolar spindle formation and chromosome congression in mitosis.

Cellular localization

Cytoplasm > cytoskeleton > centrosome > centriole. Cytoplasm > cytoskeleton > spindle.

Images



All lanes : Anti-CCDC52 antibody (ab117801) at 0.1 µg/ml

Lane 1 : 293T whole cell lysate at 50 µg

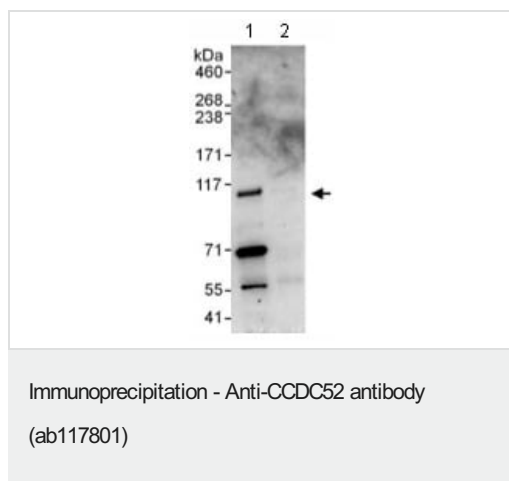
Lane 2 : 293T whole cell lysate at 15 µg

Lane 3 : HeLa whole cell lysate at 50 µg

Developed using the ECL technique.

Predicted band size: 96 kDa

Exposure time: 3 minutes



Lane 1: **ab1177801** at 1 µg/ml staining CCDC52 in 293T cell lysate immunoprecipitated using ab117801 at 6 µg/mg lysate (1 mg/IP; 20% of IP loaded/lane). Lane 2: control IgG. Predicted band size : 96 kDa. Exposure time: 10 seconds

Please note: All products are "FOR RESEARCH USE ONLY. NOT FOR USE IN DIAGNOSTIC PROCEDURES"

Our Abpromise to you: Quality guaranteed and expert technical support

- Replacement or refund for products not performing as stated on the datasheet
- Valid for 12 months from date of delivery
- Response to your inquiry within 24 hours
- We provide support in Chinese, English, French, German, Japanese and Spanish
- Extensive multi-media technical resources to help you
- We investigate all quality concerns to ensure our products perform to the highest standards

If the product does not perform as described on this datasheet, we will offer a refund or replacement. For full details of the Abpromise, please visit <https://www.abcam.com/abpromise> or contact our technical team.

Terms and conditions

- Guarantee only valid for products bought direct from Abcam or one of our authorized distributors