

Anti-CCDC65 antibody ab122482

3 Images

Overview

| | |
|----------------------------|---|
| Product name | Anti-CCDC65 antibody |
| Description | Rabbit polyclonal to CCDC65 |
| Host species | Rabbit |
| Tested applications | Suitable for: IHC-P, WB, ICC/IF |
| Species reactivity | Reacts with: Human |
| Immunogen | antigen sequence: SSVLTPEQE GIQKNNLEEL TEELTKVMVD YIGMENFWKR YNKVKLEQLS LQHRRALLD INGKLREMLK QYLDGISVSD EVLSQ, corresponding to amino acids 368-452 of Human CCDC65 (Q8IXS2). Run BLAST with Expasy Run BLAST with NCBI |
| Positive control | Human prostate tissue. Human Plasma lysate. Human tonsil tissue lysate. |
| General notes | <p>The Life Science industry has been in the grips of a reproducibility crisis for a number of years. Abcam is leading the way in addressing this with our range of recombinant monoclonal antibodies and knockout edited cell lines for gold-standard validation. Please check that this product meets your needs before purchasing.</p> <p>If you have any questions, special requirements or concerns, please send us an inquiry and/or contact our Support team ahead of purchase. Recommended alternatives for this product can be found below, along with publications, customer reviews and Q&As</p> |

Properties

| | |
|-----------------------------|---|
| Form | Liquid |
| Storage instructions | Shipped at 4°C. Upon delivery aliquot and store at -20°C. Avoid freeze / thaw cycles. |
| Storage buffer | pH: 7.20 Preservative: 0.02% Sodium azide Constituents: 59% PBS, 40% Glycerol (glycerin, glycerine) |
| Purity | Immunogen affinity purified |
| Clonality | Polyclonal |
| Isotype | IgG |

Applications

The Abpromise guarantee

Our **Abpromise guarantee** covers the use of ab122482 in the following tested applications.

The application notes include recommended starting dilutions; optimal dilutions/concentrations should be determined by the end user.

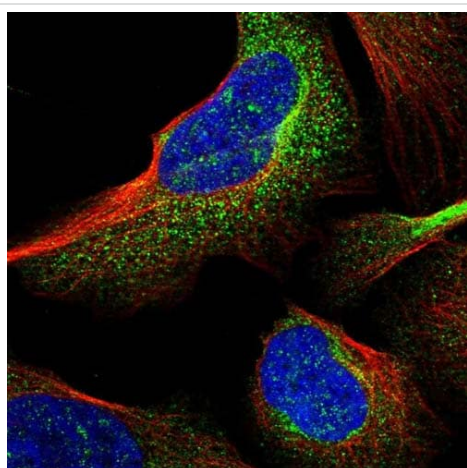
| Application | Abreviews | Notes |
|-------------|-----------|---|
| IHC-P | | 1/200 - 1/500. Perform heat mediated antigen retrieval with citrate buffer pH 6 before commencing with IHC staining protocol. |
| WB | | 1/250 - 1/500. |
| ICC/IF | | Use a concentration of 1 - 4 µg/ml. Recommend PFA Fixation and Triton X-100 treatment |

Target

Tissue specificity

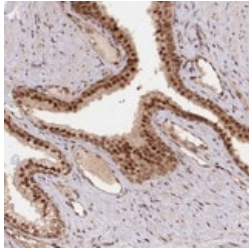
Highly expressed in adult testis, in spermatocytes and spermatids. Also observed in spermatogonia. Not detected in Leydig cells, nor in fetal testis (at protein level).

Images



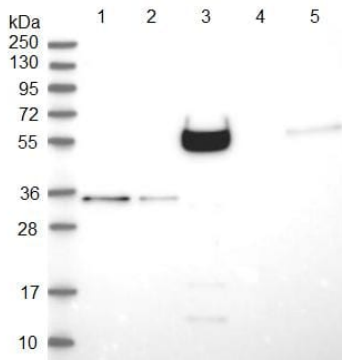
Immunofluorescent staining of Human cell line U-2 OS shows positivity in nucleus and cytoplasm. Recommended concentration of ab122482 1-4 µg/ml. Cells treated with PFA/Triton X-100.

Immunocytochemistry/ Immunofluorescence - Anti-CCDC65 antibody (ab122482)



ab122482 at 1/200 dilution staining CCDC65 in paraffin-embedded Human prostate tissue by Immunohistochemistry.

Immunohistochemistry (Formalin/PFA-fixed paraffin-embedded sections) - Anti-CCDC65 antibody (ab122482)



All lanes : Anti-CCDC65 antibody (ab122482) at 1/250 dilution

Lane 1 : RT-4 cell lysate

Lane 2 : U-251 MG cell lysate

Lane 3 : Human plasma lysate

Lane 4 : Human liver tissue lysate

Lane 5 : Human tonsil tissue lysate

Developed using the ECL technique.

Western blot - Anti-CCDC65 antibody (ab122482)

Please note: All products are "FOR RESEARCH USE ONLY. NOT FOR USE IN DIAGNOSTIC PROCEDURES"

Our Abpromise to you: Quality guaranteed and expert technical support

- Replacement or refund for products not performing as stated on the datasheet
- Valid for 12 months from date of delivery
- Response to your inquiry within 24 hours
- We provide support in Chinese, English, French, German, Japanese and Spanish
- Extensive multi-media technical resources to help you
- We investigate all quality concerns to ensure our products perform to the highest standards

If the product does not perform as described on this datasheet, we will offer a refund or replacement. For full details of the Abpromise, please visit <https://www.abcam.com/abpromise> or contact our technical team.

Terms and conditions

- Guarantee only valid for products bought direct from Abcam or one of our authorized distributors