

Product datasheet

Anti-CCDC81 antibody ab126514

2 Images

Overview

Product name	Anti-CCDC81 antibody
Description	Rabbit polyclonal to CCDC81
Host species	Rabbit
Tested applications	Suitable for: WB, IHC-P
Species reactivity	Reacts with: Human
Immunogen	antigen sequence corresponding to amino acids 397-498 of Human CCDC81.
Positive control	Human kidney tissue; RT-4 and U-251 MG cell lysates; Human liver and tonsil lysates.
General notes	<p>The Life Science industry has been in the grips of a reproducibility crisis for a number of years. Abcam is leading the way in addressing this with our range of recombinant monoclonal antibodies and knockout edited cell lines for gold-standard validation. Please check that this product meets your needs before purchasing.</p> <p>If you have any questions, special requirements or concerns, please send us an inquiry and/or contact our Support team ahead of purchase. Recommended alternatives for this product can be found below, along with publications, customer reviews and Q&As</p>

Properties

Form	Liquid
Storage instructions	Shipped at 4°C. Upon delivery aliquot and store at -20°C. Avoid freeze / thaw cycles.
Storage buffer	pH: 7.20 Preservative: 0.02% Sodium azide Constituents: 40% Glycerol (glycerin, glycerine), 59% PBS
Purity	Immunogen affinity purified
Clonality	Polyclonal
Isotype	IgG

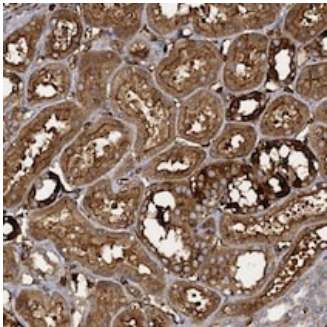
Applications

The Abpromise guarantee Our **Abpromise guarantee** covers the use of ab126514 in the following tested applications. The application notes include recommended starting dilutions; optimal dilutions/concentrations should be determined by the end user.

Application	Abreviews	Notes
WB		1/250 - 1/500. Predicted molecular weight: 76 kDa.
IHC-P		1/200 - 1/500. Perform heat mediated antigen retrieval with citrate buffer pH 6 before commencing with IHC staining protocol.

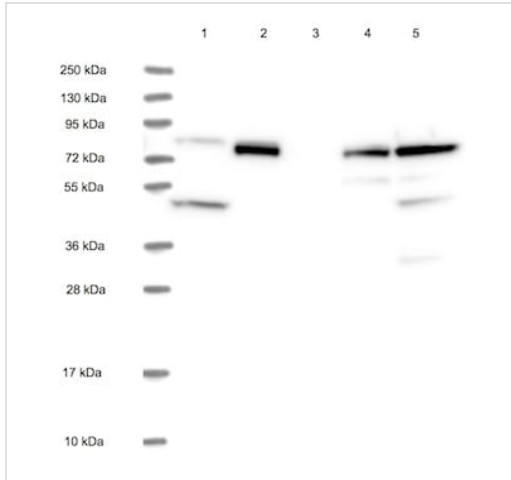
Target

Images



Immunohistochemistry (Formalin/PFA-fixed paraffin-embedded sections) - Anti-CCDC81 antibody (ab126514)

ab126514, at 1/200 dilution, staining CCDC81 in paraffin-embedded Human kidney tissue by Immunohistochemistry



Western blot - Anti-CCDC81 antibody (ab126514)

All lanes : Anti-CCDC81 antibody (ab126514) at 1/250 dilution

- Lane 1 :** RT-4 cell lysate
- Lane 2 :** U-251 MG cell lysate
- Lane 3 :** Human plasma lysate
- Lane 4 :** Human liver lysate
- Lane 5 :** Human tonsil lysate

Predicted band size: 76 kDa

Please note: All products are "FOR RESEARCH USE ONLY. NOT FOR USE IN DIAGNOSTIC PROCEDURES"

Our Abpromise to you: Quality guaranteed and expert technical support

- Replacement or refund for products not performing as stated on the datasheet
- Valid for 12 months from date of delivery
- Response to your inquiry within 24 hours
- We provide support in Chinese, English, French, German, Japanese and Spanish
- Extensive multi-media technical resources to help you
- We investigate all quality concerns to ensure our products perform to the highest standards

If the product does not perform as described on this datasheet, we will offer a refund or replacement. For full details of the Abpromise, please visit <https://www.abcam.com/abpromise> or contact our technical team.

Terms and conditions

- Guarantee only valid for products bought direct from Abcam or one of our authorized distributors