

# Anti-CCL23 antibody [EPR11363] - BSA and Azide free ab249653

Recombinant RabMAb

4 Images

### Overview

Product name	Anti-CCL23 antibody [EPR11363] - BSA and Azide free
Description	Rabbit monoclonal [EPR11363] to CCL23 - BSA and Azide free
Host species	Rabbit
Tested applications	<b>Suitable for:</b> IHC-P, WB <b>Unsuitable for:</b> ICC/IF or IP
Species reactivity	<b>Reacts with:</b> Human <b>Does not react with:</b> Mouse, Rat
Immunogen	Synthetic peptide. This information is proprietary to Abcam and/or its suppliers.
General notes	<p>ab249653 is the carrier-free version of <a href="#">ab171751</a>.</p> <p>Our <b>carrier-free</b> antibodies are typically supplied in a PBS-only formulation, purified and free of BSA, sodium azide and glycerol. The carrier-free buffer and high concentration allow for increased conjugation efficiency.</p> <p>This conjugation-ready format is designed for use with fluorochromes, metal isotopes, oligonucleotides, and enzymes, which makes them ideal for antibody labelling, functional and cell-based assays, flow-based assays (e.g. mass cytometry) and Multiplex Imaging applications.</p> <p>Use our <b>conjugation kits</b> for antibody conjugates that are ready-to-use in as little as 20 minutes with &lt;1 minute hands-on-time and 100% antibody recovery: available for fluorescent dyes, HRP, biotin and gold.</p> <p>This product is compatible with the Maxpar<sup>®</sup> Antibody Labeling Kit from Fluidigm, without the need for antibody preparation. Maxpar<sup>®</sup> is a trademark of Fluidigm Canada Inc.</p> <p>This product is a recombinant monoclonal antibody, which offers several advantages including:</p> <ul style="list-style-type: none"> <li>- High batch-to-batch consistency and reproducibility</li> <li>- Improved sensitivity and specificity</li> <li>- Long-term security of supply</li> <li>- Animal-free production</li> </ul> <p>For more information <a href="#">see here</a>.</p> <p>Our RabMAb<sup>®</sup> technology is a patented hybridoma-based technology for making rabbit monoclonal antibodies. For details on our patents, please refer to <a href="#">RabMAb<sup>®</sup> patents</a>.</p>

## Properties

<b>Form</b>	Liquid
<b>Storage instructions</b>	Shipped at 4°C. Store at +4°C. Do Not Freeze.
<b>Storage buffer</b>	pH: 7.2 Constituent: PBS
<b>Carrier free</b>	Yes
<b>Purity</b>	Protein A purified
<b>Clonality</b>	Monoclonal
<b>Clone number</b>	EPR11363
<b>Isotype</b>	IgG

## Applications

**The Abpromise guarantee** Our **Abpromise guarantee** covers the use of ab249653 in the following tested applications.

The application notes include recommended starting dilutions; optimal dilutions/concentrations should be determined by the end user.

Application	Abreviews	Notes
<b>IHC-P</b>		Use at an assay dependent concentration. Perform heat mediated antigen retrieval with citrate buffer pH 6 before commencing with IHC staining protocol.
<b>WB</b>		Use at an assay dependent concentration. Predicted molecular weight: 13 kDa.

**Application notes** Is unsuitable for ICC/IF or IP.

## Target

<b>Function</b>	Shows chemotactic activity for monocytes, resting T-lymphocytes, and neutrophils, but not for activated lymphocytes. Inhibits proliferation of myeloid progenitor cells in colony formation assays. This protein can bind heparin. Binds CCR1. CCL23(19-99), CCL23(22-99), CCL23(27-99), CCL23(30-99) are more potent chemoattractants than the small-inducible cytokine A23.
<b>Tissue specificity</b>	High levels in adult lung, liver, skeletal muscle and pancreas. Moderate levels in fetal liver, adult bone marrow and placenta. The short form is the major species and the longer form was detected only in very low abundance. CCL23(19-99), CCL23(22-99), CCL23(27-99), CCL23(30-99) are found in high levels in synovial fluids from rheumatoid patients.
<b>Sequence similarities</b>	Belongs to the intercrine beta (chemokine CC) family.
<b>Cellular localization</b>	Secreted.

## Images



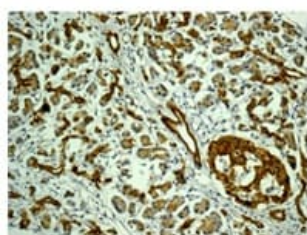
Western blot - Anti-CCL23 antibody [EPR11363] - BSA and Azide free (ab249653)

Anti-CCL23 antibody [EPR11363] ([ab171751](#)) at 1/1000 dilution + Human recombinant CCL23 at 0.005 µg

**Predicted band size:** 13 kDa

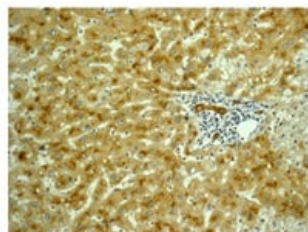
This data was developed using [ab171751](#), the same antibody clone in a different buffer formulation.

Note: Primary antibody diluted in 1% BSA.



Immunohistochemistry (Formalin/PFA-fixed paraffin-embedded sections) - Anti-CCL23 antibody [EPR11363] - BSA and Azide free (ab249653)

This data was developed using [ab171751](#), the same antibody clone in a different buffer formulation. Immunohistochemistry of paraffin-embedded Human pancreas tissue labeling CCL23 using [ab171751](#) at 1/50 dilution. Perform heat mediated antigen retrieval with citrate buffer pH 6 before commencing with IHC staining protocol.



Immunohistochemistry (Formalin/PFA-fixed paraffin-embedded sections) - Anti-CCL23 antibody [EPR11363] - BSA and Azide free (ab249653)

This data was developed using [ab171751](#), the same antibody clone in a different buffer formulation. Immunohistochemistry of paraffin-embedded Human liver tissue labeling CCL23 using [ab171751](#) at 1/50 dilution. Perform heat mediated antigen retrieval with citrate buffer pH 6 before commencing with IHC staining protocol.

### Why choose a recombinant antibody?



**Research with confidence**  
Consistent and reproducible results



**Long-term and scalable supply**  
Recombinant technology



**Success from the first experiment**  
Confirmed specificity



**Ethical standards compliant**  
Animal-free production

Anti-CCL23 antibody [EPR11363] - BSA and Azide free (ab249653)

**Please note:** All products are "FOR RESEARCH USE ONLY. NOT FOR USE IN DIAGNOSTIC PROCEDURES"

### Our Abpromise to you: Quality guaranteed and expert technical support

---

- Replacement or refund for products not performing as stated on the datasheet
- Valid for 12 months from date of delivery
- Response to your inquiry within 24 hours
- We provide support in Chinese, English, French, German, Japanese and Spanish
- Extensive multi-media technical resources to help you
- We investigate all quality concerns to ensure our products perform to the highest standards

If the product does not perform as described on this datasheet, we will offer a refund or replacement. For full details of the Abpromise, please visit <https://www.abcam.com/abpromise> or contact our technical team.

### Terms and conditions

---

- Guarantee only valid for products bought direct from Abcam or one of our authorized distributors