

Product datasheet

Anti-CCL28/MEC antibody [MM0153-9G34] ab89544

[1 Image](#)

Overview

Product name	Anti-CCL28/MEC antibody [MM0153-9G34]
Description	Mouse monoclonal [MM0153-9G34] to CCL28/MEC
Host species	Mouse
Tested applications	Suitable for: WB
Species reactivity	Reacts with: Human
Immunogen	Recombinant full length protein corresponding to Human CCL28/MEC.
Positive control	WB: Human placenta tissue lysate.
General notes	<p>The Life Science industry has been in the grips of a reproducibility crisis for a number of years. Abcam is leading the way in addressing this with our range of recombinant monoclonal antibodies and knockout edited cell lines for gold-standard validation. Please check that this product meets your needs before purchasing.</p> <p>If you have any questions, special requirements or concerns, please send us an inquiry and/or contact our Support team ahead of purchase. Recommended alternatives for this product can be found below, along with publications, customer reviews and Q&As</p>

Properties

Form	Liquid
Storage instructions	Shipped at 4°C. Upon delivery aliquot and store at -20°C or -80°C. Avoid repeated freeze / thaw cycles.
Storage buffer	Constituent: PBS
Purity	Protein G purified
Purification notes	The IgG fraction of culture supernatant was purified by Protein G affinity chromatography and filtered through a 0.2 µm filter.
Clonality	Monoclonal
Clone number	MM0153-9G34
Isotype	IgG1

Applications

The Abpromise guarantee

Our **Abpromise guarantee** covers the use of ab89544 in the following tested applications.

The application notes include recommended starting dilutions; optimal dilutions/concentrations should be determined by the end user.

Application	Abreviews	Notes
WB		1/500 - 1/1000. Predicted molecular weight: 14 kDa.

Target

Function

Chemotactic activity for resting CD4, CD8 T-cells and eosinophils. Binds to CCR3 and CCR10 and induces calcium mobilization in a dose-dependent manner.

Tissue specificity

Preferentially expressed by epithelial cells of diverse tissues including normal and pathological colon, salivary gland, mammary gland, trachea and rectum. Also found in prostate, spleen, thyroid, psoriasis skin and in lower levels in peripheral blood leukocytes, small intestine, Peyer patches, stomach and normal skin.

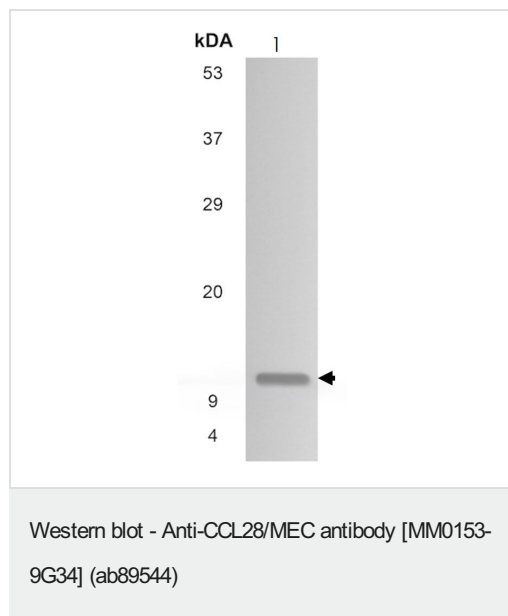
Sequence similarities

Belongs to the intercrine beta (chemokine CC) family.

Cellular localization

Secreted.

Images



Anti-CCL28/MEC antibody [MM0153-9G34] (ab89544) at 1/500 dilution + Human placenta tissue lysate

Predicted band size: 14 kDa

Observed band size: 12 kDa

Please note: All products are "FOR RESEARCH USE ONLY. NOT FOR USE IN DIAGNOSTIC PROCEDURES"

Our Abpromise to you: Quality guaranteed and expert technical support

- Replacement or refund for products not performing as stated on the datasheet
- Valid for 12 months from date of delivery
- Response to your inquiry within 24 hours

- We provide support in Chinese, English, French, German, Japanese and Spanish
- Extensive multi-media technical resources to help you
- We investigate all quality concerns to ensure our products perform to the highest standards

If the product does not perform as described on this datasheet, we will offer a refund or replacement. For full details of the Abpromise, please visit <https://www.abcam.com/abpromise> or contact our technical team.

Terms and conditions

- Guarantee only valid for products bought direct from Abcam or one of our authorized distributors