

## Product datasheet

# Anti-CCR3 antibody ab36827

★★★★☆ [2 Abreviews](#) [4 References](#) [3 Images](#)

### Overview

---

<b>Product name</b>	Anti-CCR3 antibody
<b>Description</b>	Rabbit polyclonal to CCR3
<b>Host species</b>	Rabbit
<b>Tested applications</b>	<b>Suitable for:</b> WB, IHC-P, ICC/IF
<b>Species reactivity</b>	<b>Reacts with:</b> Human
<b>Immunogen</b>	ab36827 was raised against a 14 amino acid peptide from near the carboxy terminus of CCR3 (Human).
<b>Positive control</b>	IHC-P:Human spleen tissue. ICC/IF: Human spleen cells WB: Human spleen cell lysate.
<b>General notes</b>	<p>The Life Science industry has been in the grips of a reproducibility crisis for a number of years. Abcam is leading the way in addressing this with our range of recombinant monoclonal antibodies and knockout edited cell lines for gold-standard validation. Please check that this product meets your needs before purchasing.</p> <p>If you have any questions, special requirements or concerns, please send us an inquiry and/or contact our Support team ahead of purchase. Recommended alternatives for this product can be found below, along with publications, customer reviews and Q&amp;As</p>

### Properties

---

<b>Form</b>	Liquid
<b>Storage instructions</b>	Shipped at 4°C. Store at +4°C short term (1-2 weeks). Store at +4°C.
<b>Storage buffer</b>	pH: 7.2 Preservative: 0.02% Sodium azide Constituent: PBS
<b>Purity</b>	Ion Exchange Chromatography
<b>Clonality</b>	Polyclonal
<b>Isotype</b>	IgG

### Applications

---

**The Abpromise guarantee** Our **Abpromise guarantee** covers the use of ab36827 in the following tested applications.

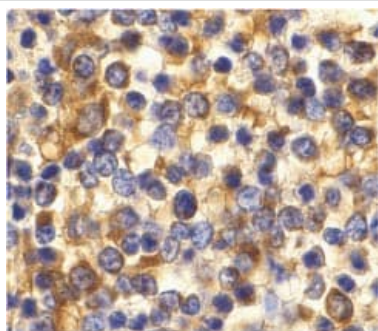
The application notes include recommended starting dilutions; optimal dilutions/concentrations should be determined by the end user.

Application	Abreviews	Notes
WB		Use a concentration of 1 - 2 µg/ml. Detects a band of approximately 55 kDa (predicted molecular weight: 43 kDa).
IHC-P	★★★★★ (2)	Use a concentration of 10 µg/ml.
ICC/IF		Use a concentration of 20 µg/ml.

## Target

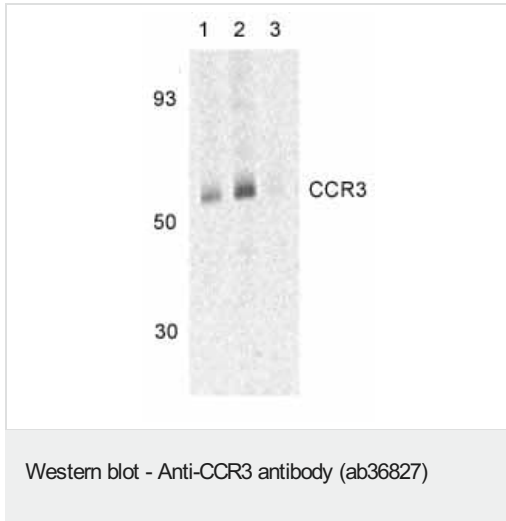
<b>Function</b>	Receptor for a C-C type chemokine. Binds to eotaxin, eotaxin-3, MCP-3, MCP-4, RANTES and MIP-1 delta. Subsequently transduces a signal by increasing the intracellular calcium ions level. Alternative coreceptor with CD4 for HIV-1 infection.
<b>Tissue specificity</b>	In eosinophils as well as trace amounts in neutrophils and monocytes.
<b>Sequence similarities</b>	Belongs to the G-protein coupled receptor 1 family.
<b>Cellular localization</b>	Cell membrane.

## Images



ab36827 at 10µg/ml staining CCR3 in human spleen tissue by IHC

Immunohistochemistry (Formalin/PFA-fixed paraffin-embedded sections) - Anti-CCR3 antibody (ab36827)



**Lane 1 :** Anti-CCR3 antibody (ab36827) at 1 µg/ml

**Lanes 2-3 :** Anti-CCR3 antibody (ab36827) at 2 µg/ml

**Lanes 1-2 :** Human spleen tissue lysates

**Lane 3 :** Human spleen tissue lysates with Blocking peptide

**Predicted band size:** 43 kDa

**Observed band size:** 55 kDa

Immunocytochemistry/ Immunofluorescence - Anti-CCR3 antibody (ab36827)

Immunofluorescence of CCR3 in Human Spleen cells using ab36827 at 20 µg/ml.

**Please note:** All products are "FOR RESEARCH USE ONLY. NOT FOR USE IN DIAGNOSTIC PROCEDURES"

### Our Abpromise to you: Quality guaranteed and expert technical support

- Replacement or refund for products not performing as stated on the datasheet
- Valid for 12 months from date of delivery
- Response to your inquiry within 24 hours
- We provide support in Chinese, English, French, German, Japanese and Spanish
- Extensive multi-media technical resources to help you
- We investigate all quality concerns to ensure our products perform to the highest standards

If the product does not perform as described on this datasheet, we will offer a refund or replacement. For full details of the Abpromise, please visit <https://www.abcam.com/abpromise> or contact our technical team.

### Terms and conditions

- Guarantee only valid for products bought direct from Abcam or one of our authorized distributors