

Anti-CCR5 antibody [T21/8] ab110103

[3 References](#) [1 Image](#)

Overview

Product name	Anti-CCR5 antibody [T21/8]
Description	Mouse monoclonal [T21/8] to CCR5
Host species	Mouse
Tested applications	Suitable for: ELISA, Flow Cyt Unsuitable for: IHC-P, IP or WB
Species reactivity	Reacts with: Human
Immunogen	The details of the immunogen for this antibody are not available.
Epitope	The antibody reacts with the amino terminus of the protein. The exact amino acids that comprise the epitope recognized by the antibody have not been determined.
Positive control	Human tonsil tissue. Normal Human peripheral blood cells.
General notes	<p>The Life Science industry has been in the grips of a reproducibility crisis for a number of years. Abcam is leading the way in addressing this with our range of recombinant monoclonal antibodies and knockout edited cell lines for gold-standard validation. Please check that this product meets your needs before purchasing.</p> <p>If you have any questions, special requirements or concerns, please send us an inquiry and/or contact our Support team ahead of purchase. Recommended alternatives for this product can be found below, along with publications, customer reviews and Q&As</p>

Properties

Form	Liquid
Storage instructions	Shipped at 4°C. Store at +4°C short term (1-2 weeks). Store at -20°C or -80°C. Avoid freeze / thaw cycle.
Storage buffer	pH: 7.20 Preservative: 0.09% Sodium azide Constituent: PBS
Purity	Protein G purified
Clonality	Monoclonal
Clone number	T21/8
Isotype	IgG1

Light chain type

kappa

Applications

The Abpromise guarantee

Our **Abpromise guarantee** covers the use of ab110103 in the following tested applications.

The application notes include recommended starting dilutions; optimal dilutions/concentrations should be determined by the end user.

Application	Abreviews	Notes
ELISA		Use at an assay dependent concentration.
Flow Cyt		Use 0.5µg for 10 ⁵⁻⁸ cells. in a final volume of 100 ul. ab170100 Mouse monoclonal IgG1 is suitable for use as an

Application notes

Is unsuitable for IHC-P, IP or WB.

Target

Function

Receptor for a number of inflammatory CC-chemokines including MIP-1-alpha, MIP-1-beta and RANTES and subsequently transduces a signal by increasing the intracellular calcium ion level. May play a role in the control of granulocytic lineage proliferation or differentiation. Acts as a coreceptor (CD4 being the primary receptor) for HIV-1 R5 isolates.

Tissue specificity

Highly expressed in spleen, thymus, in the myeloid cell line THP-1, in the promyeloblastic cell line KG-1A and on CD4+ and CD8+ T-cells. Medium levels in peripheral blood leukocytes and in small intestine. Low levels in ovary and lung.

Involvement in disease

Genetic variation in CCR5 is associated with susceptibility to diabetes mellitus insulin-dependent type 22 (IDDM22) [MIM:612522]. A multifactorial disorder of glucose homeostasis that is characterized by susceptibility to ketoacidosis in the absence of insulin therapy. Clinical features are polydipsia, polyphagia and polyuria which result from hyperglycemia-induced osmotic diuresis and secondary thirst. These derangements result in long-term complications that affect the eyes, kidneys, nerves, and blood vessels.

Sequence similarities

Belongs to the G-protein coupled receptor 1 family.

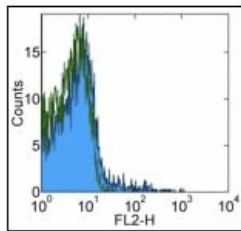
Post-translational modifications

Sulfated on at least 2 of the N-terminal tyrosines. Sulfation contributes to the efficiency of HIV-1 entry and is required for efficient binding of the chemokines, CCL3 and CCL4.
O-glycosylated, but not N-glycosylated. Ser-6 appears to be the major site. Also sialylated glycans present which contribute to chemokine binding. Thr-16 and Ser-17 may also be glycosylated and, if so, with small moieties such as a T-antigen.
Palmitoylation in the C-terminal is important for cell surface expression, and to a lesser extent, for HIV entry.
Phosphorylation on serine residues in the C-terminal is stimulated by binding CC chemokines especially by APO-RANTES.

Cellular localization

Cell membrane.

Images



Flow Cytometry - Anti-CCR5 antibody [T21/8]
(ab110103)

Staining of normal Human peripheral blood cells with 0.25µg of purified mouse IgG1, K isotype control (open histogram) or 0.25 µg of ab110103 (colored histogram), followed by biotin Anti-mMouse IgG and SAV-PE.

Cells in the lymphocyte gate were used for analysis.

Please note: All products are "FOR RESEARCH USE ONLY. NOT FOR USE IN DIAGNOSTIC PROCEDURES"

Our Abpromise to you: Quality guaranteed and expert technical support

- Replacement or refund for products not performing as stated on the datasheet
- Valid for 12 months from date of delivery
- Response to your inquiry within 24 hours
- We provide support in Chinese, English, French, German, Japanese and Spanish
- Extensive multi-media technical resources to help you
- We investigate all quality concerns to ensure our products perform to the highest standards

If the product does not perform as described on this datasheet, we will offer a refund or replacement. For full details of the Abpromise, please visit <https://www.abcam.com/abpromise> or contact our technical team.

Terms and conditions

- Guarantee only valid for products bought direct from Abcam or one of our authorized distributors