

Product datasheet

Anti-CCR6 antibody [EPR22259] ab227036

Recombinant **RabMAb**

[7 References](#) [7 Images](#)

Overview

Product name	Anti-CCR6 antibody [EPR22259]
Description	Rabbit monoclonal [EPR22259] to CCR6
Host species	Rabbit
Tested applications	Suitable for: WB, IHC-P, IP, Indirect ELISA Unsuitable for: Flow Cyt or ICC/IF
Species reactivity	Reacts with: Human
Immunogen	Synthetic peptide. This information is proprietary to Abcam and/or its suppliers.
Positive control	WB: HL-60, Hut-78 and HUVEC whole cell lysates; Human tonsil and thymus tissue lysate. IHC-P: Human Hodgkin's lymphoma and tonsil tissue. IP: HL-60 whole cell lysate. Indirect ELISA: human CCR6
General notes	Our RabMAb [®] technology is a patented hybridoma-based technology for making rabbit monoclonal antibodies. For details on our patents, please refer to RabMAb[®] patents .

Properties

Form	Liquid
Storage instructions	Shipped at 4°C. Store at +4°C short term (1-2 weeks). Upon delivery aliquot. Store at -20°C long term. Avoid freeze / thaw cycle.
Storage buffer	pH: 7.2 Preservative: 0.01% Sodium azide Constituents: PBS, 40% Glycerol (glycerin, glycerine), 0.05% BSA
Purity	Protein A purified
Clonality	Monoclonal
Clone number	EPR22259
Isotype	IgG

Applications

The **Abpromise guarantee** Our [Abpromise guarantee](#) covers the use of ab227036 in the following tested applications.

The application notes include recommended starting dilutions; optimal dilutions/concentrations should be determined by the end user.

Application	Abreviews	Notes
WB		1/1000. Predicted molecular weight: 42 kDa.
IHC-P		1/1000. Perform heat mediated antigen retrieval with Tris/EDTA buffer pH 9.0 before commencing with IHC staining protocol.
IP		1/30.
Indirect ELISA		Use at an assay dependent concentration.

Application notes Is unsuitable for Flow Cyt or ICC/IF.

Target

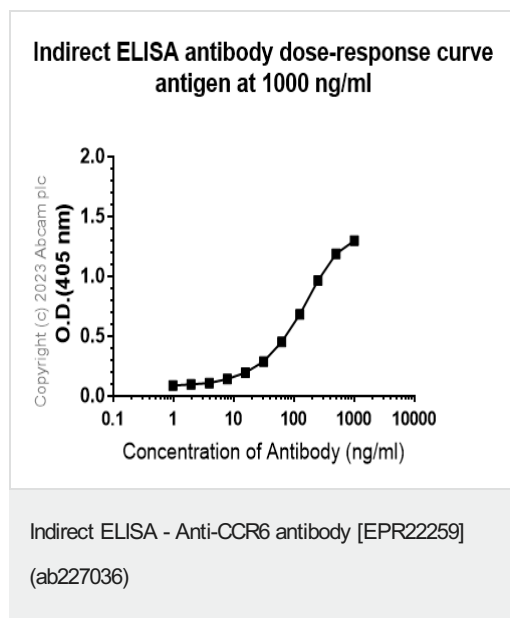
Function	Receptor for a C-C type chemokine. Binds to MIP-3-alpha/LARC and subsequently transduces a signal by increasing the intracellular calcium ions level.
-----------------	---

Tissue specificity	Spleen, lymph nodes, appendix, and fetal liver. Expressed in lymphocytes, T-cells and B-cells but not in natural killer cells, monocytes or granulocytes.
---------------------------	---

Sequence similarities Belongs to the G-protein coupled receptor 1 family.

Cellular localization	Cell membrane.
------------------------------	----------------

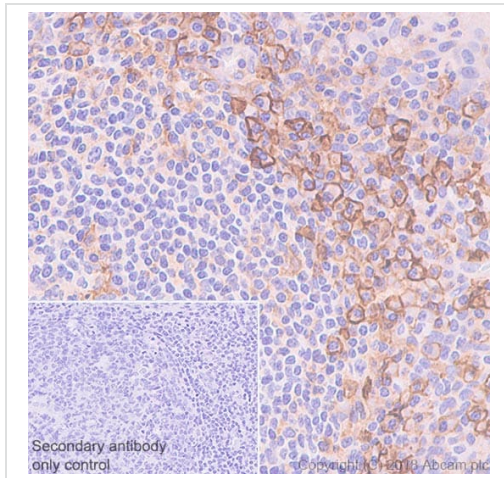
Images



Indirect ELISA showing primary antibody ab227036 binding to Human CCR6. Antigen concentration is 1000 ng/ml.

Binding of ab227036 was assessed in a serial dilution range 1000-0 ng/ml.

Binding was detected using the secondary antibody, Alkaline Phosphatase-conjugated AffiniPure Goat Anti-Rabbit IgG(H+L) at 1/2500 dilution.



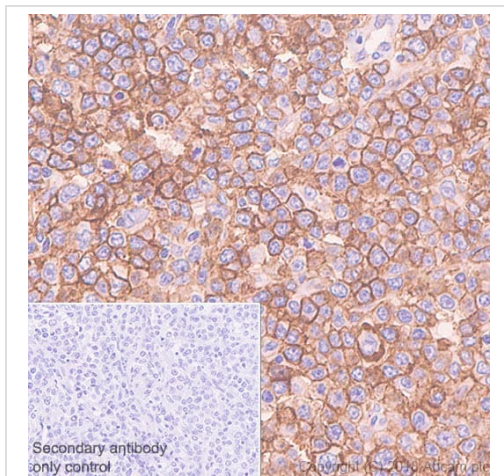
Immunohistochemistry (Formalin/PFA-fixed paraffin-embedded sections) - Anti-CCR6 antibody [EPR22259] (ab227036)

Immunohistochemical analysis of paraffin-embedded human tonsil tissue labeling CCR6 with ab227036 at 1/1000 dilution, followed by the ready to use Rabbit specific IHC polymer detection kit HRP/DAB (**ab209101**). Membranous staining on human tonsil (PMID: 12514792) is observed. Counterstained with hematoxylin.

Secondary antibody only control: Used PBS instead of primary antibody, secondary antibody is the ready to use Rabbit specific IHC polymer detection kit HRP/DAB (**ab209101**).

The section was incubated with ab227036 for 30 mins at 37°C. The immunostaining was performed on a Leica Biosystems BOND® RX instrument.

Heat mediated antigen retrieval with Tris-EDTA buffer (pH 9.0, epitope retrieval solution 2) for 20 mins.



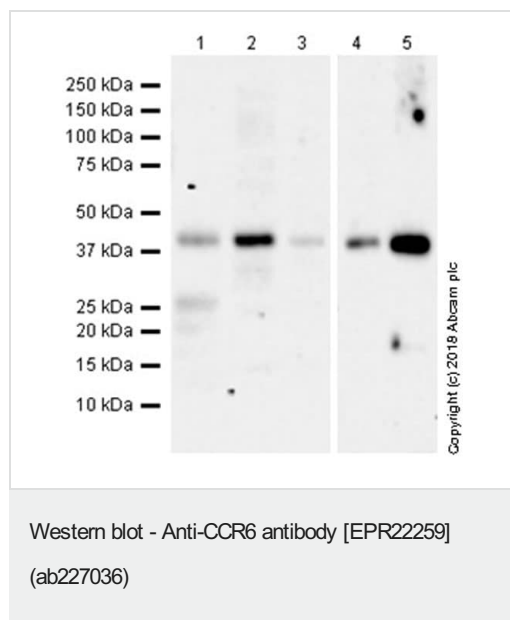
Immunohistochemistry (Formalin/PFA-fixed paraffin-embedded sections) - Anti-CCR6 antibody [EPR22259] (ab227036)

Immunohistochemical analysis of paraffin-embedded human Hodgkin's lymphoma tissue labeling CCR6 with ab227036 at 1/1000 dilution, followed by the ready to use Rabbit specific IHC polymer detection kit HRP/DAB (**ab209101**). Membranous staining on human Hodgkin's lymphoma (PMID: 12514792) is observed. Counterstained with hematoxylin.

Secondary antibody only control: Used PBS instead of primary antibody, secondary antibody is the ready to use Rabbit specific IHC polymer detection kit HRP/DAB (**ab209101**).

Heat mediated antigen retrieval with Tris-EDTA buffer (pH 9.0, epitope retrieval solution 2) for 20 mins.

The section was incubated with ab227036 for 30 mins at 37°C. The immunostaining was performed on a Leica Biosystems BOND® RX instrument.



All lanes : Anti-CCR6 antibody [EPR22259] (ab227036) at 1/1000 dilution

Lane 1 : HL-60 (human acute promyelocytic leukemia promyeloblast) whole cell lysate

Lane 2 : HuT-78 (human sezary syndrome cutaneous t lymphocyte) whole cell lysate

Lane 3 : HUVEC (human umbilical vein endothelial cell) whole cell lysate

Lane 4 : Human tonsil tissue lysate

Lane 5 : Human thymus tissue lysate

Lysates/proteins at 20 µg per lane.

Secondary

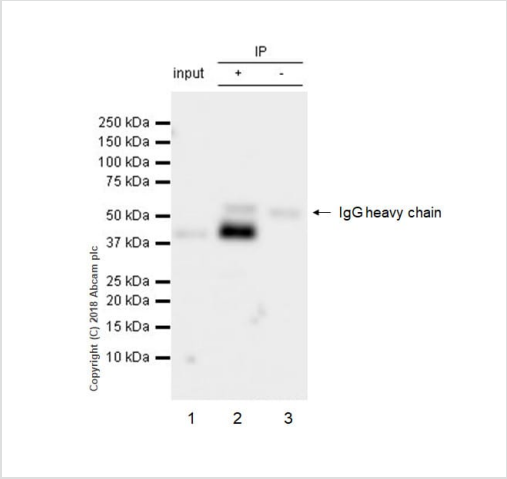
Lanes 1-3 : Goat Anti-Rabbit IgG H&L (HRP) ([ab97051](#)) at 1/100000 dilution

Lanes 4-5 : VeriBlot for IP Detection Reagent (HRP) ([ab131366](#)) at 1/100000 dilution

Predicted band size: 42 kDa

Exposure time: 3 minutes

Blocking/Diluting buffer and concentration: 5% NFDM/TBST



Immunoprecipitation - Anti-CCR6 antibody
[EPR22259] (ab227036)

CCR6 was immunoprecipitated from 0.35 mg HL-60 (Human acute promyelocytic leukemia promyeloblast) whole cell lysate with ab227036 at 1/30 dilution. Western blot was performed on the immunoprecipitate using ab227036 at 1/500 dilution. VeriBlot for IP Detection Reagent (HRP) ([ab131366](#)) was used for detection at 1/1000 dilution.

- Lane 1:** HL-60 whole cell lysate 10 µg (input).
Lane 2: ab227036 IP in HL-60 whole cell lysate.
Lane 3: Rabbit monoclonal IgG ([ab172730](#)) instead of ab227036 in HL-60 whole cell lysate.

Blocking and dilution buffer and concentration: 5% NFDM/TBST.
Exposure time: 1 second.

Tissue Microarray (TMA) data for ab227036					
Normal tissue samples			Malignant tissue samples		
Human cardiac muscle	✗ (stomach cells ✓)	Human placenta	✗ (stomach cells ✓)	Clear cell carcinoma of human kidney	✗ (stomach cells ✓)
Human cerebellum	✗ (stomach cells ✓)	Human skeletal muscle	✗	Human bladder cancer	✗ (stomach cells ✓)
Human colon	✗ (stomach cells ✓)	Human skin	✗	Human breast carcinoma	✗ (stomach cells ✓)
Human endometrium	✗	Human spleen	✗ (stomach cells ✓)	Human cervical carcinoma	✓
Human kidney	✗ (stomach cells ✓)	Human stomach	✗ (stomach cells ✓)	Human colon carcinoma	✓
Human liver	✗ (stomach cells ✓)	Human testis	✗	Human endometrial carcinoma	✗ (stomach cells ✓)
Human lung	✗	Human thyroid	✗	Human gastric adenocarcinoma	✗ (stomach cells ✓)
Human mammary gland	✗	Human tonsil	✓	Human glioma	✗ (stomach cells ✓)
Human pancreas	✗ (stomach cells ✓)				
				Human hepatocellular carcinoma	✗ (stomach cells ✓)
				Human Hodgkin's lymphoma	✓
				Human lung carcinoma	✗ (stomach cells ✓)
				Human ovarian carcinoma	✓
				Human pancreatic carcinoma	✗ (stomach cells ✓)
				Human prostatic hyperplasia	✗
				Human thyroid carcinoma	✗ (stomach cells ✓)

Immunohistochemistry (Formalin/PFA-fixed paraffin-embedded sections) - Anti-CCR6 antibody
[EPR22259] (ab227036)

Tissue Microarrays stained for "Anti-CCR6 antibody [EPR22259]" using "ab227036" in immunohistochemical analysis. This table provides a detailed overview of positive (tick mark) and negative (cross mark) staining per sample type tested. The sections were pre-treated using Heat mediated antigen retrieval using Bond™ Epitope Retrieval Solution 2 (pH 9.0) for 20 minutes. The sections were incubated with ab227036 for 30 mins at 37? followed by a ready to use Rabbit specific IHC polymer detection kit HRP/DAB ([ab209101](#)). The immunostaining was performed on a Leica Biosystems BOND® RX instrument.

Why choose a recombinant antibody?



Research with confidence
Consistent and reproducible results



Long-term and scalable supply
Recombinant technology



Success from the first experiment
Confirmed specificity



Ethical standards compliant
Animal-free production

Anti-CCR6 antibody [EPR22259] (ab227036)

Please note: All products are "FOR RESEARCH USE ONLY. NOT FOR USE IN DIAGNOSTIC PROCEDURES"

Our Abpromise to you: Quality guaranteed and expert technical support

- Replacement or refund for products not performing as stated on the datasheet
- Valid for 12 months from date of delivery
- Response to your inquiry within 24 hours
- We provide support in Chinese, English, French, German, Japanese and Spanish
- Extensive multi-media technical resources to help you
- We investigate all quality concerns to ensure our products perform to the highest standards

If the product does not perform as described on this datasheet, we will offer a refund or replacement. For full details of the Abpromise, please visit <https://www.abcam.com/abpromise> or contact our technical team.

Terms and conditions

- Guarantee only valid for products bought direct from Abcam or one of our authorized distributors