

Product datasheet

Anti-CCR6 antibody [EPR24085-145] ab303672

Recombinant RabMAb

4 Images

Overview

Product name	Anti-CCR6 antibody [EPR24085-145]
Description	Rabbit monoclonal [EPR24085-145] to CCR6
Host species	Rabbit
Tested applications	Suitable for: Flow Cyt, ICC/IF Unsuitable for: IHC-Fr, IHC-P, IP or WB
Species reactivity	Reacts with: Human Does not react with: Mouse, Rat
Immunogen	Recombinant fragment. This information is proprietary to Abcam and/or its suppliers.
Positive control	ICC/IF: Human PBMC cell line. Flow Cyt: Human PBMC cell line.
General notes	This product is a recombinant monoclonal antibody, which offers several advantages including: <ul style="list-style-type: none"> - High batch-to-batch consistency and reproducibility - Improved sensitivity and specificity - Long-term security of supply - Animal-free production For more information see here . Our RabMAb [®] technology is a patented hybridoma-based technology for making rabbit monoclonal antibodies. For details on our patents, please refer to RabMAb[®] patents .

Properties

Form	Liquid
Storage instructions	Shipped at 4°C. Store at +4°C short term (1-2 weeks). Upon delivery aliquot. Store at -20°C long term. Avoid freeze / thaw cycle.
Storage buffer	pH: 7.20 Preservative: 0.01% Sodium azide Constituents: 59% PBS, 40% Glycerol (glycerin, glycerine), 0.05% BSA
Purity	Protein A purified
Clonality	Monoclonal
Clone number	EPR24085-145

Isotype

IgG

Applications

The Abpromise guarantee

Our **Abpromise guarantee** covers the use of ab303672 in the following tested applications.

The application notes include recommended starting dilutions; optimal dilutions/concentrations should be determined by the end user.

Application	Abreviews	Notes
Flow Cyt		1/500.
ICC/IF		1/50.

Application notes

Is unsuitable for IHC-Fr,IHC-P,IP or WB.

Target

Function

Receptor for a C-C type chemokine. Binds to MIP-3-alpha/LARC and subsequently transduces a signal by increasing the intracellular calcium ions level.

Tissue specificity

Spleen, lymph nodes, appendix, and fetal liver. Expressed in lymphocytes, T-cells and B-cells but not in natural killer cells, monocytes or granulocytes.

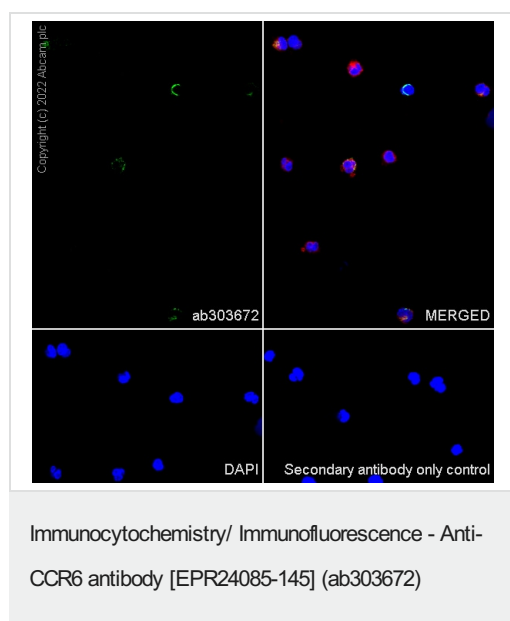
Sequence similarities

Belongs to the G-protein coupled receptor 1 family.

Cellular localization

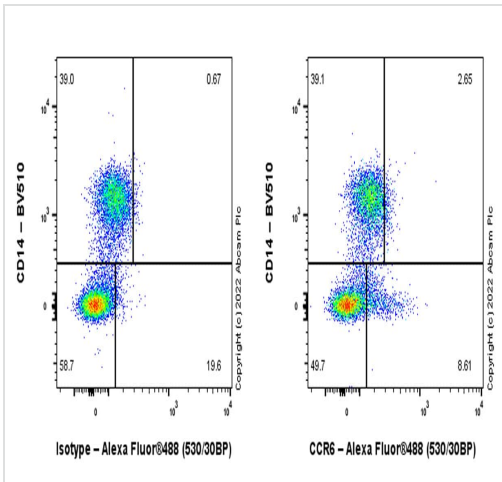
Cell membrane.

Images



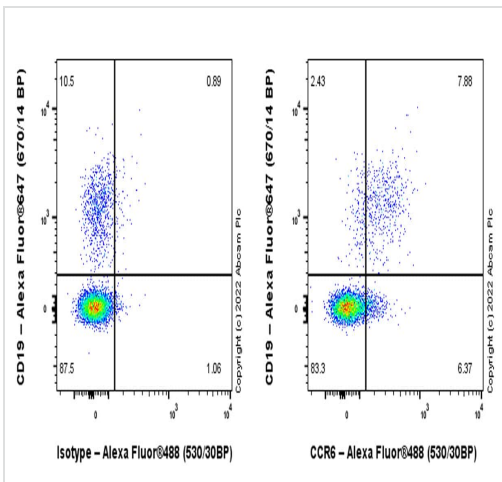
Immunofluorescent analysis of 4% paraformaldehyde-fixed, 0.1% TritonX-100 permeabilized Human PBMC (human primary peripheral blood mononuclear cell) cells labeling CCR6 with ab303672 at 1/50 dilution (10.68 µg/mL), followed by **ab150081** Goat Anti-Rabbit IgG H&L (Alexa Fluor® 488) preadsorbed antibody at 1/1000 dilution (2 µg/mL) (Green). Confocal image showing cytoplasmic staining in subsets of human PBMCs. Image was taken with a confocal microscope (Leica-Microsystems, TCS SP8). **ab195889** Anti-alpha Tubulin mouse monoclonal antibody - Microtubule Marker (Alexa Fluor® 594) was used to counterstain tubulin at 1/200 dilution (2.5 µg/mL) (Red). The Nuclear counterstain was DAPI (Blue).

Secondary antibody only control: Secondary antibody is **ab150081** Goat Anti-Rabbit IgG H&L (Alexa Fluor® 488) preadsorbed at 1/1000 dilution (2 µg/mL).



Flow Cytometry - Anti-CCR6 antibody [EPR24085-145] (ab303672)

Flow cytometric analysis of human peripheral blood mononuclear cell (PBMC) cells labeling CCR6 with ab303672 at 1/500 dilution (0.1 µg) (Right) compared with a Rabbit monoclonal IgG (**ab172730**) (Left) isotype control. Goat Anti-Rabbit IgG (Alexa Fluor® 488, **ab150081**) at 1/2000 dilution was used as the secondary antibody. Cells were stained with rabbit IgG or ab303672. Then stained with anti-CD14 conjugated to BV510. Gated on viable cells.



Flow Cytometry - Anti-CCR6 antibody [EPR24085-145] (ab303672)

Flow cytometric analysis of human peripheral blood mononuclear cell (PBMC) cells labeling CCR6 with ab303672 at 1/500 dilution (0.1 µg) (Right) compared with a Rabbit monoclonal IgG (**ab172730**) (Left). Goat Anti-Rabbit IgG (Alexa Fluor® 488, **ab150081**) at 1/2000 dilution was used as the secondary antibody. Cells were stained with rabbit IgG or ab303672. Then stained with anti-CD19 conjugated to Alexa Fluor® 647. Gated on viable lymphocytes.

Why choose a recombinant antibody?

- Research with confidence**
Consistent and reproducible results
- Long-term and scalable supply**
Recombinant technology
- Success from the first experiment**
Confirmed specificity
- Ethical standards compliant**
Animal-free production

Anti-CCR6 antibody [EPR24085-145] (ab303672)

Please note: All products are "FOR RESEARCH USE ONLY. NOT FOR USE IN DIAGNOSTIC PROCEDURES"

Our Abpromise to you: Quality guaranteed and expert technical support

- Replacement or refund for products not performing as stated on the datasheet
- Valid for 12 months from date of delivery
- Response to your inquiry within 24 hours

- We provide support in Chinese, English, French, German, Japanese and Spanish
- Extensive multi-media technical resources to help you
- We investigate all quality concerns to ensure our products perform to the highest standards

If the product does not perform as described on this datasheet, we will offer a refund or replacement. For full details of the Abpromise, please visit <https://www.abcam.com/abpromise> or contact our technical team.

Terms and conditions

- Guarantee only valid for products bought direct from Abcam or one of our authorized distributors