

Anti-CCR6 antibody - N-terminal ab137369

[2 References](#) [2 Images](#)

Overview

Product name	Anti-CCR6 antibody - N-terminal
Description	Rabbit polyclonal to CCR6 - N-terminal
Host species	Rabbit
Tested applications	Suitable for: WB, IHC-P
Species reactivity	Reacts with: Human
Immunogen	Synthetic peptide, corresponding to a region within N-terminal amino acids 1-76 of Human CCR6 (Uniprot ID P51684).
Positive control	293T, A431, H1299, HeLaS3 cell lines; HepG2, MOLT4, Raji whole cell lysates; Human DU-145 xenograft tissue.
General notes	<p>The Life Science industry has been in the grips of a reproducibility crisis for a number of years. Abcam is leading the way in addressing this with our range of recombinant monoclonal antibodies and knockout edited cell lines for gold-standard validation. Please check that this product meets your needs before purchasing.</p> <p>If you have any questions, special requirements or concerns, please send us an inquiry and/or contact our Support team ahead of purchase. Recommended alternatives for this product can be found below, along with publications, customer reviews and Q&As</p>

Properties

Form	Liquid
Storage instructions	Shipped at 4°C. Upon delivery aliquot. Store at -20°C or -80°C. Avoid freeze / thaw cycle.
Storage buffer	<p>pH: 7.00</p> <p>Preservative: 0.01% Thimerosal (merthiolate)</p> <p>Constituents: 1.21% Tris, 0.75% Glycine, 10% Glycerol (glycerin, glycerine)</p>
Purity	Immunogen affinity purified
Clonality	Polyclonal
Isotype	IgG

Applications

The Abpromise guarantee

Our **Abpromise guarantee** covers the use of ab137369 in the following tested applications.

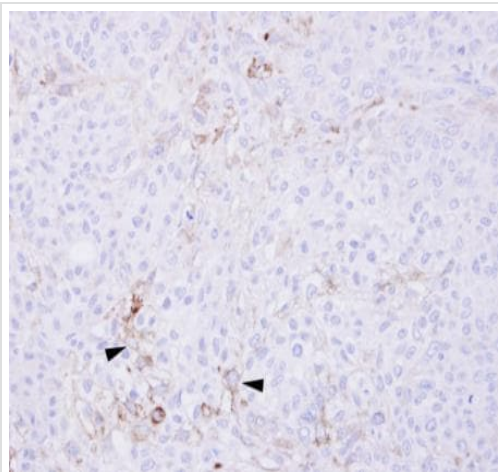
The application notes include recommended starting dilutions; optimal dilutions/concentrations should be determined by the end user.

Application	Abreviews	Notes
WB		1/500 - 1/3000. Predicted molecular weight: 43 kDa.
IHC-P		1/100 - 1/1000. Perform heat mediated antigen retrieval with citrate buffer pH 6 before commencing with IHC staining protocol. Antigen retrieval using heat mediated Tris-EDTA buffer (pH8.0) is also possible.

Target

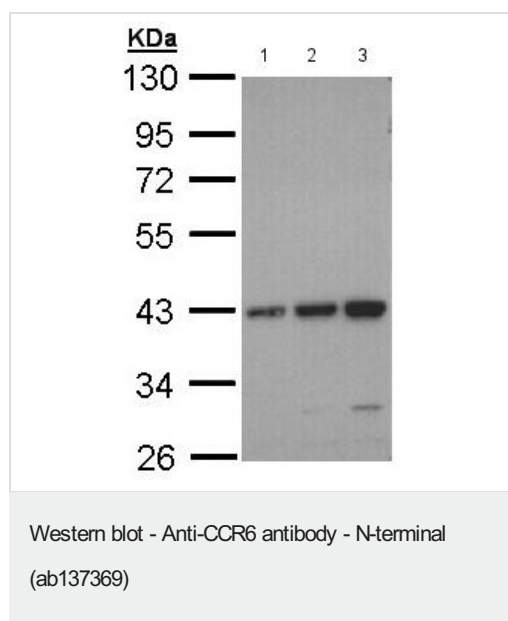
Function	Receptor for a C-C type chemokine. Binds to MIP-3-alpha/LARC and subsequently transduces a signal by increasing the intracellular calcium ions level.
Tissue specificity	Spleen, lymph nodes, appendix, and fetal liver. Expressed in lymphocytes, T-cells and B-cells but not in natural killer cells, monocytes or granulocytes.
Sequence similarities	Belongs to the G-protein coupled receptor 1 family.
Cellular localization	Cell membrane.

Images



Immunohistochemical analysis of paraffin-embedded Human DU-145 xenograft tissue labeling CCR6, using ab137369 at a 1/100 dilution.

Immunohistochemistry (Formalin/PFA-fixed paraffin-embedded sections) - Anti-CCR6 antibody - N-terminal (ab137369)



All lanes : Anti-CCR6 antibody - N-terminal (ab137369) at 1/1000 dilution

Lane 1 : HepG2 whole cell lysate

Lane 2 : MOLT4 whole cell lysate

Lane 3 : Raji whole cell lysate

Lysates/proteins at 30 µg per lane.

Predicted band size: 43 kDa

12% SDS PAGE

Please note: All products are "FOR RESEARCH USE ONLY. NOT FOR USE IN DIAGNOSTIC PROCEDURES"

Our Abpromise to you: Quality guaranteed and expert technical support

- Replacement or refund for products not performing as stated on the datasheet
- Valid for 12 months from date of delivery
- Response to your inquiry within 24 hours
- We provide support in Chinese, English, French, German, Japanese and Spanish
- Extensive multi-media technical resources to help you
- We investigate all quality concerns to ensure our products perform to the highest standards

If the product does not perform as described on this datasheet, we will offer a refund or replacement. For full details of the Abpromise, please visit <https://www.abcam.com/abpromise> or contact our technical team.

Terms and conditions

- Guarantee only valid for products bought direct from Abcam or one of our authorized distributors