

### Anti-CCR7 antibody ab191575

[5 References](#) [3 Images](#)

#### Overview

<b>Product name</b>	Anti-CCR7 antibody
<b>Description</b>	Rabbit polyclonal to CCR7
<b>Host species</b>	Rabbit
<b>Specificity</b>	ab191575 is predicted to not cross-react with other CCR proteins.
<b>Tested applications</b>	<b>Suitable for:</b> IHC-P, WB
<b>Species reactivity</b>	<b>Reacts with:</b> Human
<b>Immunogen</b>	Synthetic peptide corresponding to Human CCR7 (internal sequence). (15 amino acid peptide; NP_001829). Database link: <a href="#">P32248</a>
<b>Positive control</b>	Human spleen tissue lysate; Human spleen tissue.
<b>General notes</b>	<p>The Life Science industry has been in the grips of a reproducibility crisis for a number of years. Abcam is leading the way in addressing this with our range of recombinant monoclonal antibodies and knockout edited cell lines for gold-standard validation. Please check that this product meets your needs before purchasing.</p> <p>If you have any questions, special requirements or concerns, please send us an inquiry and/or contact our Support team ahead of purchase. Recommended alternatives for this product can be found below, along with publications, customer reviews and Q&amp;As</p>

#### Properties

<b>Form</b>	Liquid
<b>Storage instructions</b>	Shipped at 4°C. Store at +4°C short term (1-2 weeks). Upon delivery aliquot. Store at -20°C long term. Avoid freeze / thaw cycle.
<b>Storage buffer</b>	pH: 7.2 Preservative: 0.02% Sodium azide Constituent: 99% PBS
<b>Purity</b>	Immunogen affinity purified
<b>Clonality</b>	Polyclonal
<b>Isotype</b>	IgG

## Applications

### The Abpromise guarantee

Our **Abpromise guarantee** covers the use of ab191575 in the following tested applications.

The application notes include recommended starting dilutions; optimal dilutions/concentrations should be determined by the end user.

Application	Abreviews	Notes
IHC-P		Use a concentration of 5 - 20 µg/ml.
WB		Use a concentration of 1 - 2 µg/ml. Predicted molecular weight: 43 kDa.

## Target

### Function

Receptor for the MIP-3-beta chemokine. Probable mediator of EBV effects on B-lymphocytes or of normal lymphocyte functions.

### Tissue specificity

Expressed in various lymphoid tissues and activated B- and T-lymphocytes, strongly up-regulated in B-cells infected with Epstein-Barr virus and T-cells infected with herpesvirus 6 or 7.

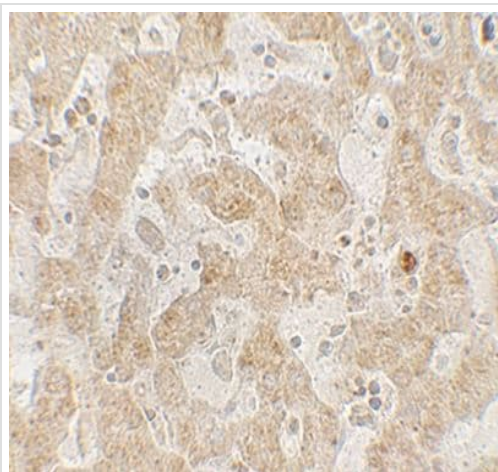
### Sequence similarities

Belongs to the G-protein coupled receptor 1 family.

### Cellular localization

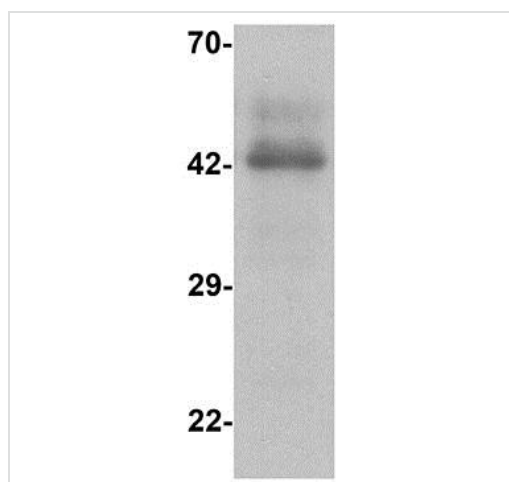
Cell membrane.

## Images



Immunohistochemical analysis of paraffin-embedded Human spleen tissue labeling CCR7 with ab191575 at 5 µg/ml.

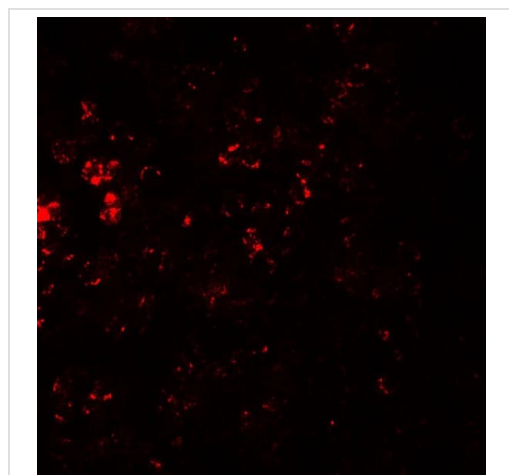
Immunohistochemistry (Formalin/PFA-fixed paraffin-embedded sections) - Anti-CCR7 antibody (ab191575)



Western blot - Anti-CCR7 antibody (ab191575)

Anti-CCR7 antibody (ab191575) at 1 µg/ml + Human spleen tissue lysate at 15 µg

**Predicted band size:** 43 kDa



Immunohistochemistry (Formalin/PFA-fixed paraffin-embedded sections) - Anti-CCR7 antibody (ab191575)

Immunohistochemical analysis of paraffin-embedded Human spleen tissue labeling CCR7 with ab191575 at 20 µg/ml.

**Please note:** All products are "FOR RESEARCH USE ONLY. NOT FOR USE IN DIAGNOSTIC PROCEDURES"

### Our Abpromise to you: Quality guaranteed and expert technical support

- Replacement or refund for products not performing as stated on the datasheet
- Valid for 12 months from date of delivery
- Response to your inquiry within 24 hours
- We provide support in Chinese, English, French, German, Japanese and Spanish

- Extensive multi-media technical resources to help you
- We investigate all quality concerns to ensure our products perform to the highest standards

If the product does not perform as described on this datasheet, we will offer a refund or replacement. For full details of the Abpromise, please visit <https://www.abcam.com/abpromise> or contact our technical team.

#### **Terms and conditions**

---

- Guarantee only valid for products bought direct from Abcam or one of our authorized distributors