


Product datasheet

Anti-CCR7 antibody [E75] ab32075

Recombinant RabMAb

[3 References](#) [4 Images](#)

Overview

Product name	Anti-CCR7 antibody [E75]
Description	Rabbit monoclonal [E75] to CCR7
Host species	Rabbit
Specificity	ab32075 recognises CCR7/CKR7. It does not cross react with other CKR family members
Tested applications	Suitable for: ELISA, WB Unsuitable for: Flow Cyt, ICC/IF, IHC or IP
Species reactivity	Reacts with: Mouse, Rat, Human Predicted to work with: Cow, Pig 
Immunogen	Synthetic peptide. This information is proprietary to Abcam and/or its suppliers.
Positive control	Daudi cell lysate
General notes	This product is a recombinant monoclonal antibody, which offers several advantages including: <ul style="list-style-type: none"> - High batch-to-batch consistency and reproducibility - Improved sensitivity and specificity - Long-term security of supply - Animal-free production For more information see here . Our RabMAb [®] technology is a patented hybridoma-based technology for making rabbit monoclonal antibodies. For details on our patents, please refer to RabMAb[®] patents .

Properties

Form	Liquid
Storage instructions	Shipped at 4°C. Upon delivery aliquot and store at -20°C. Avoid freeze / thaw cycles.
Storage buffer	pH: 7.20 Preservative: 0.01% Sodium azide Constituents: 49% PBS, 50% Glycerol (glycerin, glycerine), 0.05% BSA
Purity	Protein A purified
Clonality	Monoclonal
Clone number	E75

Isotype

IgG

Applications

The Abpromise guarantee

Our **Abpromise guarantee** covers the use of ab32075 in the following tested applications.

The application notes include recommended starting dilutions; optimal dilutions/concentrations should be determined by the end user.

Application	Abreviews	Notes
ELISA		Use at an assay dependent concentration.
WB		1/500. Detects a band of approximately 53 kDa (predicted molecular weight: 43 kDa).

Application notes

Is unsuitable for Flow Cyt, ICC/IF, IHC or IP.

Target

Function

Receptor for the MIP-3-beta chemokine. Probable mediator of EBV effects on B-lymphocytes or of normal lymphocyte functions.

Tissue specificity

Expressed in various lymphoid tissues and activated B- and T-lymphocytes, strongly up-regulated in B-cells infected with Epstein-Barr virus and T-cells infected with herpesvirus 6 or 7.

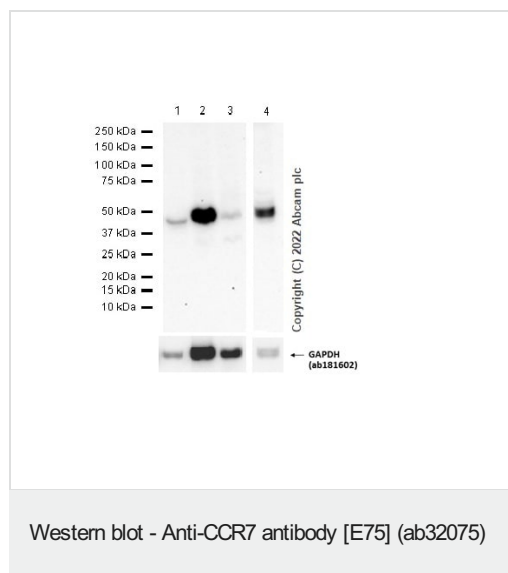
Sequence similarities

Belongs to the G-protein coupled receptor 1 family.

Cellular localization

Cell membrane.

Images



All lanes : Anti-CCR7 antibody [E75] (ab32075) at 1/1000 dilution

Lane 1 : K-562 (Human chronic myelogenous leukemia lymphoblast) cytoplasm fraction lysate

Lane 2 : K-562 (Human chronic myelogenous leukemia lymphoblast) membrane fraction lysate

Lane 3 : K-562 (Human chronic myelogenous leukemia lymphoblast) nuclear fraction lysate

Lane 4 : HDLM-2 (Human Hodgkin lymphoma) whole cell lysate

Lysates/proteins at 20 µg per lane.

Secondary

All lanes : Goat Anti-Rabbit IgG H&L (HRP) (**ab97051**) at 1/20000 dilution

Predicted band size: 43 kDa

Observed band size: 48 kDa

Exposure time: 20 seconds

Blocking and dilution buffer: 5% NFDM/TBST.

All lanes : Anti-CCR7 antibody [E75] (ab32075) at 1/1000 dilution

Lane 1 : K562 (Human chronic myelogenous leukemia lymphoblast) whole cell lysates

Lane 2 : Human lung lysate

Lane 3 : Human lymph node lysate

Lane 4 : Human spleen lysate

Lane 5 : Human plasma lysate

Lane 6 : Human brain lysate (low/negative expression)

Lane 7 : Human liver lysate (low/negative expression)

Lane 8 : Mouse lung lysate

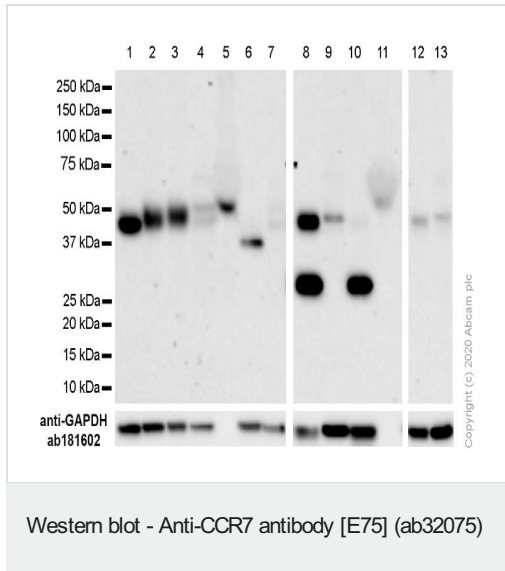
Lane 9 : Mouse lymph node lysate

Lane 10 : Mouse spleen lysate

Lane 11 : Mouse plasma lysate

Lane 12 : Rat lung lysate

Lane 13 : Rat lymph node



Lysates/proteins at 20 µg per lane.

Secondary

All lanes : Goat Anti-Rabbit IgG, (H+L), Peroxidase conjugated at 1/20000 dilution

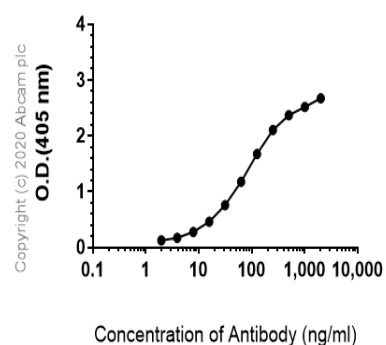
Predicted band size: 43 kDa

Observed band size: 48 kDa

The 50kda band in lanes 2-5 human tissue lysates should be IgG heavy chain.

Blocking and dilution buffer: 5% NFDM/TBST.

Indirect ELISA antibody dose-response curve antigen at 250 ng/ml



ELISA - Anti-CCR7 antibody [E75] (ab32075)

ELISA analysis of Human CCR7 recombinant protein at 250 ng/mL with ab32075. An Alkaline Phosphatase-conjugated AffiniPure Goat Anti-Rabbit IgG (H+L) at 1/2500 dilution was used as the secondary antibody.

Why choose a recombinant antibody?



Research with confidence
Consistent and reproducible results



Long-term and scalable supply
Recombinant technology



Success from the first experiment
Confirmed specificity



Ethical standards compliant
Animal-free production

Anti-CCR7 antibody [E75] (ab32075)

Please note: All products are "FOR RESEARCH USE ONLY. NOT FOR USE IN DIAGNOSTIC PROCEDURES"

Our Abpromise to you: Quality guaranteed and expert technical support

- Replacement or refund for products not performing as stated on the datasheet
- Valid for 12 months from date of delivery
- Response to your inquiry within 24 hours
- We provide support in Chinese, English, French, German, Japanese and Spanish
- Extensive multi-media technical resources to help you
- We investigate all quality concerns to ensure our products perform to the highest standards

If the product does not perform as described on this datasheet, we will offer a refund or replacement. For full details of the Abpromise, please visit <https://www.abcam.com/abpromise> or contact our technical team.

Terms and conditions

- Guarantee only valid for products bought direct from Abcam or one of our authorized distributors