

Anti-CCRL2 antibody ab88632

★★★★★ [5 Abreviews](#) [4 References](#) [4 Images](#)

Overview

Product name	Anti-CCRL2 antibody
Description	Mouse polyclonal to CCRL2
Host species	Mouse
Tested applications	Suitable for: WB, Flow Cyt
Species reactivity	Reacts with: Mouse, Human
Immunogen	Recombinant full length protein within Human CCRL2. The exact immunogen sequence used to generate this antibody is proprietary information. If additional detail on the immunogen is needed to determine the suitability of the antibody for your needs, please contact our Scientific Support team to discuss your requirements. Database link: NP_003956
Positive control	RAW 264.7 cell lyate, NIH/3T3 cell lysate, transfected 293 cells
General notes	<p>The Life Science industry has been in the grips of a reproducibility crisis for a number of years. Abcam is leading the way in addressing this with our range of recombinant monoclonal antibodies and knockout edited cell lines for gold-standard validation. Please check that this product meets your needs before purchasing.</p> <p>If you have any questions, special requirements or concerns, please send us an inquiry and/or contact our Support team ahead of purchase. Recommended alternatives for this product can be found below, along with publications, customer reviews and Q&As</p>

Properties

Form	Liquid
Storage instructions	Shipped at 4°C. Upon delivery aliquot and store at -20°C or -80°C. Avoid repeated freeze / thaw cycles.
Storage buffer	pH: 7.40 Constituent: 100% PBS
Purity	Protein A purified
Clonality	Polyclonal
Isotype	IgG

Applications

The Abpromise guarantee

Our **Abpromise guarantee** covers the use of ab88632 in the following tested applications.

The application notes include recommended starting dilutions; optimal dilutions/concentrations should be determined by the end user.

Application	Abreviews	Notes
WB		Use a concentration of 1 µg/ml. Predicted molecular weight: 40 kDa.
Flow Cyt	★★★★★ (5)	Use at an assay dependent concentration. ab37355 - Mouse polyclonal IgG, is suitable for use as an isotype control with this antibody.

Target

Function

Receptor for CCL19 and chemerin/RARRES2. Does not appear to be a signaling receptor, but may have a role in modulating chemokine-triggered immune responses by capturing and internalizing CCL19 or by presenting RARRES2 ligand to CMKLR1, a functional signaling receptors. Plays a critical role for the development of Th2 responses.

Tissue specificity

Expressed abundantly in immunal tissues such as spleen, fetal liver, lymph node and bone marrow. Strong expression also in lung and heart. Expressed in almost all hematopoietic cells including monocytes, macrophages, PMNs, T-cells (both CD4+ and CD8+), monocyte-derived iDCs, NK cells, and CD34+ progenitor cells. B cells expressed isoform 1 but not isoform 2. Up-regulated on synovial neutrophils of rheumatoid arthritis patients.

Sequence similarities

Belongs to the G-protein coupled receptor 1 family.

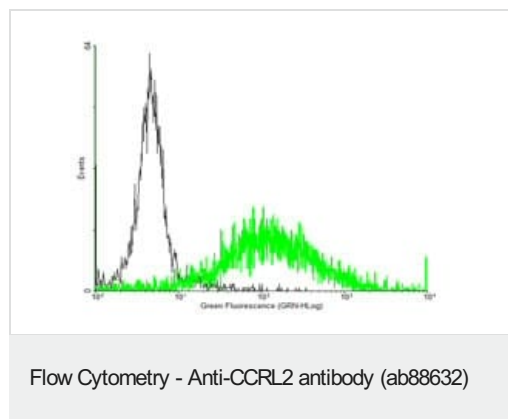
Domain

Lacks the conserved DRYLAIV motif in the second intracellular loop that is required for signaling of functional chemokine receptors.

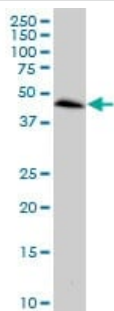
Cellular localization

Cell membrane.

Images



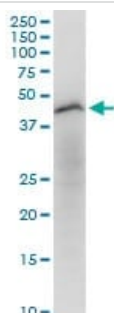
FACS analysis of negative control 293 cells (black) and CCRL2-expressing 293 cells (green) using ab88632.



Western blot - Anti-CCRL2 antibody (ab88632)

Anti-CCRL2 antibody (ab88632) at 1 µg/ml + Raw 264.7 cell lysate at 50 µg

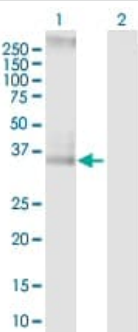
Predicted band size: 40 kDa



Western blot - Anti-CCRL2 antibody (ab88632)

Anti-CCRL2 antibody (ab88632) at 1 µg/ml + NIH/3T3 cell lysate at 50 µg

Predicted band size: 40 kDa



Western blot - Anti-CCRL2 antibody (ab88632)

All lanes : Anti-CCRL2 antibody (ab88632) at 1 µg/ml

Lane 1 : CCRL2-transfected 293T cell lysate

Lane 2 : Non-transfected 293T cell lysate

Lysates/proteins at 25 µg per lane.

Predicted band size: 40 kDa

Observed band size: 38 kDa

Please note: All products are "FOR RESEARCH USE ONLY. NOT FOR USE IN DIAGNOSTIC PROCEDURES"

Our Abpromise to you: Quality guaranteed and expert technical support

- Replacement or refund for products not performing as stated on the datasheet
- Valid for 12 months from date of delivery
- Response to your inquiry within 24 hours
- We provide support in Chinese, English, French, German, Japanese and Spanish
- Extensive multi-media technical resources to help you

- We investigate all quality concerns to ensure our products perform to the highest standards

If the product does not perform as described on this datasheet, we will offer a refund or replacement. For full details of the Abpromise, please visit <https://www.abcam.com/abpromise> or contact our technical team.

Terms and conditions

- Guarantee only valid for products bought direct from Abcam or one of our authorized distributors