

Product datasheet

Anti-CD10 antibody [MME/1870] ab238021

6 Images

Overview

| | |
|----------------------------|---|
| Product name | Anti-CD10 antibody [MME/1870] |
| Description | Mouse monoclonal [MME/1870] to CD10 |
| Host species | Mouse |
| Tested applications | Suitable for: Protein Array, IHC-P, WB |
| Species reactivity | Reacts with: Human |
| Immunogen | Recombinant fragment within Human CD10 aa 287-483. The exact sequence is proprietary. Database link: P08473 |
| Positive control | IHC-P: Human kidney, prostate, colon and renal cell carcinoma tissue. WB: Human kidney lysate. |
| General notes | <p>The Life Science industry has been in the grips of a reproducibility crisis for a number of years. Abcam is leading the way in addressing this with our range of recombinant monoclonal antibodies and knockout edited cell lines for gold-standard validation. Please check that this product meets your needs before purchasing.</p> <p>If you have any questions, special requirements or concerns, please send us an inquiry and/or contact our Support team ahead of purchase. Recommended alternatives for this product can be found below, along with publications, customer reviews and Q&As</p> |

Properties

| | |
|-----------------------------|---|
| Form | Liquid |
| Storage instructions | Shipped at 4°C. Store at +4°C short term (1-2 weeks). Upon delivery aliquot. Store at -20°C long term. Avoid freeze / thaw cycle. |
| Storage buffer | pH: 7.2 Preservative: 0.05% Sodium azide Constituents: PBS, 0.05% BSA |
| Purity | Protein A/G purified |
| Purification notes | Purified from Bioreactor Concentrate by Protein A/G. |
| Clonality | Monoclonal |
| Clone number | MME/1870 |
| Isotype | IgG2c |
| Light chain type | kappa |

Applications

The Abpromise guarantee

Our **Abpromise guarantee** covers the use of ab238021 in the following tested applications.

The application notes include recommended starting dilutions; optimal dilutions/concentrations should be determined by the end user.

| Application | Abreviews | Notes |
|---------------|-----------|--|
| Protein Array | | Use at an assay dependent concentration. |
| IHC-P | | Use a concentration of 1 - 2 µg/ml. Perform heat mediated antigen retrieval with Tris/EDTA buffer pH 9.0 before commencing with IHC staining protocol. Incubate with primary antibody for 30 minutes at RT. |
| WB | | Use a concentration of 1 - 2 µg/ml. Predicted molecular weight: 85 kDa. |

Target

Function

Thermolysin-like specificity, but is almost confined on acting on polypeptides of up to 30 amino acids. Biologically important in the destruction of opioid peptides such as Met- and Leu-enkephalins by cleavage of a Gly-Phe bond. Able to cleave angiotensin-1, angiotensin-2 and angiotensin 1-9. Involved in the degradation of atrial natriuretic factor (ANF). Displays UV-inducible elastase activity toward skin preelastic and elastic fibers.

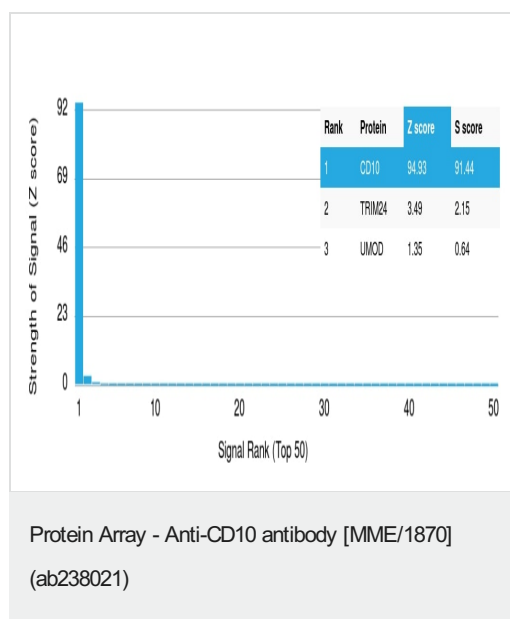
Sequence similarities

Belongs to the peptidase M13 family.

Cellular localization

Cell membrane.

Images

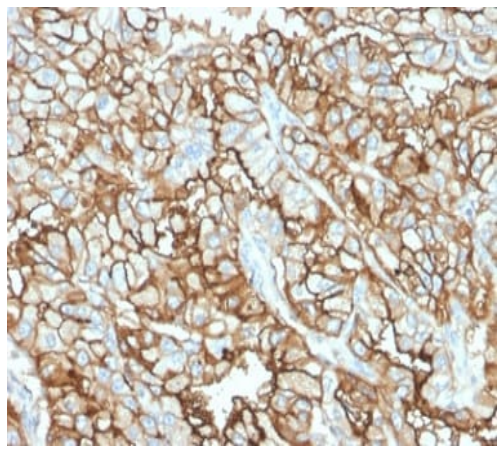


ab238021 was tested in protein array against over 19000 different full-length human proteins.

Z- and S- Score: The Z-score represents the strength of a signal that a monoclonal antibody (MAb) (in combination with a fluorescently-tagged anti-IgG secondary antibody) produces when binding to a particular protein on the HuProt™ array. Z-scores are described in units of standard deviations (SD's) above the mean value of all signals generated on that array. If targets on HuProt™ are arranged in descending order of the Z-score, the S-score is the difference (also in units of SD's) between the Z-score. S-score therefore represents the relative target specificity of a MAb to its intended target.

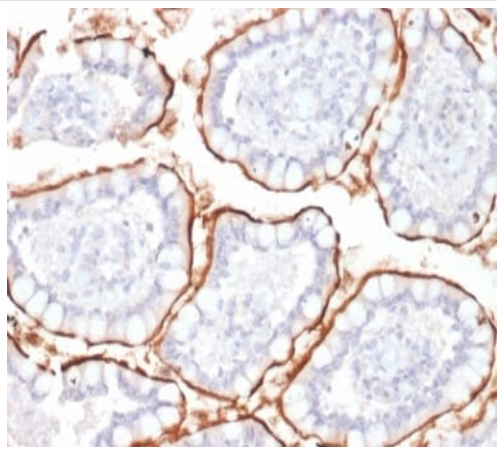
A MAb is specific to its intended target if the MAb has an S-score of at least 2.5. For example, if a MAb binds to protein X with a Z-score of 43 and to protein Y with a Z-score of 14, then the S-score

for the binding of that MAb to protein X is equal to 29.



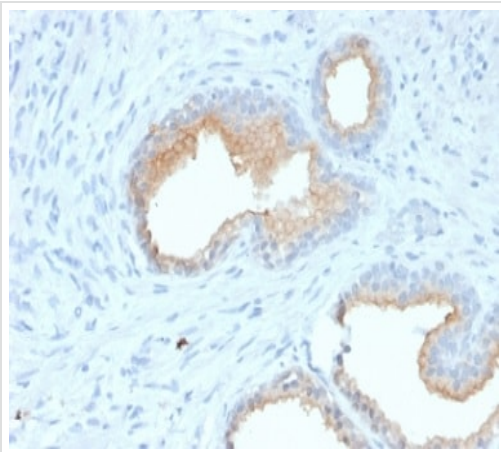
Immunohistochemistry (Formalin/PFA-fixed paraffin-embedded sections) - Anti-CD10 antibody
[MME/1870] (ab238021)

Formalin-fixed, paraffin-embedded human renal cell carcinoma tissue stained for CD10 using ab238021 at 2 µg/ml in immunohistochemical analysis.



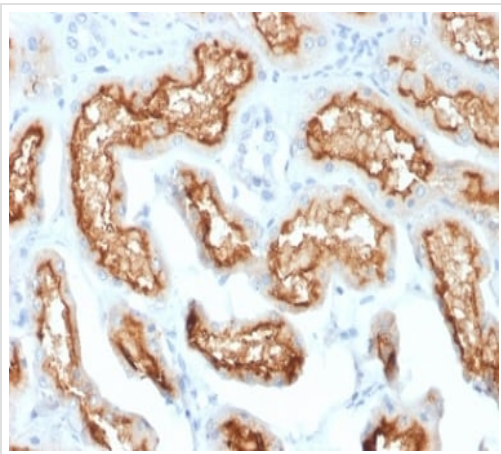
Immunohistochemistry (Formalin/PFA-fixed paraffin-embedded sections) - Anti-CD10 antibody
[MME/1870] (ab238021)

Formalin-fixed, paraffin-embedded human colon tissue stained for CD10 using ab238021 at 2 µg/ml in immunohistochemical analysis.



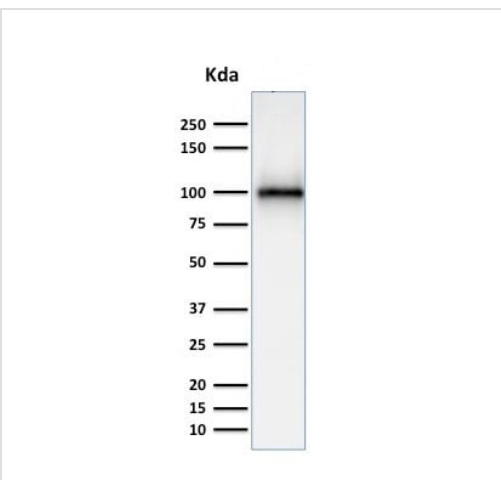
Formalin-fixed, paraffin-embedded human prostate tissue stained for CD10 using ab238021 at 2 $\mu\text{g}/\text{ml}$ in immunohistochemical analysis.

Immunohistochemistry (Formalin/PFA-fixed paraffin-embedded sections) - Anti-CD10 antibody [MME/1870] (ab238021)



Formalin-fixed, paraffin-embedded human kidney tissue stained for CD10 using ab238021 at 2 $\mu\text{g}/\text{ml}$ in immunohistochemical analysis.

Immunohistochemistry (Formalin/PFA-fixed paraffin-embedded sections) - Anti-CD10 antibody [MME/1870] (ab238021)



Anti-CD10 antibody [MME/1870] (ab238021) + Human kidney tissue lysate

Predicted band size: 85 kDa

Western blot - Anti-CD10 antibody [MME/1870] (ab238021)

Please note: All products are "FOR RESEARCH USE ONLY. NOT FOR USE IN DIAGNOSTIC PROCEDURES"

Our Abpromise to you: Quality guaranteed and expert technical support

- Replacement or refund for products not performing as stated on the datasheet
- Valid for 12 months from date of delivery
- Response to your inquiry within 24 hours
- We provide support in Chinese, English, French, German, Japanese and Spanish
- Extensive multi-media technical resources to help you
- We investigate all quality concerns to ensure our products perform to the highest standards

If the product does not perform as described on this datasheet, we will offer a refund or replacement. For full details of the Abpromise, please visit <https://www.abcam.com/abpromise> or contact our technical team.

Terms and conditions

- Guarantee only valid for products bought direct from Abcam or one of our authorized distributors