

Product datasheet

Anti-CD105 antibody ab21224

★★★★★ [1 Abreviews](#) [3 References](#) [1 Image](#)

Overview

Product name	Anti-CD105 antibody
Description	Rabbit polyclonal to CD105
Host species	Rabbit
Tested applications	Suitable for: Sandwich ELISA
Immunogen	Highly pure recombinant human soluble CD105 (aas 26-586) bearing C-terminal His 6 tag.
General notes	<p>The Life Science industry has been in the grips of a reproducibility crisis for a number of years. Abcam is leading the way in addressing this with our range of recombinant monoclonal antibodies and knockout edited cell lines for gold-standard validation. Please check that this product meets your needs before purchasing.</p> <p>If you have any questions, special requirements or concerns, please send us an inquiry and/or contact our Support team ahead of purchase. Recommended alternatives for this product can be found below, along with publications, customer reviews and Q&As</p>

Properties

Form	Lyophilized:Reconstitute the antibody (100 micrograms) in 200ul sterile water to >0.5 mg/ml.
Storage instructions	Shipped at 4°C. Store at +4°C short term (1-2 weeks). Store at -20°C or -80°C. Avoid freeze / thaw cycle.
Storage buffer	Constituent: PBS
Purity	Protein A purified
Clonality	Polyclonal
Isotype	IgG

Applications

The Abpromise guarantee Our **Abpromise guarantee** covers the use of ab21224 in the following tested applications. The application notes include recommended starting dilutions; optimal dilutions/concentrations should be determined by the end user.

Application	Abreviews	Notes
Sandwich ELISA		Use a concentration of 0.5 µg/ml. Can be paired for Sandwich ELISA with Mouse monoclonal [MEM-226] to CD105 (ab2529) . For sandwich ELISA, use this antibody as Detection at 0.5 µg/ml with Mouse monoclonal [MEM-226] to CD105 (ab2529) as Capture.

Target

Function

Major glycoprotein of vascular endothelium. May play a critical role in the binding of endothelial cells to integrins and/or other RGD receptors.

Tissue specificity

Endoglin is restricted to endothelial cells in all tissues except bone marrow.

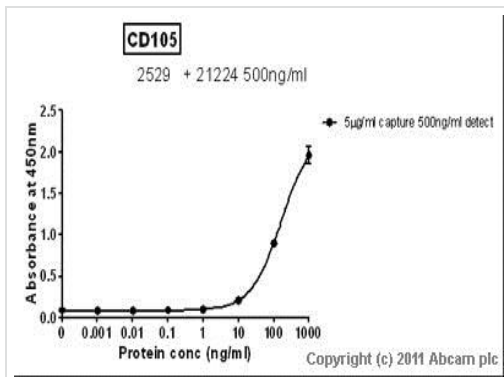
Involvement in disease

Defects in ENG are the cause of hereditary hemorrhagic telangiectasia type 1 (HHT1) [MIM:187300, 108010]; also known as Osler-Rendu-Weber syndrome 1 (ORW1). HHT1 is an autosomal dominant multisystemic vascular dysplasia, characterized by recurrent epistaxis, muco-cutaneous telangiectases, gastro-intestinal hemorrhage, and pulmonary (PAVM), cerebral (CAVM) and hepatic arteriovenous malformations; all secondary manifestations of the underlying vascular dysplasia. Although the first symptom of HHT1 in children is generally nose bleed, there is an important clinical heterogeneity.

Cellular localization

Membrane.

Images



Standard Curve for CD105 (Analyte: **CD105 protein (ab54338)**); dilution range 1pg/ml to 1ug/ml using Capture Antibody **Mouse monoclonal [MEM-226] to CD105 (ab2529)** at 5ug/ml and Detector Antibody **Rabbit polyclonal to CD105 (ab21224)** at 0.5ug/ml.

Sandwich ELISA - Anti-CD105 antibody (ab21224)

Please note: All products are "FOR RESEARCH USE ONLY. NOT FOR USE IN DIAGNOSTIC PROCEDURES"

Our Abpromise to you: Quality guaranteed and expert technical support

- Replacement or refund for products not performing as stated on the datasheet
- Valid for 12 months from date of delivery
- Response to your inquiry within 24 hours

- We provide support in Chinese, English, French, German, Japanese and Spanish
- Extensive multi-media technical resources to help you
- We investigate all quality concerns to ensure our products perform to the highest standards

If the product does not perform as described on this datasheet, we will offer a refund or replacement. For full details of the Abpromise, please visit <https://www.abcam.com/abpromise> or contact our technical team.

Terms and conditions

- Guarantee only valid for products bought direct from Abcam or one of our authorized distributors