

Product datasheet

Anti-CD11b antibody [M1/70] - BSA and Azide free ab237965

Recombinant

4 Images

Overview

Product name	Anti-CD11b antibody [M1/70] - BSA and Azide free
Description	Rat monoclonal [M1/70] to CD11b - BSA and Azide free
Host species	Rat
Tested applications	Suitable for: Flow Cyt, ICC/IF Unsuitable for: IHC-P
Species reactivity	Reacts with: Mouse, Human
Immunogen	Tissue, cells or virus. This information is proprietary to Abcam and/or its suppliers.
Positive control	Flow Cytometry: RAW 264.7 cells, Human peripheral blood mononuclear cell (PBMC), Mouse peripheral blood mononuclear cell (PBMC) IF/ICC: RAW 264.7 cells
General notes	<p>ab237965 is the carrier-free version of ab8878.</p> <p>This antibody clone is manufactured by Abcam. If you require a custom buffer formulation or conjugation for your experiments, please contact orders@abcam.com.</p> <p>Our carrier-free antibodies are typically supplied in a PBS-only formulation, purified and free of BSA, sodium azide and glycerol. The carrier-free buffer and high concentration allow for increased conjugation efficiency.</p> <p>This conjugation-ready format is designed for use with fluorochromes, metal isotopes, oligonucleotides, and enzymes, which makes them ideal for antibody labelling, functional and cell-based assays, flow-based assays (e.g. mass cytometry) and Multiplex Imaging applications.</p> <p>Use our conjugation kits for antibody conjugates that are ready-to-use in as little as 20 minutes with <1 minute hands-on-time and 100% antibody recovery: available for fluorescent dyes, HRP, biotin and gold.</p> <p>This product is compatible with the Maxpar[®] Antibody Labeling Kit from Fluidigm, without the need for antibody preparation. Maxpar[®] is a trademark of Fluidigm Canada Inc.</p> <p>This product is a recombinant monoclonal antibody, which offers several advantages including:</p> <ul style="list-style-type: none">- High batch-to-batch consistency and reproducibility- Improved sensitivity and specificity- Long-term security of supply- Animal-free production

For more information [see here](#).

Properties

Form	Liquid
Storage instructions	Shipped at 4°C. Store at +4°C short term (1-2 weeks). Store at +4°C. Do Not Freeze.
Storage buffer	pH: 7.20 Constituent: 100% PBS
Carrier free	Yes
Purity	Protein A purified
Clonality	Monoclonal
Clone number	M1/70
Myeloma	NS1
Isotype	IgG2b

Applications

The Abpromise guarantee Our [Abpromise guarantee](#) covers the use of ab237965 in the following tested applications. The application notes include recommended starting dilutions; optimal dilutions/concentrations should be determined by the end user.

Application	Abreviews	Notes
Flow Cyt		1/1000 - 1/10000. ab18536 - Rat monoclonal IgG2b, is suitable for use as an isotype control with this antibody.
ICC/IF		1/50.

Application notes Is unsuitable for IHC-P.

Target

Function Integrin alpha-M/beta-2 is implicated in various adhesive interactions of monocytes, macrophages and granulocytes as well as in mediating the uptake of complement-coated particles. It is identical with CR-3, the receptor for the iC3b fragment of the third complement component. It probably recognizes the R-G-D peptide in C3b. Integrin alpha-M/beta-2 is also a receptor for fibrinogen, factor X and ICAM1. It recognizes P1 and P2 peptides of fibrinogen gamma chain.

Tissue specificity Predominantly expressed in monocytes and granulocytes.

Involvement in disease Genetic variations in ITGAM has been associated with susceptibility to systemic lupus erythematosus type 6 (SLEB6) [MIM:609939]. Systemic lupus erythematosus (SLE) is a chronic, inflammatory and often febrile multisystemic disorder of connective tissue. It affects principally the skin, joints, kidneys and serosal membranes. It is thought to represent a failure of the regulatory mechanisms of the autoimmune system.

Sequence similarities Belongs to the integrin alpha chain family.

Contains 7 FG-GAP repeats.

Contains 1 VWFA domain.

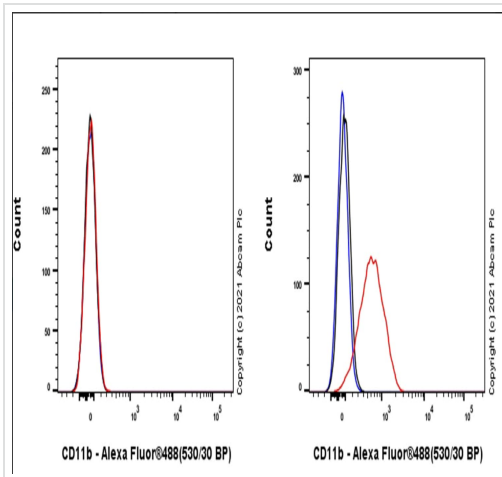
Domain

The integrin I-domain (insert) is a VWFA domain. Integrins with I-domains do not undergo protease cleavage.

Cellular localization

Membrane.

Images



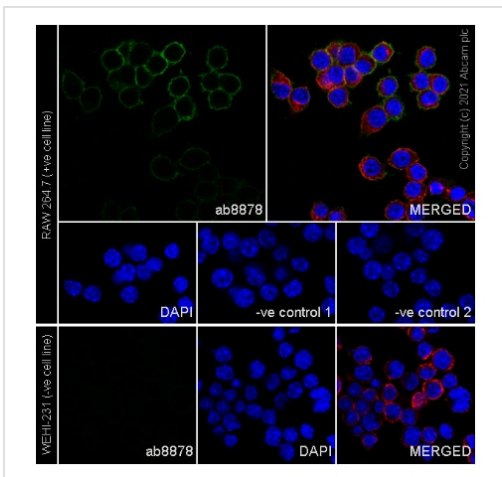
Flow Cytometry - Anti-CD11b antibody [M1/70] - BSA and Azide free (ab237965)

This data was developed using the same antibody clone in a different buffer formulation containing PBS and sodium azide ([ab8878](#)).

Flow Cytometry analysis of WEHI-231 (Mouse B cell lymphoma B lymphocyte, Left) / RAW 264.7 (Mouse Abelson murine leukemia virus-induced tumor macrophage, Right) cells stained for CD11b using AB8878 at a 1/1000 dilution (0.1 µg) (Red) compared to Rat monoclonal IgG - Isotype Control (Black) and cells without incubation with primary antibody and secondary antibody (Blue). Goat F(ab)2 Anti-Rat IgG Fc (Alexa Fluor® 488, [ab150161](#)) at 1/2000 dilution was used as the secondary antibody.

Negative control: WEHI-231.(PMID: 2457584)

Gated on viable cells.



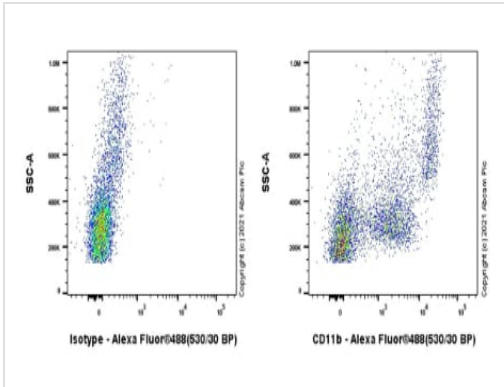
Immunocytochemistry/ Immunofluorescence - Anti-CD11b antibody [M1/70] - BSA and Azide free (ab237965)

This data was developed using the same antibody clone in a different buffer formulation containing PBS and sodium azide ([ab8878](#)).

Confocal image showing membranous staining in RAW 264.7 cells.

RAW 264.7, WEHI-231 and THP-1 cells were fixed in 4% PFA and permeabilized with 0.1% Triton X-100. Primary antibody, [ab8878](#) at 1:50 was incubated overnight at 4° C, followed by AlexaFluor® 488-conjugated Goat anti-Rat secondary antibody ([ab150157](#)) at 1/1000 dilution at RT for 45 min. [ab179513](#) Anti-beta Tubulin, used as a counterstain at 1/200 dilution, was co-incubated with [ab8878](#) overnight at 4° C, followed by Alexa Fluor® 594 Goat Anti-Rabbit secondary ([ab150080](#)) at 1/1000 dilution at RT for 45 min. Nucleus were visualized using DAPI.

Negative control: WEHI-231 (PMID: 2457584)

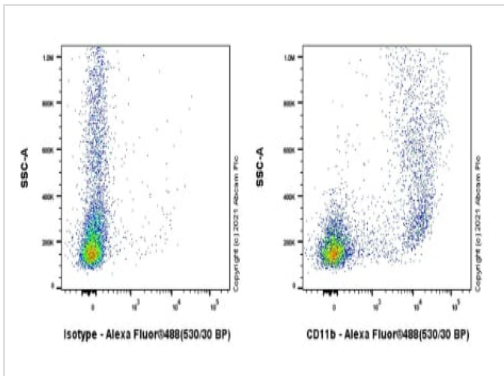


Flow Cytometry - Anti-CD11b antibody [M1/70] - BSA and Azide free (ab237965)

This data was developed using the same antibody clone in a different buffer formulation containing PBS and sodium azide (**ab8878**).

Flow Cytometry analysis of Human peripheral blood mononuclear cell (PBMC) cells labelling CD11b with AB8878 at a 1/10,000 dilution (0.01 µg) (right) compared to Rat monoclonal IgG - Isotype Control (right). Goat F(ab)₂ Anti-Rat IgG Fc (Alexa Fluor® 488, **ab150161**) at 1/2000 dilution was used as the secondary antibody.

Gated on viable cells.



Flow Cytometry - Anti-CD11b antibody [M1/70] - BSA and Azide free (ab237965)

This data was developed using the same antibody clone in a different buffer formulation containing PBS and sodium azide (**ab8878**).

Flow Cytometry analysis of Mouse peripheral blood mononuclear cell (PBMC) cells labelling CD11b with AB8878 at a 1/10,000 dilution (0.01 µg) (right) compared to Rat monoclonal IgG - Isotype Control (right). Goat F(ab)₂ Anti-Rat IgG Fc (Alexa Fluor® 488, **ab150161**) at 1/2000 dilution was used as the secondary antibody.

Gated on viable cells.

Please note: All products are "FOR RESEARCH USE ONLY. NOT FOR USE IN DIAGNOSTIC PROCEDURES"

Our Abpromise to you: Quality guaranteed and expert technical support

- Replacement or refund for products not performing as stated on the datasheet
- Valid for 12 months from date of delivery
- Response to your inquiry within 24 hours
- We provide support in Chinese, English, French, German, Japanese and Spanish
- Extensive multi-media technical resources to help you
- We investigate all quality concerns to ensure our products perform to the highest standards

If the product does not perform as described on this datasheet, we will offer a refund or replacement. For full details of the Abpromise, please visit <https://www.abcam.com/abpromise> or contact our technical team.

Terms and conditions

- Guarantee only valid for products bought direct from Abcam or one of our authorized distributors