

## Product datasheet

### Anti-CD13 antibody [WM15] ab7417

KO **VALIDATED** Recombinant

★★★★★ [7 Abreviews](#) [20 References](#) [4 Images](#)

#### Overview

<b>Product name</b>	Anti-CD13 antibody [WM15]
<b>Description</b>	Mouse monoclonal [WM15] to CD13
<b>Host species</b>	Mouse
<b>Tested applications</b>	<b>Suitable for:</b> Flow Cyt, ICC/IF
<b>Species reactivity</b>	<b>Reacts with:</b> Human
<b>Immunogen</b>	Tissue, cells or virus corresponding to Human CD13. Human AML cells
<b>Epitope</b>	The antibody recognizes an extracellular epitope.
<b>Positive control</b>	ICC: THP-1, PANC-1 and A375 cells. Flow Cyt: Human peripheral blood leukocytes; Human Fibrosarcoma cells.
<b>General notes</b>	<p>This product has switched from a hybridoma to recombinant production method on 08th March 2021.</p> <p>This product is a recombinant monoclonal antibody, which offers several advantages including:</p> <ul style="list-style-type: none"> <li>- High batch-to-batch consistency and reproducibility</li> <li>- Improved sensitivity and specificity</li> <li>- Long-term security of supply</li> <li>- Animal-free production</li> </ul> <p>For more information <a href="#">see here</a>.</p>

#### Properties

<b>Form</b>	Liquid
<b>Storage instructions</b>	Shipped at 4°C. Store at +4°C short term (1-2 weeks). Upon delivery aliquot. Store at -20°C long term. Avoid freeze / thaw cycle.
<b>Storage buffer</b>	<p>pH: 7.40</p> <p>Preservative: 0.01% Sodium azide</p> <p>Constituents: 59% PBS, 40% Glycerol (glycerin, glycerine), 0.05% BSA</p>
<b>Purity</b>	Protein A purified
<b>Purification notes</b>	Purified by protein-A affinity chromatography > 95% pure (by SDS-PAGE).
<b>Clonality</b>	Monoclonal

Clone number	WM15
Myeloma	NS1
Isotype	IgG1

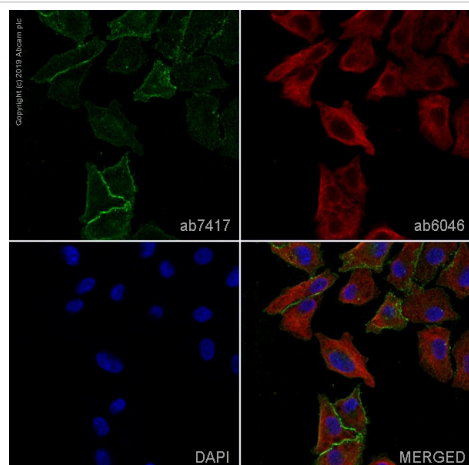
## Applications

**The Abpromise guarantee** Our **Abpromise guarantee** covers the use of ab7417 in the following tested applications. The application notes include recommended starting dilutions; optimal dilutions/concentrations should be determined by the end user.

Application	Abreviews	Notes
Flow Cyt	★★★★★ (2)	Use a concentration of 1 µg/ml. <b>ab170190</b> - Mouse monoclonal IgG1, is suitable for use as an isotype control with this antibody.
ICC/IF	★★★★★ (1)	Use a concentration of 1 µg/ml. This product also produced a positive signal in A375 when fixed with 4% formaldehyde (10min)

## Target

<b>Function</b>	Broad specificity aminopeptidase. Plays a role in the final digestion of peptides generated from hydrolysis of proteins by gastric and pancreatic proteases. May play a critical role in the pathogenesis of cholesterol gallstone disease. May be involved in the metabolism of regulatory peptides of diverse cell types including small intestinal and tubular epithelial cells, macrophages, granulocytes and synaptic membranes from the CNS. Found to cleave antigen peptides bound to major histocompatibility complex class II molecules of presenting cells and to degrade neurotransmitters at synaptic junctions. Is also implicated as a regulator of IL-8 bioavailability in the endometrium, and therefore may contribute to the regulation of angiogenesis. Is used as a marker for acute myeloid leukemia and plays a role in tumor invasion. In case of human coronavirus 229E (HCoV-229E) infection, serves as receptor for HCoV-229E spike glycoprotein. Mediates as well human cytomegalovirus (HCMV) infection.
<b>Tissue specificity</b>	Expressed in epithelial cells of the kidney, intestine, and respiratory tract; granulocytes, monocytes, fibroblasts, endothelial cells, cerebral pericytes at the blood-brain barrier, synaptic membranes of cells in the CNS. Also expressed in endometrial stromal cells, but not in the endometrial glandular cells. Found in the vasculature of tissues that undergo angiogenesis and in malignant gliomas and lymph node metastases from multiple tumor types but not in blood vessels of normal tissues. A soluble form has been found in plasma. It is found to be elevated in plasma and effusions of cancer patients.
<b>Sequence similarities</b>	Belongs to the peptidase M1 family.
<b>Domain</b>	Amino acids 260-353 are essential to mediate susceptibility to infection with HCoV-229E (in porcine/human chimeric studies) and more specifically amino acids 288-295 (mutagenesis studies).
<b>Post-translational modifications</b>	Sulfated. N- and O-glycosylated. May undergo proteolysis and give rise to a soluble form.
<b>Cellular localization</b>	Cell membrane. Cytoplasm > cytosol. A soluble form has also been detected.

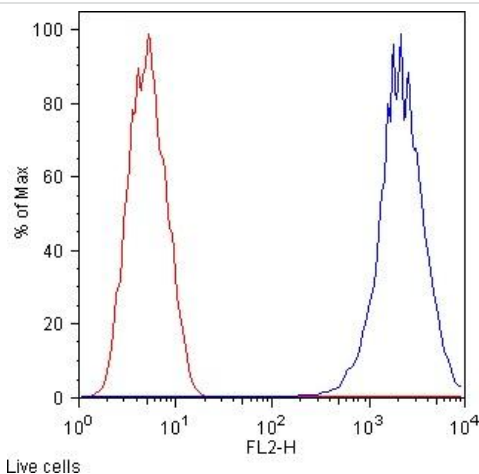


Immunocytochemistry/ Immunofluorescence - Anti-CD13 antibody [WM15] (ab7417)

ab7417 staining CD13 in A375 cells. The cells were fixed with 100% methanol (5 min), permeabilized with 0.1% PBS-Tween for 5 minutes and then blocked with 1% BSA/10% normal goat serum/0.3M glycine in 0.1%PBS-Tween for 1h. The cells were then incubated overnight at 4°C with ab7417 at 1µg/ml and **ab6046**, Rabbit polyclonal to beta Tubulin - Loading Control. Cells were then incubated with **ab150117**, Goat polyclonal Secondary Antibody to Mouse IgG H&L (Alexa Fluor® 488) preadsorbed at 1/1000 dilution (shown in green) and **ab150080**, Goat polyclonal Secondary Antibody to Rabbit IgG - H&L (Alexa Fluor®; 594) at 1/1000 dilution (shown in pseudocolour red). Nuclear DNA was labelled with DAPI (shown in blue).

Also suitable in cells fixed with 4% paraformaldehyde (10 min).

Image was acquired with a high-content analyser (Operetta CLS, Perkin Elmer) and a maximum intensity projection of confocal sections is shown

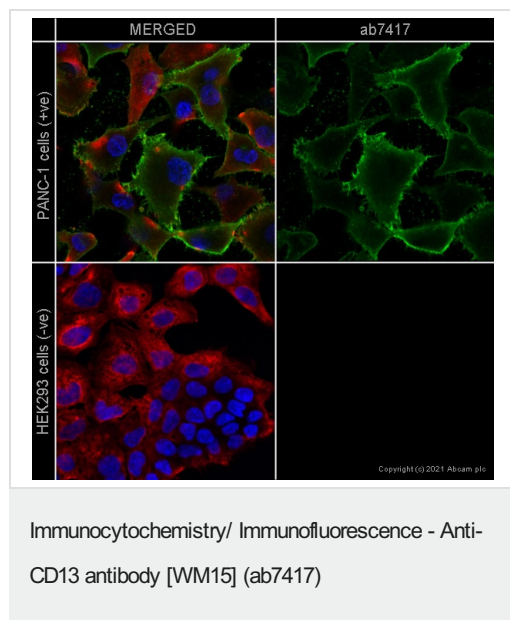


Flow Cytometry - Anti-CD13 antibody [WM15] (ab7417)

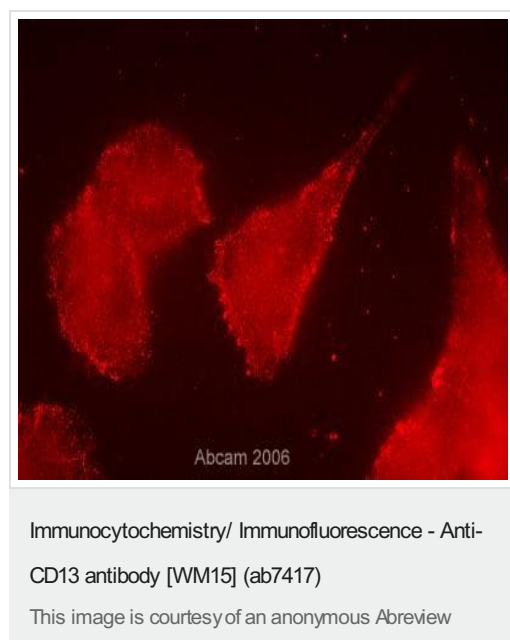
This image is courtesy of an anonymous Abreview

This image was generated from the hybridoma version of the product.

Ab7417 staining CD13 in Human Fibrosarcoma cells by flow cytometry. Cells were fixed with paraformaldehyde. The sample was incubated with primary antibody at 10µg/ml in PBS for 1 hour at 20°C. An Allophycocyanin (APC) conjugated anti-mouse monoclonal was used as a secondary antibody at 5µg/ml. Secondary antibody only (red). Ab7417 and secondary antibody (blue).



ab7417 staining CD13 in PANC-1 cells (top panel - positive control) and HEK-293 cells (bottom panel - negative control). The cells were fixed with 4% paraformaldehyde (10 min) then permeabilized with 0.1% PBS-Tween for 5 minutes and then blocked with 1% BSA/10% normal goat serum/0.3M glycine in 0.1% PBS-Tween for 1h. The cells were then incubated with ab7417 at 0.5µg/ml concentration and [ab6046](#) (Rabbit polyclonal to beta Tubulin) at 1/1000 dilution overnight at 4°C followed by a further incubation at room temperature for 1h with a goat secondary antibody to mouse IgG (Alexa Fluor® 488) ([ab150117](#)) at 2 µg/ml (shown in green) and a goat secondary antibody to rabbit IgG (Alexa Fluor® 594) ([ab150080](#)) at 2 µg/ml (shown in red). Nuclear DNA was labelled in blue with DAPI. Image was taken with a confocal microscope (Leica-Microsystems TCS SP8).



This image was generated from the hybridoma version of the product.

Ab7417 staining CD13 in HT1080 cells by ICC/IF (Immunocytochemistry/Immunofluorescence). Cells were fixed with 4% paraformaldehyde and permeabilized with 0.1% Triton X-100. Samples were incubated with primary antibody at 10µg/ml for 1 hour. A Texas Red Goat Anti-mouse polyclonal was used as the secondary antibody.

**Please note:** All products are "FOR RESEARCH USE ONLY. NOT FOR USE IN DIAGNOSTIC PROCEDURES"

**Our Abpromise to you: Quality guaranteed and expert technical support**

- Replacement or refund for products not performing as stated on the datasheet
- Valid for 12 months from date of delivery
- Response to your inquiry within 24 hours
- We provide support in Chinese, English, French, German, Japanese and Spanish
- Extensive multi-media technical resources to help you
- We investigate all quality concerns to ensure our products perform to the highest standards

If the product does not perform as described on this datasheet, we will offer a refund or replacement. For full details of the Abpromise, please visit <https://www.abcam.com/abpromise> or contact our technical team.

#### **Terms and conditions**

---

- Guarantee only valid for products bought direct from Abcam or one of our authorized distributors